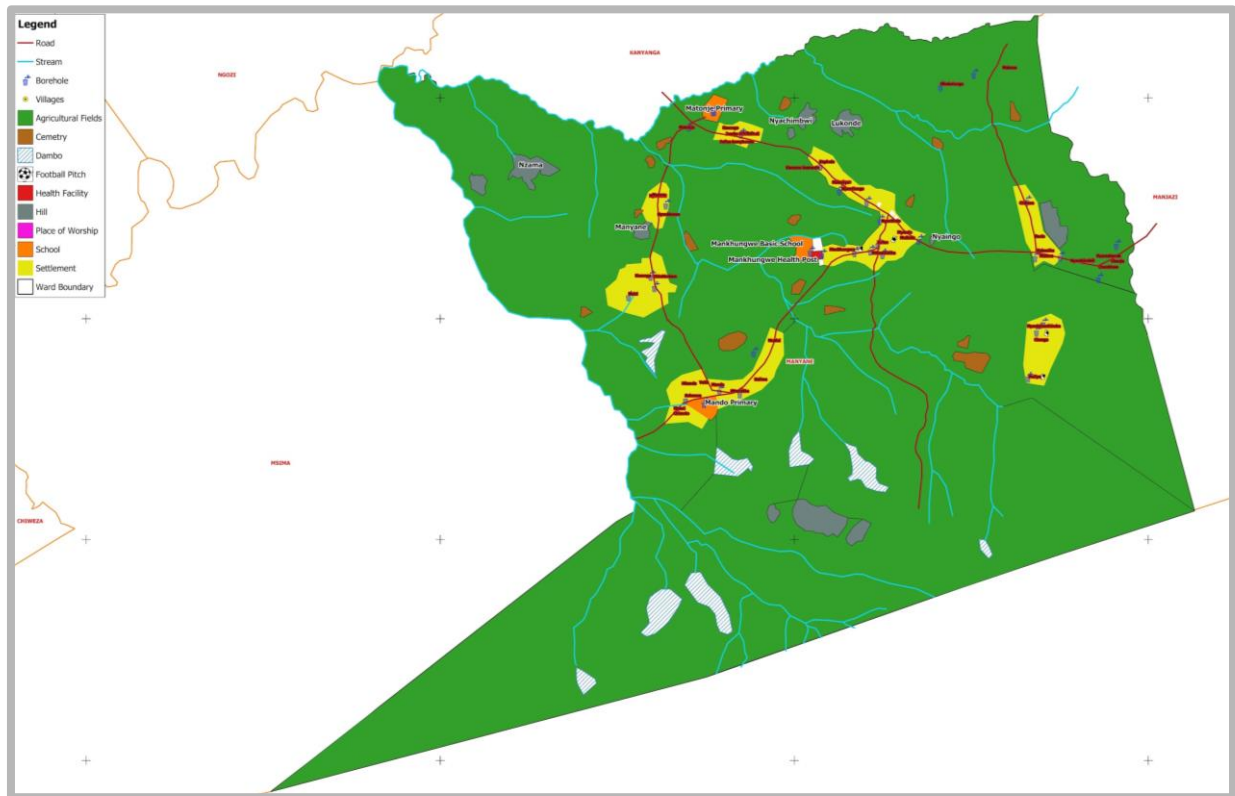




MANYANE WARD – PETAUKE DISTRICT PARTICIPATORY LAND USE PLAN (PLUP)



Prepared by: Land Alliance Consortium (TSP) in Collaboration with PETAUKE/LUSANGAZI DMT

Date: 25th August, 2022

Preface

This Participatory Land Use Plan (**PLUP**) for Manyane Ward is a document that has been developed with a view to managing and mitigating unsustainable natural resource use. The aim of this document is to help communities in making sound decisions pertaining to land uses. This PLUP process has been supported by the Zambia Integrated Forests and Landscape Project (**ZIFLP**), an initiative of the Government of the Republic of Zambia, with funding support from World Bank through the Bio-Carbon Fund, Global Environmental Facility (**GEF**) and International Development Association (**IDA**).

PLUP activity falls under Component 1: **Enabling Environment**. This first component is meant to create conditions that will allow the livelihood investments of Component 2 (**Livelihood and Low-Carbon Investments**) to be successfully implemented and that will prepare Zambia for emission reduction purchases. This component includes support for two sub-components under which PLUP falls. These are:

- a. District and Local Level Planning, which supports Integrated District Development.
- b. Local Planning, including land use and action planning through participatory processes.

The process for the creation of this PLUP was participatory in nature taking into account Social Biodiversity Impact Assessment (**SBIA**), and various stakeholders such as Her Royal Highness Chieftainess Mwanjawanthu of Mwanjawanthu Chiefdom, Petauke District Multi-Sectoral Teams (**DMTs**), Department of Physical Planning, Manyane Ward community Members and ZIFLP team were consulted and engaged and were fully involved at every stage of the process. Thus, this PLUP will help guide Manyane Ward residents in implementing sustainable and environmentally friendly land use practices in their ward, and also help in addressing the key issues identified, which have so far led to the unsustainable resource usage. This PLUP will help residents find alternative livelihood sources which will make them refrain from unsustainable land use practices such as unsustainable agriculture expansion, unplanned human settlement, environmental degradation and deforestation. This will help in the realisation of ZIFLP vision, which is to improve rural livelihoods in Eastern Province by reducing Deforestation and Forest Degradation using low emission pathways through local participation by 2030.

It is further hoped that the local people in the community will appreciate the benefits of having the Land Use Plan (**LUP**), bearing in mind that land is a scarce resource with competing uses which are mutually exclusive. Additionally, population growth, erosion, effects of climate change and other factors have contributed to the increasing scarcity of fertile land in rural areas despite people deriving their livelihoods from there. Thus, this PLUP is a way of balancing up competing and, in some cases, conflicting land uses.

Council Secretary
Petauke District Council

District
Commissioner
Petauke District

HRH Chieftainess Mwanjwanthu
Mwanjwanthu Chiefdom

Table of Contents

Preface	i
Table of Contents	iii
Table of Figures	vii
List of Tables	viii
Acknowledgements	ix
Acronyms and Abbreviations	x
1. Introduction	1
1.1 Background	2
1.3 Legal Context	3
2. Approach and Methodology	3
2.1 Stages of PLUP Activity	6
3. Characteristics of the Management Area	8
3.1 Location of Manyane Ward	8
3.2 Climatic Conditions	9
3.2.1 Temperature	9
3.2.2 Rainfall	10
3.2.3 Ecological Zone	10
3.2.4 Soil Types	11
3.3 Socio-Economic Environment	12
3.3.1 Population Projection	13
3.3.2 Social Facilities	13
3.3 Source of Livelihood	14
3.4 Livelihood Security	15

3.5 Livelihood and Natural Resource Utilisation	15
3.6 Livelihood Constraints and opportunities	16
3.7 Biodiversity Hotspots	17
3.7.1 Streams and Dams	17
3.7.2 Forests	18
3.8 Ecosystem Function	19
4. Current Land Use Patterns	20
4.1 Overall Land Use	20
4.2 Land Use Suitability Analysis	20
4.2.1 Soil Type Agricultural Suitability Analysis	21
4.3 Land Resource and Administrative Boundaries	22
4.4 Current Land Uses	22
4.5 Land Use and Agriculture	23
4.6 Land Use and Forest	24
4.7 Land Use and Wildlife	25
4.8 Land Use and Mining	26
4.9 Land Use and Tourism	26
4.10 Land Use and Physical Development	26
5. Community Participation	27
5.1 Community Engagement Process	27
5.2 Agreed Local Rules for Land Use and Resource Management	30
5.3 Problem Identification	30
6. Core Issues Affecting Land Use and the Environment	31
6.1 Lack of Water Sources	32

6.2 Soil Degradation	33
6.3 Poor State of Roads and Related Infrastructure	34
6.4 Long Distances to Schools	34
6.5 Inadequate Health Facilities	36
6.6 Inadequate Telecommunications Facilities	37
7. Land Use Planning-Zoning, Validation and Governance Rules	39
7.1 Mankhungwe Community Meeting	39
7.2 Sanjama Community Meeting	41
7.3 Chizanda Community Meeting	42
7.4 Matonje Community Meeting	45
8. Framework of the PLUP and Environmental Management Plan	47
9. Implementation Strategy	49
9.1 Capital Investment Projects	52
10. Institutional Arrangement for Plan Implementation	52
11. Conclusion	53
12. Glossary	54
12. 1. Natural Resources	54
12. 1.1. Vegetation	54
12. 1.2 Soils	54
12. 1.3 Water	54
12. 2. Climate	55
12. 2.1 Rainfall	55
12. 3. Land Use Planning	55
12. 4. Participatory Land Use Planning	56

12. 5. Livelihood	56
13. References	57
Annex 1: Manyane Ward By-Laws on Land Use and Natural Resource Management	59
Annex 2: Meeting Attendance Registers	61
First Village Meetings	61
Validation Meetings	77

Table of Figures

Figure 1: Location Map	8
Figure 2: Monthly Temperature Conditions for Manyane Ward	9
Figure 3: Annual Rainfall Pattern for Manyane Ward	10
Figure 4: Agro-Ecological Zones	11
Figure 5: Manyane Soil Map	12
Figure 6: Spatial Distribution of Social Facilities in Manyane Ward	14
Figure 7: Biodiversity Hotspots	19
Figure 8: Manyane Ward Agricultural Suitability Analysis Map	21
Figure 9: Land Resource and Administration Boundaries	22
Figure 10: Current Land Uses	23
Figure 11: Land Use and Agriculture Map	24
Figure 12: Land Use and Forest	25
Figure 13: Land Use and Physical Development	27
Figure 14: Sample output of rapid village assessment activity	29
Figure 15: Distribution of Water Sources	33
Figure 16: Primary Education Facility Service Gap	35
Figure 17: Secondary Education Facility Service Gap	36
Figure 18: Health Facility Service Radius	37
Figure 19: Future Land Use Map for Mankhungwe Community Meeting	41
Figure 20: Future Land Use Map for Sanjama Community Meeting	42
Figure 21: Future Land Use Map for Chizanda Community Meeting	44
Figure 22: Future Land Use Map for Matonje Community Meeting	46

List of Tables

Table 1: Stages of PLUP Activity	7
Table 2: Monthly Temperature Conditions for Manyane Ward	9
Table 3: Manyane Ward Population	13
Table 4: Livelihood Constraints and Opportunities	17
Table 5: Land Use Reservation	20
Table 6: Problems Identified	31
Table 7: Attendance Statistics	39
Table 8: Land Reservations for Mankhungwe Community Meeting	40
Table 9: Land Reservation for Sanjama Community Meeting	42
Table 10: Land Reservations for Chizanda Community Meeting	43
Table 11: Land Reservations for Matonje Community Meeting	45
Table 12: Environmental Management Plan	48
Table 13: PLUP Implementation Plan	51
Table 14: Capital Investment Projects	52
Table 15: Offences and Penalties	60

Acknowledgements

We the Consortium of Land Alliance comprising of Chipata District Land Alliance, Petauke District Land Alliance and Zambia Land Alliance Nyimba would like to express our gratitude to the Republic of Zambia for sourcing funding from the World Bank for the Zambia Integrated Forest Landscape Project (**ZIFLP**) through the Acting Project Manager Mr Noel Muchimba, Department of Physical Planning, Ministry of Local Government through the Petauke/Lusangazi District Multi-Sectoral Teams (**DMTs**), Her Royal Highness Chieftainess Mwanjawanthu, Manyane Ward Development Committee and the community of Manyane Ward.

Acronyms and Abbreviations

CDF – Constituency Development Fund
CSA – Climate Smart Agriculture
DMT - District Multi-Sectoral Team
ECZ – Electoral Commission of Zambia
EP - Eastern Province
EMP - Environmental Management Plans
FPIC - Free Prior Informed Consent
GPS - Global Positioning System
ICT – Information and Communications Technology
IDP – Integrated Development Plan
JICA - Japanese International Corporation Agency
JIDP – Joint Integrated Development Plan
LAP - Local Area Plan
LULC - Land Use Land Cover
LUP - Land Use Planning
NDP - National Development Plan
NRM - Natural Resource Management
OCC - Objection, Correction and Confirmation
ODK - Open Data Kit
PAD - Project Appraisal Document
PLUP - Participatory Land Use Planning
URP - Urban and Regional Planning
WDC - Ward Development Committee
ZIFLP - Zambia Integrated Forest Landscape Project

1. INTRODUCTION

Participatory Land Use Planning (**PLUP**) is an interactive process in which local communities can discuss and determine how to manage the land and other natural resources in their locality. Land Use Planning (**LUP**) can be defined as a process in which land is allocated for different uses ranging from residential, commercial, agriculture, etc. (PLUP manual, 2019). PLUP is an important decision-making tool for Natural Resource Management because it helps in defining suitable land uses which best balance ecological, economic and social objectives, thereby preventing land use and social conflicts. Thus, PLUP is of great importance if natural resources are to be effectively managed.

Rural areas in Zambia are currently faced with challenges ranging from food insecurity, land conflicts, biodiversity protection while initiating economic growth, adapting to climate change as well as protecting people from natural disasters (JICA, 2011). Hence, PLUP is envisioned to be a great tool capable of mitigating the above challenges by focusing on conducting discussions with relevant stakeholders on future land and resource use as well as management by allocating specific areas for different human activities.

Thus land use allocation is important, owing to the fact that land is a scarce resource with a fixed supply despite demand increasing on a daily basis (thereby bringing about land related conflicts). Therefore, this PLUP aims at guiding and helping in tackling land-related conflicts as well as other natural resource issues in their early stages by facilitating consensual negotiations and eventual regulations on land uses by all interested parties.

The rationale and overall objective of conducting Participatory Land Use Planning on customary land is to consolidate information on the current status of land uses and land information within an area. The information gathered will subsequently inform land use options that are sustainable, environmentally compatible, socially desirable and economically sound. Further, this exercise helps in bringing out social and environmental issues affecting the communities in the project areas so as to design appropriate interventions to mitigate those effects.

1.1 Background

The Zambia Integrated Forest Landscape Project (**ZIFLP**) embarked on supporting the implementation of Participatory Land Use Planning (**PLUP**) in districts of Eastern Province (**EP**), focusing on community land use mapping and planning. This was the basis for the identification of primary Sub-District level activities, including issues of identification, prioritisation and sub-project identification (PLUP Manual, 2019).

ZIFLP took into consideration and followed the present government direction on land use aimed at optimising the use of land, helping with resolution of conflicts which arise between competing land uses and needs of various interest groups, choosing sustainable options that best meet identified needs, rehabilitating and conserving natural resources, supporting the general development process and raising awareness concerning environmental problems among the populations and authorities (**ZIFLP-PAD**).

Additionally, this PLUP consolidated information on the current status of land use and land information within a project area, which provided information on land use options that are sustainable, socially and environmentally compatible, socially desirable and economically sound. The PLUP initiative is based on the current social, economic and environmental challenges and opportunities facing Zambia's customary areas.

Besides, Chiefs have a high level of autonomy in terms of land management in their chiefdoms, while at the same time depend on government for a range of services such as schools, clinics, etc. The PLUP development process recognizes the fact that Zambia's rural landscape is vast and viable for various investments. Thus, rural landscapes have the potential to provide multiple revenue sources ranging from small-scale farming, wildlife management and game ranching, forest timber extraction, tourism, and mining. It is important to note that there are a number of land uses competing with each other hence the need for a land use plan to serve as a guide for the use and management of land.

1.3 Legal Context

The Manyane Ward PLUP has been developed in accordance with the provisions of the Urban and Regional Planning (**URP**) Act No. 3 of 2015 of the Laws of Zambia. The URP Act is the main legislation that guides planning and related activities in the country. The Act not only provides for the preparation of Integrated Development Plans (**IDPs**) for the development of each district but also provides for the preparation of Local Area Plans (**LAPs**) which are actually Land Use Plans for sections of a settlement, sub-areas, sub-districts or wards within a Local Authority's area. Areas under Traditional Authorities are governed by Section 25 of the Urban and Regional Planning Act No. 3 of 2015 of the Laws of Zambia.

Further, it provides guidance on the development of areas within land falling under customary tenure with the provision of developing planning agreements between traditional authority and relevant government authorities. However, there are other laws and policies that govern Land Use Planning in Zambia which were adhered to during the preparation of Manyane Ward PLUP such as the Mines and Minerals Act No. 11 of 2015, Villages Act of 1972, Chiefs Act, Cap. 287, Agriculture Act, National Decentralisation Policy (**NDP**) of 2013, Forest Act No. 4 of 2015 and Zambia Wildlife Act No. 14 of 2015

2. APPROACH AND METHODOLOGY

The Participatory Land Use Planning in Manyane Ward adopted the USAID Land Use Planning approach, which is a combination of primary and secondary data collection. The secondary data collection method involved reviewing various documents on land use planning and land uses held by various government departments and other cooperating partners. The primary data was collected through village meetings and field activities, through the involvement of traditional leaders, community members and key informants across a range of government institutions and non-state actors. Facilitation of this PLUP was done in the local language in order to contextualise the PLUP to the locality. The whole process was participatory as it involved all stakeholders who were either affected or had interest in the landscape of the project site.

The participatory approach was used in the development of the Manyane Ward PLUP, where various relevant stakeholders were fully involved in the process. Planning was done with the community stakeholders together with their leaders (indunas and headpersons) in consultation with Chieftainess Mwanjawanthu. PLUP sensitization meetings were held with the Indunas, Headpersons, Manyane Ward Development Committee and community members in order to collect socio-economic and environmental data on livelihood sources and security. These PLUP sensitization meetings were held in **four (4)** clustered focus group village meetings, namely: **Mankhungwe, Sanjama, Chizanda and Matonje**. Community members in all the **four (4)** clustered meetings took a leading role in developing sketch maps, problem analysis through pair-wise ranking, identifying shared resources and validation of the maps.

The spatial and attribute data used were collected using mobile-based **Open Data Kit (ODK Collect)** application forms, Android tablets and **GLO Garmins** while **QGIS 3.8.1**, **Google Earth Engine** and **ArcGIS 10.5** were used for data analysis.

The data captured is uploaded to the cloud-based server using any wireless connectivity so that data can be uploaded anywhere without necessarily coming to the office, especially when the field teams are camping.

The tablets have stored MB tiles (orthophoto images) with base maps for each district and the Community Facilitators whilst in the field can map any village including all shared communal resources and using the ODK application they can gather data on number of attendees disaggregated as male and female of any village or ward. Any hand-drawn land use maps by the communities are captured and uploaded to the cloud server so that the GIS team at the office can digitise the maps and produce land use maps. Each tablet in order to accurately pick the polygon points is connected to a handheld Garmin Glo Geographical Positioning System (**GPS**). Each community facilitator ensures that the polygon points are repeatedly captured/deleted until the point recorded is shown to be reasonably in the right location relative to the ortho-photo image.

Although there is capability to manually record the polygon points against the image, or to move captured GPS points, the GIS team may not do so until they meet the community facilitator who was in the field to clarify any captured polygon points issues.

2.1 Stages of PLUP Activity

No.	Activity	Objective	Strategy	Output	Target	Indicator
1	Village Identification (Rapid Village Assessments)	Know the total number of villages in the ward by picking points of interest	Physical Data Collection in all villages	45 villages were identified	All Villages within Manyane Ward boundary	Villages falling within the Ward boundaries were captured
2	Sensitization of Indunas and Head Persons	Sensitise Indunas and Head Persons to fully accept PLUP	Indunas and Head Persons meeting	9 Indunas from Mwanjawanthu Chiefdom were sensitised.	All the Indunas in the Ward	Number of Indunas and Head Persons sensitised in the Chiefdom of Mwanjawanthu.
3	Community Sensitization	Sensitise communities on PLUP	Community meetings	One (1) Community Meeting for each of the 4 Village Clusters.	Community members in all the 4 Village Clusters	235 community representatives sensitised across the Ward, disaggregated as 91 men and 144 women
4	Shared Resource Mapping	Collect geographical locations of the resources present in the community	Physical Spatial data collection	17 Shared Resource Maps were produced	Manyane Ward	Shared Resource Mapping exercise completed in Manyane Ward
5	Manyane Ward Resource Map validation	Show the current shared resources, land uses and have the communities confirm the boundaries	Community engagement meetings for validation purposes.	Objections Corrections and Confirmation (OCC) done for the shared resource map in Manyane Ward.	Objections Corrections and Confirmation (OCC) done at the Palace and in all the village clusters	Shared Resource Map validated by the Chief and community

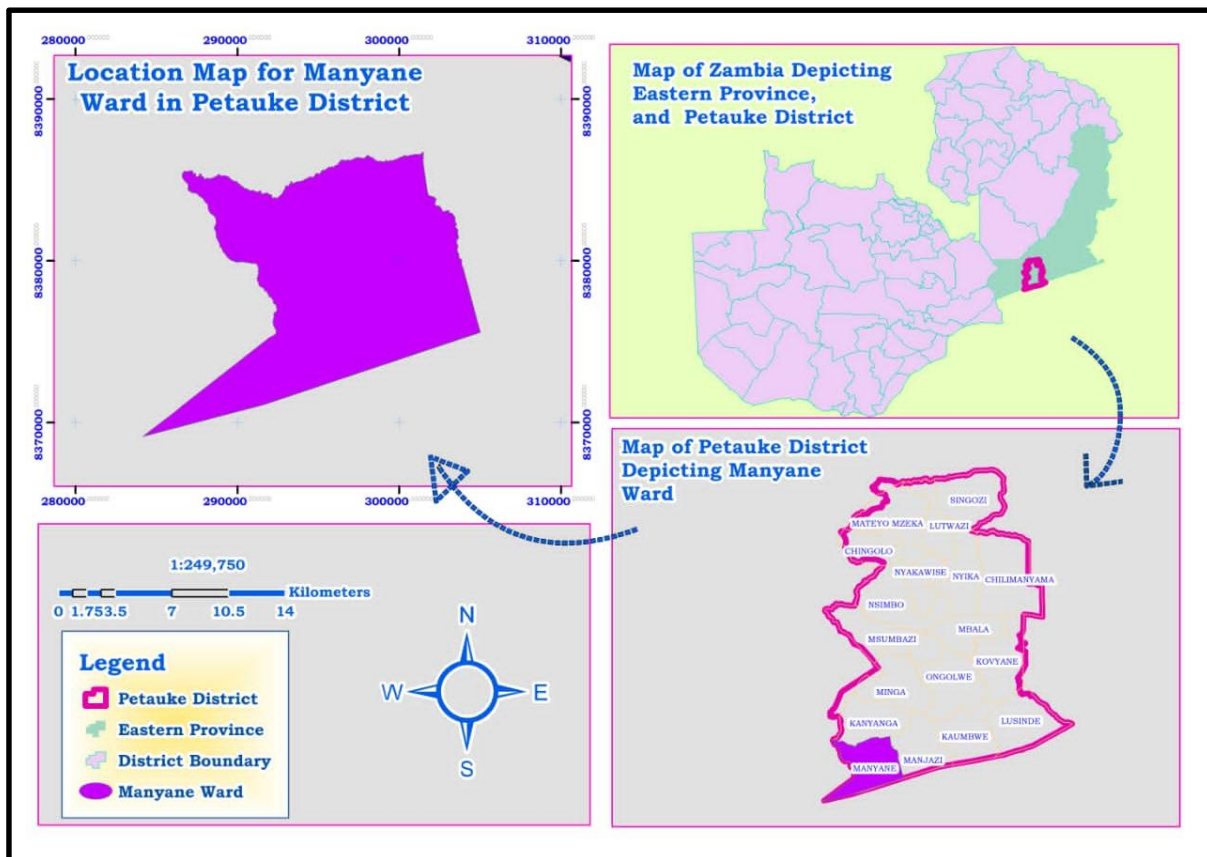
						representatives in the ward.
6	Future land use planning and Formulation of By-Laws	Develop maps of how communities envisage to sustainably use their natural resources.	Community meetings	Future Land Use Plan developed and By-Laws formulated	The whole Manyane Ward	Future Land Use Plan and By-Laws done
7	PLUP approval	Have the plan approved by all relevant authorities in order to be implemented	Submit PLUP copies to both traditional and local authorities	PLUP approved	Manyane Ward PLUP	PLUP approved by the Chief and Local Authority

Table 1: Stages of PLUP Activity

3. CHARACTERISTICS OF THE MANAGEMENT AREA

3.1 Location of Manyane Ward

Manyane Ward is in Petauke District, which has two (2) constituencies, namely: **Kaumbwe** and **Petauke Central**. **Kaumbwe Constituency**, where Manyane Ward falls, has **five (5)** wards, namely: **Kaumbwe, Lusinde, Manjazi, Manyane** and **Kanyanga**. Manyane Ward falls under Petauke District, which has a surface area of **3,701 km²**, and lies between **13°30'** latitude and **14°45'** longitude, **31° west** and **32° east**. Petauke District shares boundaries with Lusangazi in the north and with Sinda and Mambwe in the north-east, as well as Serenje in Central Province in the north-west. Manyane Ward shares boundaries with Kanyanga and Ngozi Wards in the North, Msima Ward in the West and Manjazi Ward in the East. The map below shows the location of Manyane Ward:



3.2 Climatic Conditions

Manyane Ward is characterised by a **Tropical Savanna** climate which is associated with the tropical wet and dry climate. The summers are much rainier than the winters in Manyane, with an average annual temperature of **23.4°C** and annual rainfall of **1,051 mm**.

3.2.1 Temperature

The temperatures are highest, on average, in October, at around **27.7°C** and lowest in July, with temperature recording of around **13.4°C**. Table 2 and figure 2 below show average temperatures for Manyane Ward:

	Jan	Feb	Mar	April	May	June	July	Aug	Sept	Oct	Nov	Dec
Ave. Temp (°C)	23.4	23.3	22.9	22.1	21.0	19.6	19.5	22.6	25.9	27.7	26.8	26.4
Min. Temp (°C)	19.2	18.8	18.1	16.8	15.2	13.6	13.4	15.8	18.7	20.9	20.9	20.1
Max. Temp (°C)	27.6	27.7	27.6	27.3	26.8	25.5	25.6	29.3	33.0	34.5	32.7	32.7

Table 2: Monthly Temperature Conditions for Manyane Ward

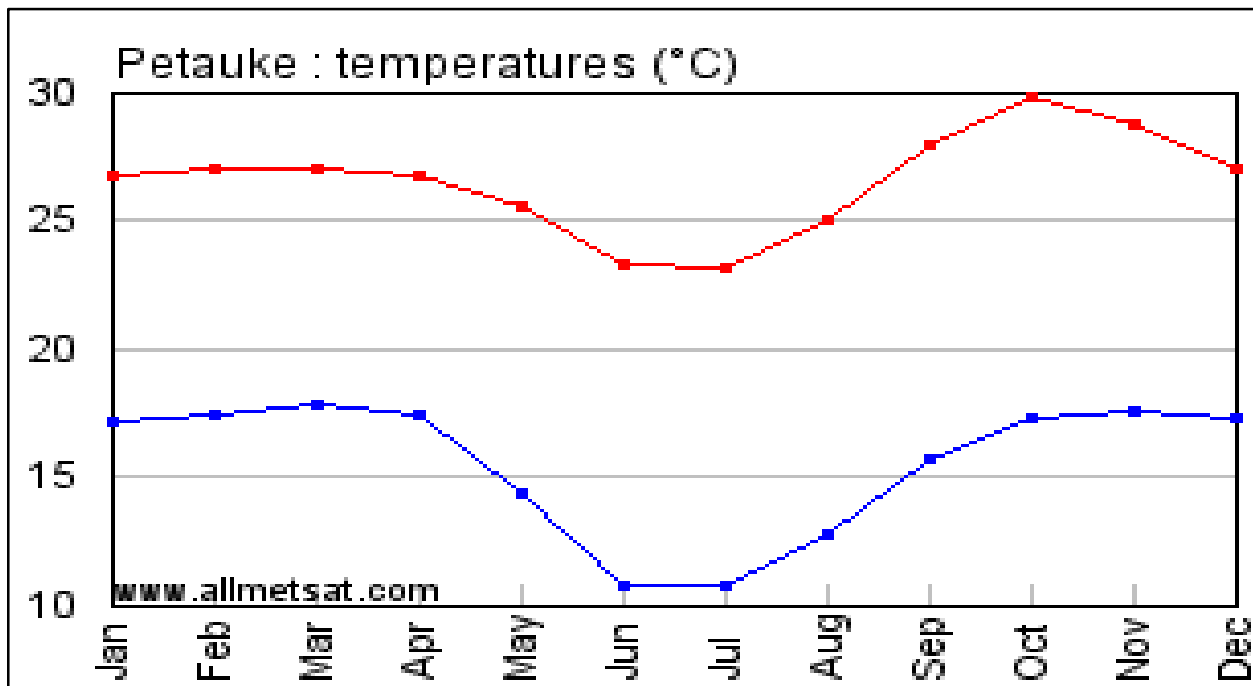


Figure 2: Monthly Temperature Conditions for Manyane Ward

3.2.2 Rainfall

Manyane Ward receives a total annual rainfall of about **1,051** mm. There is high rainfall recorded during the wet season from November to February with average rainfall of between **91-298** mm. The variation in the precipitation between the driest and wettest months is **150** mm. Figure 3 below shows rainfall patterns for Manyane Ward:

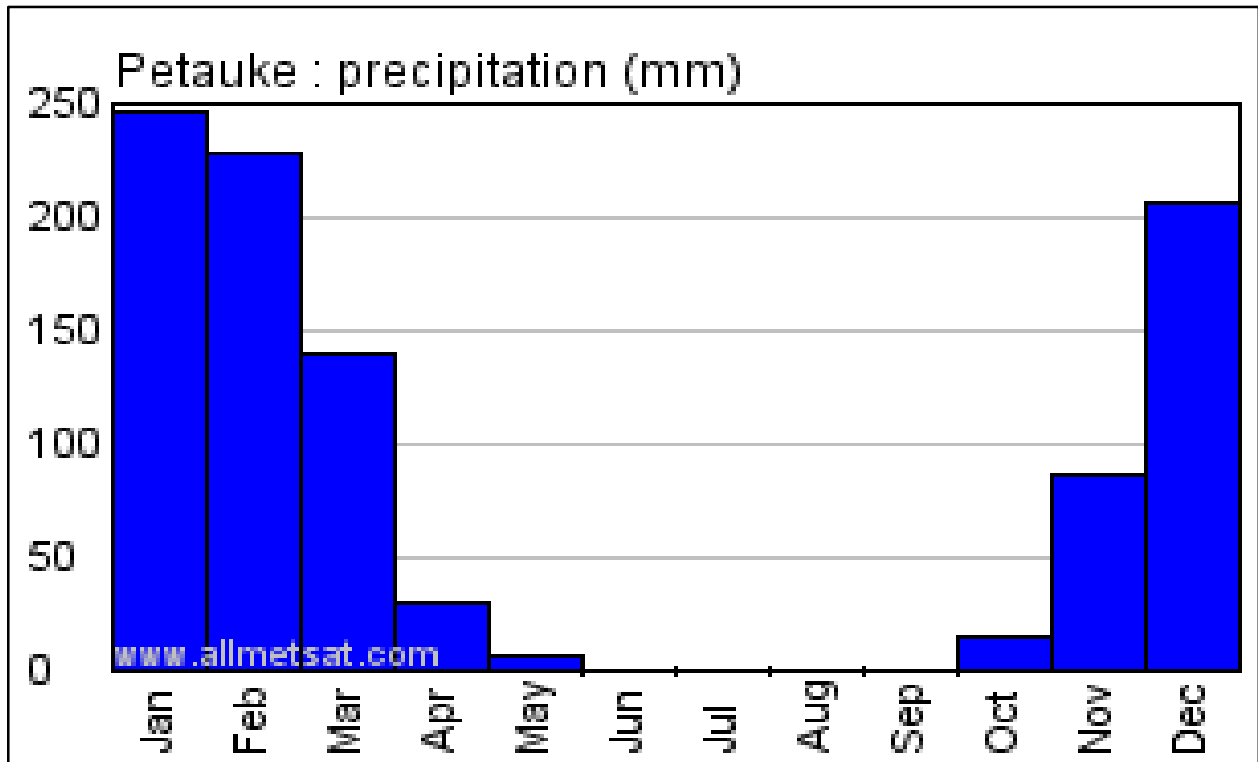


Figure 3: Annual Rainfall Pattern for Manyane Ward

3.2.3 Ecological Zone

Zambia, as a country, is divided into three main Ecological Zones, which are: **Zone I**, **Zone II** and **Zone III**. Petauke District is characterised by both the **I** and **Ila** Ecological Zones. Manyane Ward, being located in Petauke District, falls under the **Ila** Ecological Zone, which is characterised by annual rainfall of between **800-1000** mm, and a growing season of **100-140** days. This Ecological Zone supports the growth of medium and late-maturity crop varieties such as maize, soya beans, groundnuts and other leguminous plants. The figure below shows the different Ecological Zones of Zambia:

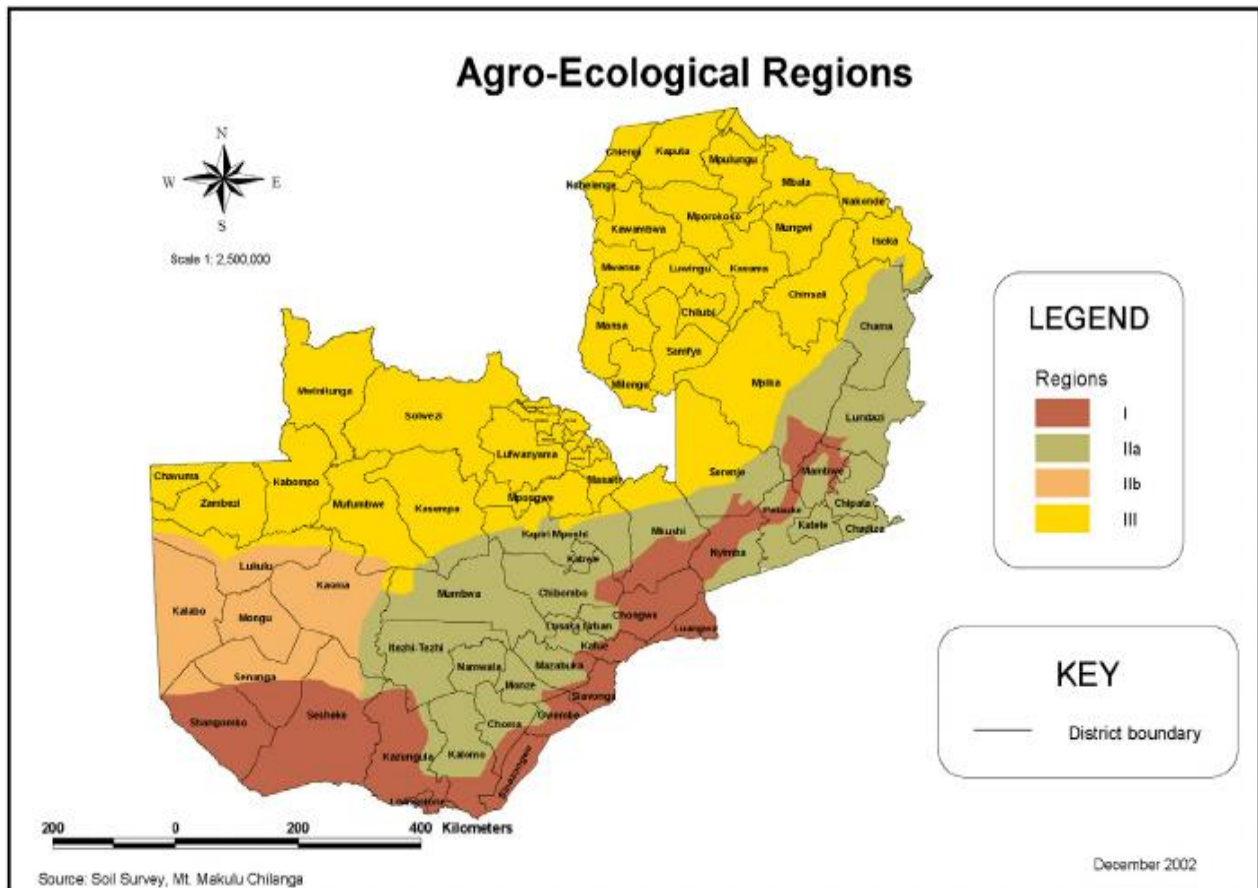


Figure 4: Agro-Ecological Zones

3.2.4 Soil Types

Petauke District is covered by **3** soil zones, namely: **Acrisol**, **Luvisol** and **Lithosol** Soil Zones. Manyane Ward is covered by one Soil Zone, i.e. **Acrisol** Soil Zone. The figure below shows a map of Manyane Soil Type Cover:

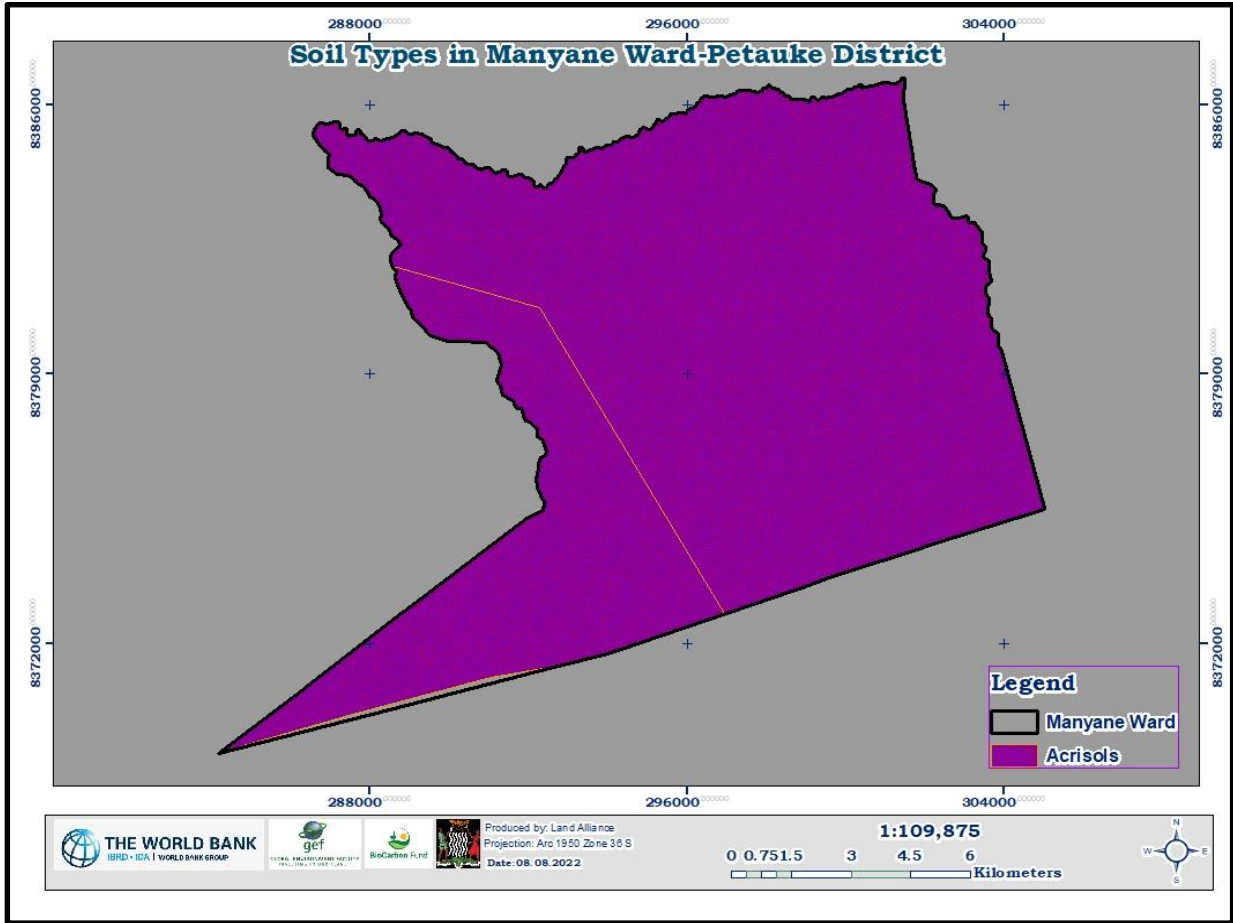


Figure 5: Manyane Soil Map

3.3 Socio-Economic Environment

Manyane Ward covers a total area of **18,120.1** hectares. Settlements in the ward are dispersed with poor road networks, especially during the rainy season, as the areas become inaccessible because streams flood and there are no bridges/culverts (Petauke/Lusangazi JIDP, 2021). Based on the village geo points collected, the ward has a total of **45** villages and based on the 2017 Census of Population, Manyane Ward has an estimated total population of **18,983** (CSO, 2017) as shown in the table below:

POPULATION			
MANYANE	Male	Female	Total
	9,340	9,643	18,983
Source: Petauke/Lusangazi JIDP, 2021			

Table 3: Manyane Ward Population

3.3.1 Population Projection

For the purposes of projecting future services and land use needs, the population forecast was based on the national population projections (adjusted to reflect the population of Kasenengwa District at **2.8%** growth rate as per 2017 Zambia Census projection). On this basis, the population of Manyane Ward is projected to increase to **21,200** and **27,182** in 2021 and 2030 respectively (Petauke/Lusangazi JIDP, 2021).

This projected increase in population will not only require land for development of infrastructure and other services but will also increase pressure on ecologically sensitive areas such as forests and hills that serve as catchment areas as well as water recharge areas. This entails that more land will be opened up for agricultural purposes, which will potentially lead to forest degradation and loss of biodiversity, consequently contributing to severe climate change and its related effects. However, the impact of anticipated increase in agricultural activities on land can be managed through the promotion and adoption of Climate Smart Agriculture (**CSA**) practices, aimed at reducing agriculture land expansion while increasing crop yields.

3.3.2 Social Facilities

Manyane Ward currently has **six (6)** schools classified as follows:

- **Five (5)** primary schools, namely: **Mankungwe, Mando, Sanjama** and **Matonje**
- **One (1)** Community school, namely: **Pilimbira Community School**
- **One (1)** Secondary School, namely: **Ng'ombe Nimatole (Matonge) Day Secondary School.**

There are **two (2)** health facilities in Manyane Ward (**Mankhungwe Health Post** and another unnamed Health Post).

Manyane also has the following facilities: 34 boreholes, 37 football fields, 29 places of worship and 17 graveyards.

The map below shows the spatial distribution of social facilities in Manyane Ward:

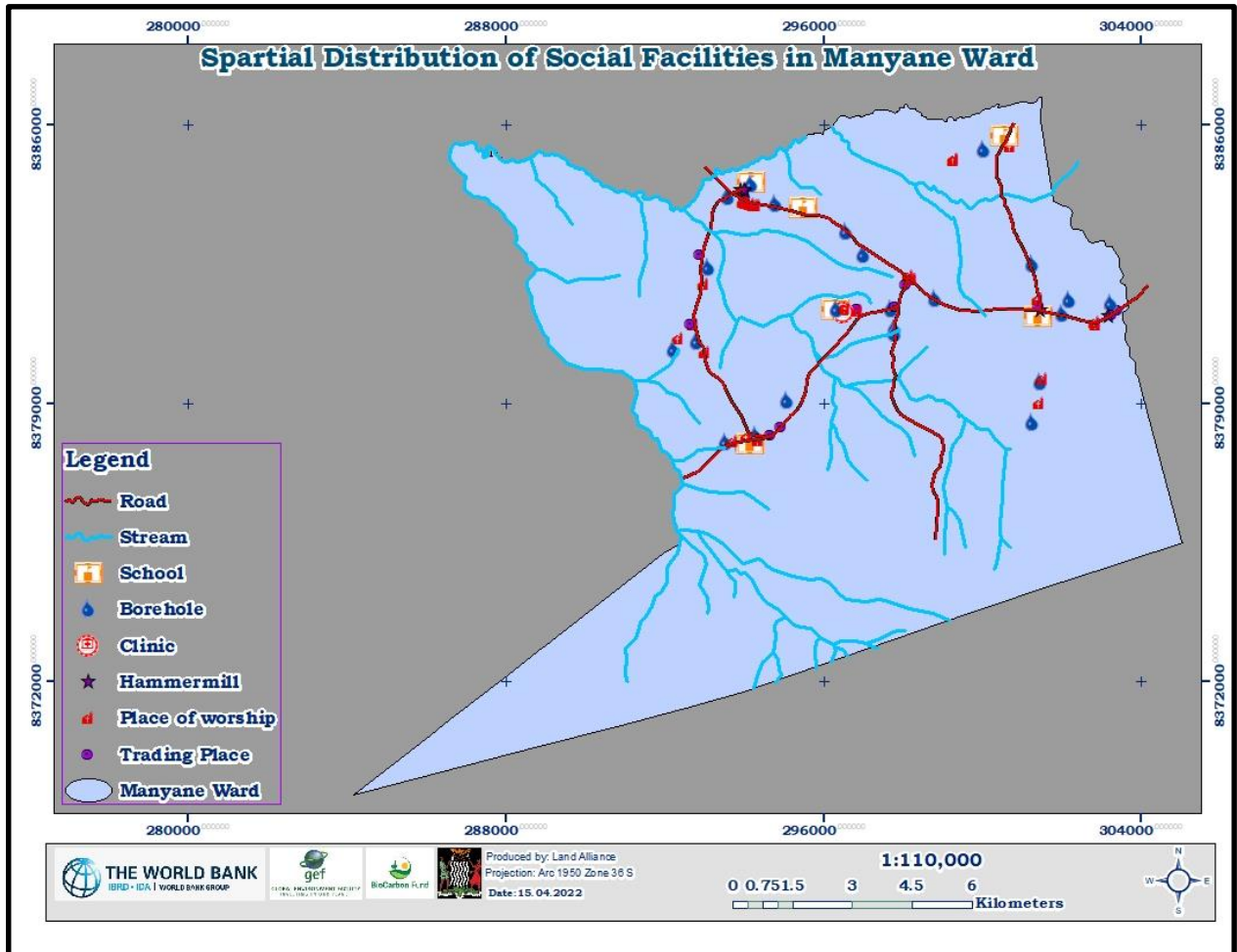


Figure 6: Spatial Distribution of Social Facilities in Manyane Ward

3.3 Source of Livelihood

Livestock keeping and subsistence farming are the predominant livelihood activities in Manyane Ward, with soya beans, maize, sweet potatoes, sun flower, tobacco, cotton and groundnuts being the main crops grown. Animals reared by the local residents of Manyane Ward include cattle, pigs, goats, sheep, chickens, and ducks. The products are either sold to the Food Reserve Agency

(FRA) or in urban centres of Petauke. The communities in Manyane Ward also survive on non-wood products such as fruits, caterpillars, mushrooms and honey among others.

3.4 Livelihood Security

Livelihood security is the secure adequate access to resources as well as income generating activities to meet basic needs and it is shaped by the changing natural environment (Kassa, 2018). Securing the livelihoods of Manyane Ward residents is closely associated with the limited development of economic opportunities in the area because most, if not all, residents depend on undiversified sources of livelihood based on rain-fed agriculture.

Livelihood security is often influenced by possibilities to diversify livelihood sources. If there are diversified livelihood sources, chances of attaining livelihood security are high. However, the over-dependence on agriculture as a livelihood source has contributed to soil degradation as the only option available is to open up new fields by cutting down trees, leading to deforestation, which has a negative effect on the climate. On the other hand, climate change affects rainfall patterns which further affect agricultural productivity thereby endangering the livelihoods of the local people of Manyane Ward.

3.5 Livelihood and Natural Resource Utilisation

Sustainable Livelihood refers to a livelihood that can cope with and recover from stresses and shocks, maintain or enhance its capabilities and assets both now and in the future, while not undermining the natural resource base (Ayantoye et al, 2017). The over-dependence of Manyane Ward residents on agriculture has led to increased pressure on the natural resources, especially land being the means to production for agricultural-based sources of livelihood. This unsustainable natural resource utilisation for survival, such as cutting down trees for field expansion leaves the farmlands bare, thereby resulting in soil degradation, which, in return, affects productivity.

Farming practices adopted by the locals contribute to soil degradation, forcing them to abandon old fields and open up new ones with a view to increasing yields. Thus, adopting conservation

farming is encouraged so that one field can be used over and over without affecting the yields. This, in turn, will reduce the rate at which new agricultural fields are being opened up, thereby conserving trees and forests.

Increase in population has equally contributed to unsustainable natural resource usage in that community members clear land for purposes of settlements and agriculture because their livelihood is entirely dependent upon farming. Thus, they either clear land for field expansions or to open up new fields. Additionally, although Manyane Ward is connected to the national electricity grid, most locals cannot afford to access electricity for use in their homes. As such, local communities heavily depend on wood fuel for their energy use. Thus, the high demand for firewood contributes to the rampant cutting down of trees.

Trees (forest) serve as natural habitats for various wild animals, birds and insects which get affected when their habitat is cleared. These animals, birds, and bees have the capability to serve as alternative livelihood sources through careful management. For example, the locals can venture into beekeeping as a business. However, the clearing of trees has led to the disappearance of biodiversity in the area.

3.6 Livelihood Constraints and opportunities

Agriculture is the major livelihood activity in Manyane Ward but due to climate change the area has been experiencing late onset of rains, occasional dry spells and floods, which have affected yields, thereby affecting the livelihood of people. However, there are opportunities of improving the yields through practising climate smart agriculture which ZIFLP, through the Ministry of Agriculture, has been implementing in the ward. Additionally, communities can be encouraged to form cooperatives or groups which various stakeholders can support to venture into environmentally-friendly value addition projects to process raw products and sell them as finished products. In order to minimise the livelihood constraints in the ward, sustainable investment in agro-industries to enhance value addition and the establishment of market infrastructures are of great importance. These can, in turn, improve food security and aid in

poverty reduction through exploration of alternative sources of livelihood. The table below summarises the constraints and opportunities in Manyane Ward:

Constraints	Opportunities
<ul style="list-style-type: none"> ● Low agricultural yields due to poor farming practices ● Lack of initial startup capital ● Lack of alternative livelihood sources ● Poor road network to access some villages ● Lack of electricity 	<ul style="list-style-type: none"> ● Switching to climate smart agriculture ● Venturing into value-addition activities ● Establishment of market infrastructure ● Construction of roads ● Investment in green energy e.g. solar

Table 4: Livelihood Constraints and Opportunities

3.7 Biodiversity Hotspots

The sustainable use and protection of biodiversity is an integral component of successful Land Use Planning. There is a need to identify the existing biodiversity together with the local population. Any conflicts of interest must be brought out and resolved leading to greater social acceptance. LUP is one of the tools utilised in biodiversity protection as it helps in identifying existing biodiversity and also creates a broad consensus on the sustainable use of natural resources leading to the conservation of biodiversity. Manyane Ward has various biodiversity hotspots and the following hotspots were identified during the PLUP preparation process:

3.7.1 Streams

Manyane Ward has several streams and no dam. These water bodies, which are biodiversity hotspots, can be protected by the enforcement of by-laws which restrict bad farming methods and also encourage adherence to the 50m buffer zone rule around water bodies as stipulated in the Environmental Management Act.

3.7.2 Forests

Manyane Ward has **one (1) National Forest (Luwenga)**, and small parts of **Musima National Forest** (Msima Ward) and **Pamadzi National Forest** (Manjazi Ward) also fall inside the Ward. Manyane Ward also has more than **5 hills** and no woodlots. These hills and forests are biodiversity hotspots which need protection and conservation. This is especially needed for Luwenga National Forest, which has been completely encroached into by local residents opening up agricultural fields. The entire land that was under Luwenga National Forest is currently being used for agriculture by the local residents.

Forests and hills are frequently affected by bushfires either as a result of mouse hunting or clearing of fields. Restriction of burning of fields to months between August and October and having by-laws that prohibit bushfires and expansion of fields and settlements can help protect forests and hills in Manyane Ward.

The map below shows the biodiversity hotspots in Manyane Ward that were identified during the PLUP preparation process:

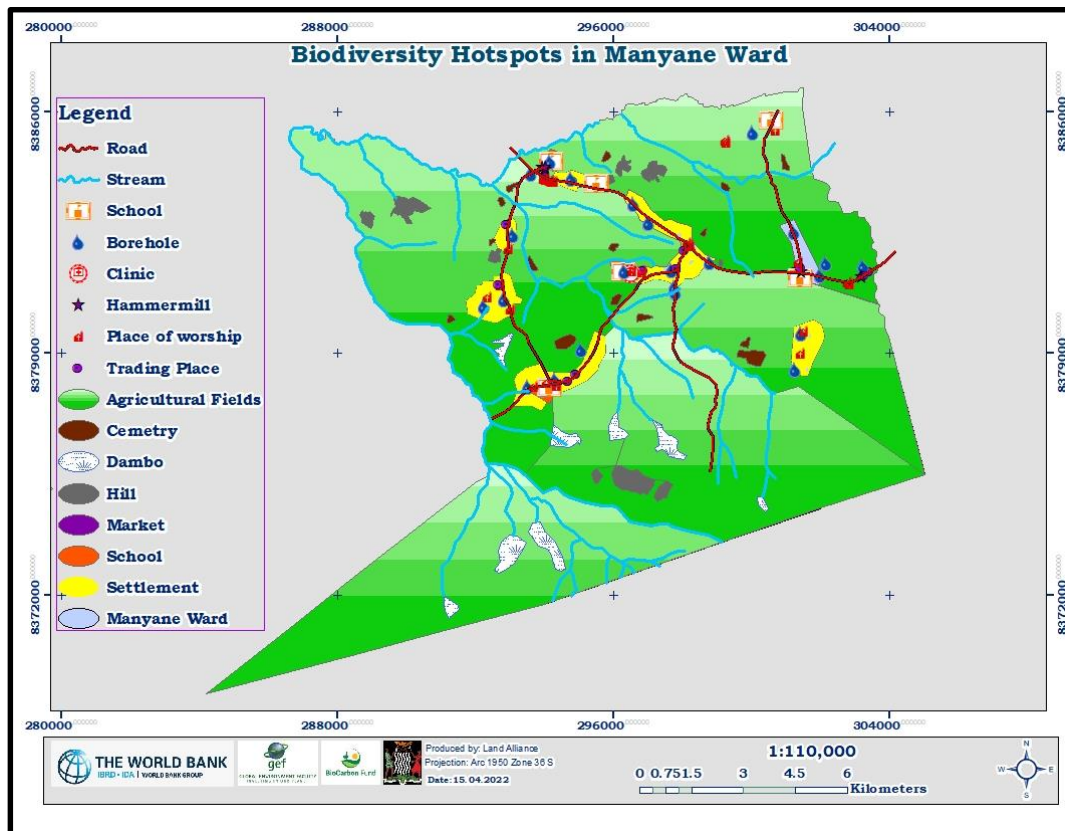


Figure 7: Biodiversity Hotspots

3.8 Ecosystem Function

Ecosystem function is the capacity of natural processes and components to provide goods and services that satisfy human needs, either directly or indirectly (de Groot et al 2002). Although unsustainable agricultural practices and charcoal production in Manyane Ward are the main factors transforming the natural resource base (which in turn affects the biodiversity due to habitat loss), unplanned settlements and soil degradation have also led to disturbance of the ecosystem. Further, poor livestock grazing area management has continued to cause a decline in the ecosystem. Seeing as how there are encroachments into the Forests in Manyane Ward, it is hoped that this PLUP will be instrumental in influencing forest conservation, ecosystem restoration and conservation of biodiversity.

4. CURRENT LAND USE PATTERNS

4.1 Overall Land Use

Manyane Ward has 1 National Forest and small parts of other National Forests that fall inside neighbouring Wards and more than 5 hills. The main land uses are as shown in table 5 below where agriculture is the leading land use, followed by forests, dambos, settlements, then hills. However, it is worth noting that some shared resources overlap the ward boundaries, meaning that communities share these resources. Shared resources need to be considered in relation to existing key stakeholders who live adjacent to them. The table below shows the different land uses, the area sizes and the percentages of the whole ward:

No.	Land Use	Hectares	% Coverage	Comment
1.	Total Ward Area (ha)	18,120.1		This is the total area of Manyane Ward.
2.	Agriculture	10,623.2	58.63%	This is land under cultivation. 883.4 ha (8.3%) of this falls under National Forest Land.
3.	Forest	1,121.7	6.19%	All land mapped as forest. 883.4 ha (78.8%) of this land has been encroached into by the local residents and is being used as agricultural land.
4.	Settlements	693.3	3.83 %	These include villages and other built up areas such as Schools, Health Facilities, Cemetery, Football Pitches, Markets, etc.
5.	Hills	116.4	0.64%	Hills not designated as forests but also not used for human settlements or agriculture
6.	Dambos	87.9	0.50%	Dambo areas reserved for animal grazing

Table 5: Land Use Reservation

4.2 Land Use Suitability Analysis

This is an analysis that was done to identify the suitability of Manyane Ward for agriculture as a land use. The analysis focused on agriculture as a whole and not necessarily evaluating the individual crops grown in the Ward and it was based on the soil types found in Manyane.

4.2.1 Soil Type Agricultural Suitability Analysis

There are 3 Soil Zones within Petauke District, namely: **Acrisols**, **Luvisols** and **Lithosols**. Manyane Ward is covered by **Acrisols** (Loamy soils). The Acrisol Soil Zone is characterised by rich clay subsoil mostly associated with humid tropic climate and often supports forested areas. Acrisols are easy to till but are characterised by low fertility, low water holding capacity and more toxic amounts of aluminium, which make them unsuitable for agriculture (Peter Schad, 2006). Agricultural activities in Manyane Ward are done in these Acrisols (Loamy soils). Figure 9 below shows areas of agriculture and the soil type cover in Manyane Ward:

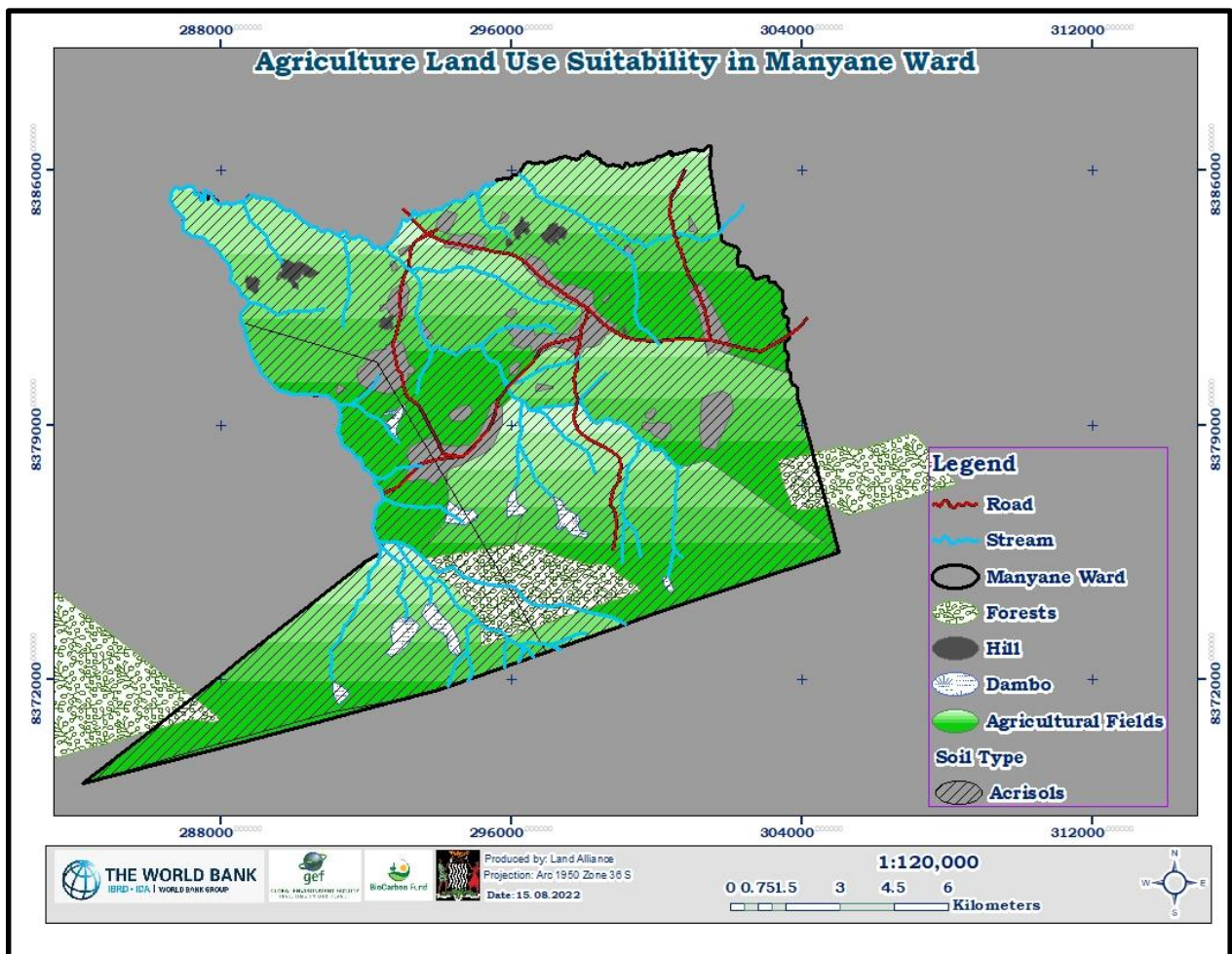


Figure 8: Manyane Ward Agricultural Suitability Analysis Map

4.3 Land Resource and Administrative Boundaries

The land resources captured during the PLUP process are under Manyane Ward and may spill over into other surrounding wards (such as Manjanzi and Kanyanga). However, despite the overlapping of these shared resources between wards local people in areas around Manyane acquire their services from Manyane Ward. The map below shows the land resources in Manyane:

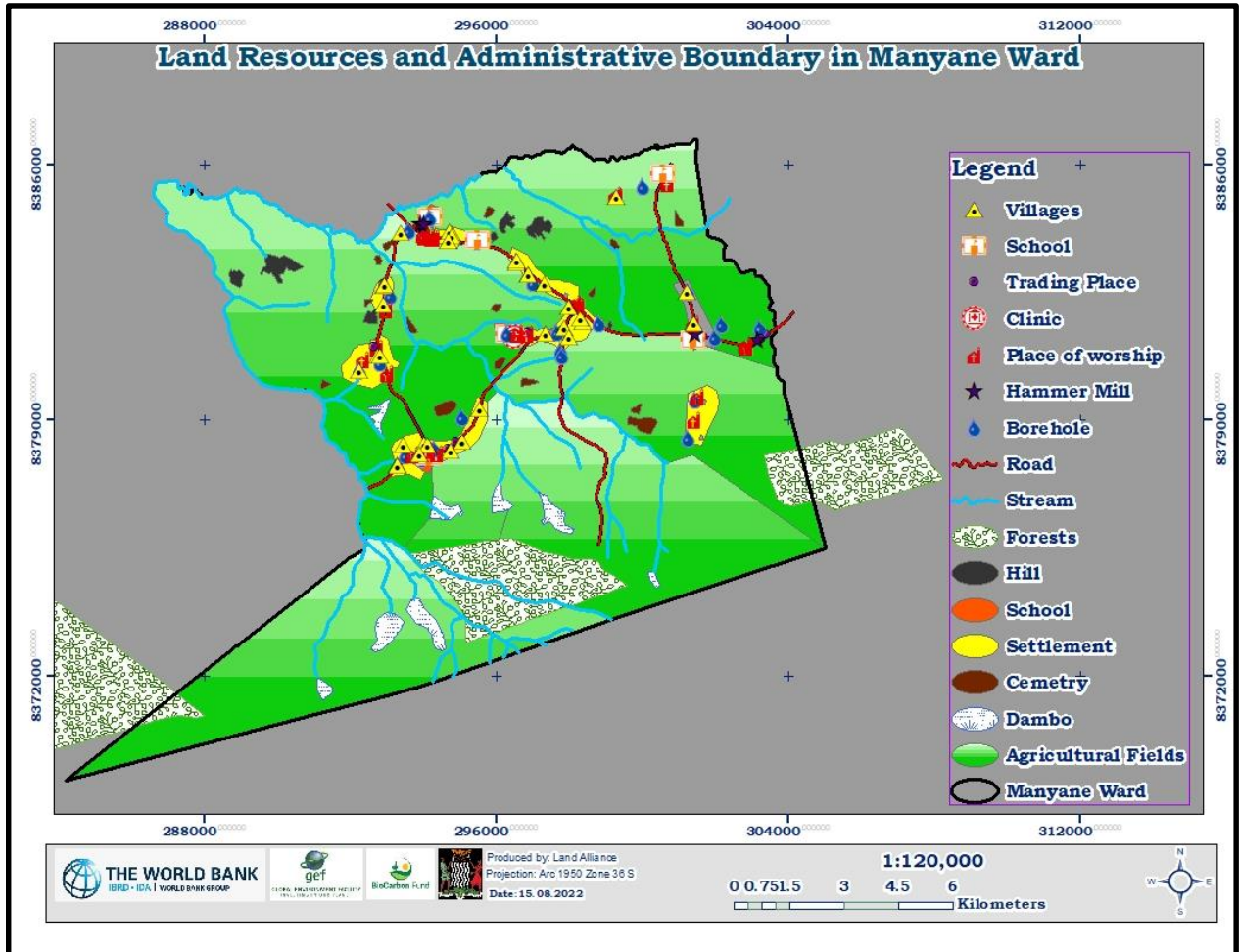


Figure 9: Land Resource and Administration Boundaries

4.4 Current Land Uses

In terms of land uses, Manyane Ward is mainly covered with agricultural fields, forests (**Luwenga National Forest** and small parts of **Pamadzi National Forest** - Manjazi Ward, and **Musima**

National Forest - Msima Ward), settlements, hills, dambos, as well as areas for social services such as schools, places of worship and other communal services like cemeteries, roads and streams. The map below shows the current land uses in Manyane Ward:

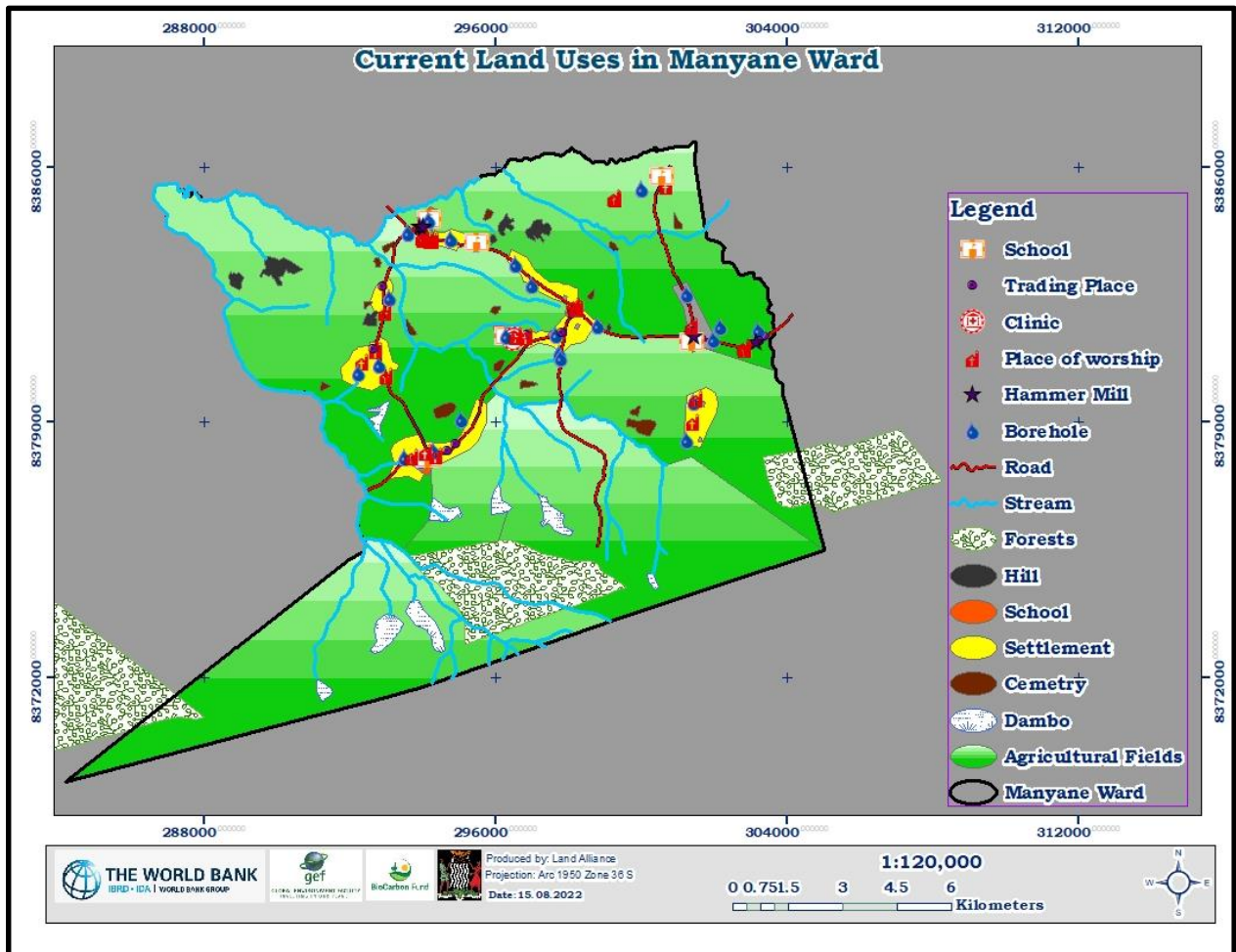


Figure 10: Current Land Uses

4.5 Land Use and Agriculture

Agriculture is the most common land use in Manyane Ward. Most of this land is under Climate Smart Agriculture supported by the Government. The map below shows areas of Manyane that are used for agriculture:

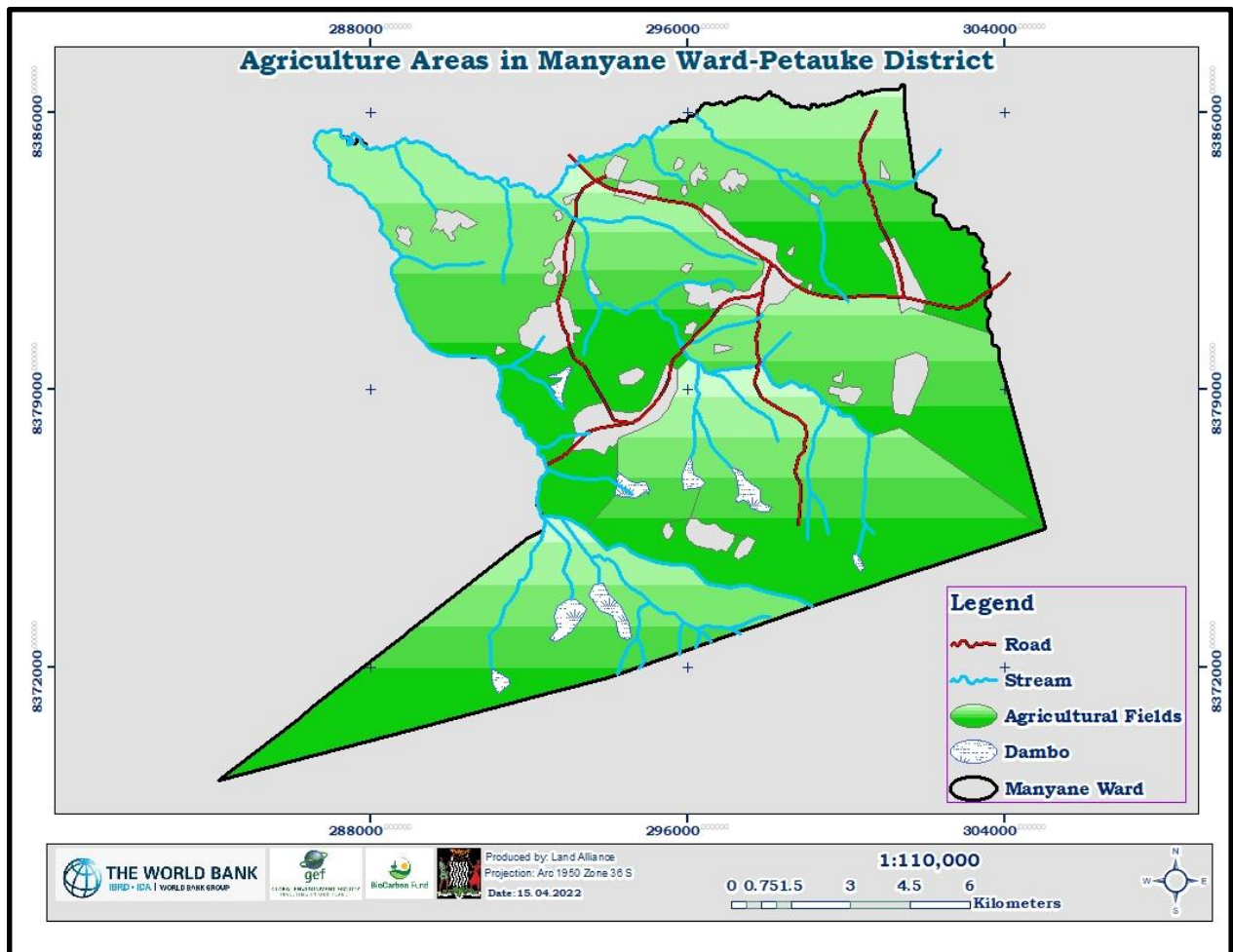


Figure 11: Land Use and Agriculture Map

4.6 Land Use and Forest

The purpose of protecting forests is to provide for conservation and development of forest with a view to securing supplies of timber and other forest produce, protection against floods, erosion and desiccation, withering and maintaining the flow of rivers. There is one (1) national forest in Manyane Ward (**Luwenga National Forest - 883.4 ha**), part of **Pamadzi National Forest - 151.1 ha** and part of **Musima National Forest - 82.2 ha**. Luwenga National Forest has been completely encroached into by local residents conducting agricultural activities. The hills are where they get firewood, mushrooms and vinkubala (mopani worms).

In as much as areas for conservation can be set aside by the community, there is need for awareness on the effects of indiscriminate cutting down of trees along the water bodies where

there is riverine vegetation. This will mitigate erosion and siltation in order to enable the water bodies in the area to restore and hold water for a long period even during the drier seasons. The trees along the river banks will also be conserved in order to prevent streams from drying up early and this will result in the rise of the water table. The map below shows the forest areas and hills of Manyane Ward:

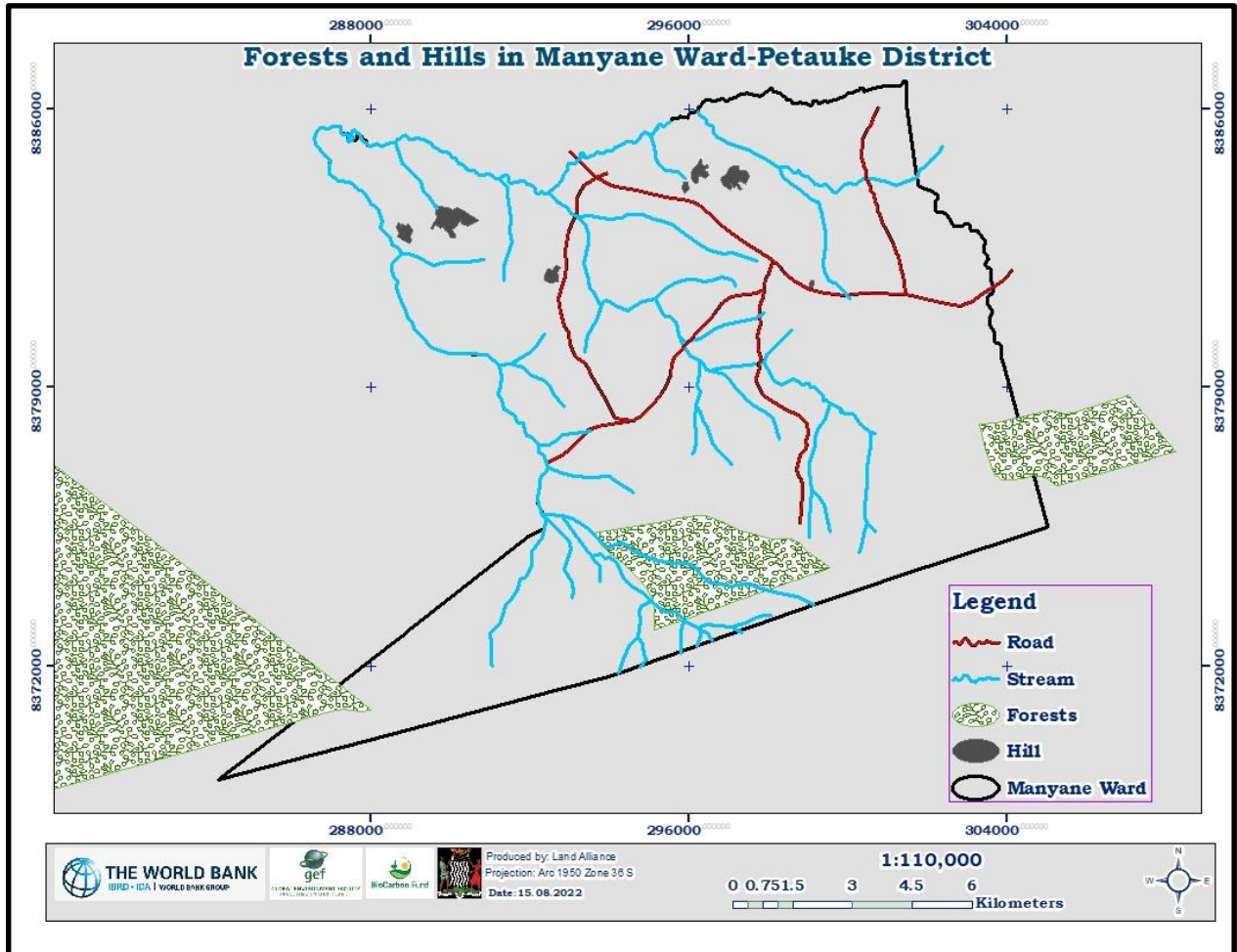


Figure 12: Land Use and Forest

4.7 Land Use and Wildlife

One of the objectives of PLUP in Manyane Ward is to create an enabling environment for conservation and development of wildlife with a view to increasing economic activities leading to improved livelihood in the area. Historically, there were a lot of animal sightings and presences of wildlife in Manyane Ward, this was attributed to an enabling vegetation cover, lower human

population, smaller agricultural fields and respect for nature by the local people through traditional authority.

One way to restore wildlife (small animals) in the area, especially in the forests, is by enhancing forest conservation, engaging in sustainable agricultural practices, enhancing conservation meetings on coexistence with wildlife, enhancing mitigation measures on human-wildlife conflict, and introducing exchange programs.

4.8 Land Use and Mining

There are currently no mining activities taking place in Manyane Ward.

4.9 Land Use and Tourism

There are currently no tourist attraction sites or activities in Manyane Ward.

4.10 Land Use and Physical Development

Manyane Ward is characterised by various physical developments ranging from schools, churches, settlements, and markets. Changes in land use for creation of new settlements or expansion of existing ones is an area of concern in Manyane Ward because land used for settlements usually becomes a permanent feature, never to revert to the original (environmentally friendly) land use. This has also been evidenced by the mushrooming of unplanned settlements within protected areas.

The Ward has **six (6)** schools, 5 of which are primary schools, namely: **Mankungwe, Mando, Sanjama and Matonje Primary Schools** and **Pilimbira Community School**, and one is a secondary school, namely: **Ng'ombe Nimatole (Matonge) Day Secondary School**.

There are **two (2)** health facilities in Manyane Ward (**Mankhungwe Health Post** and another unnamed Health Post).

The map below shows the physical developments of Manyane Ward:

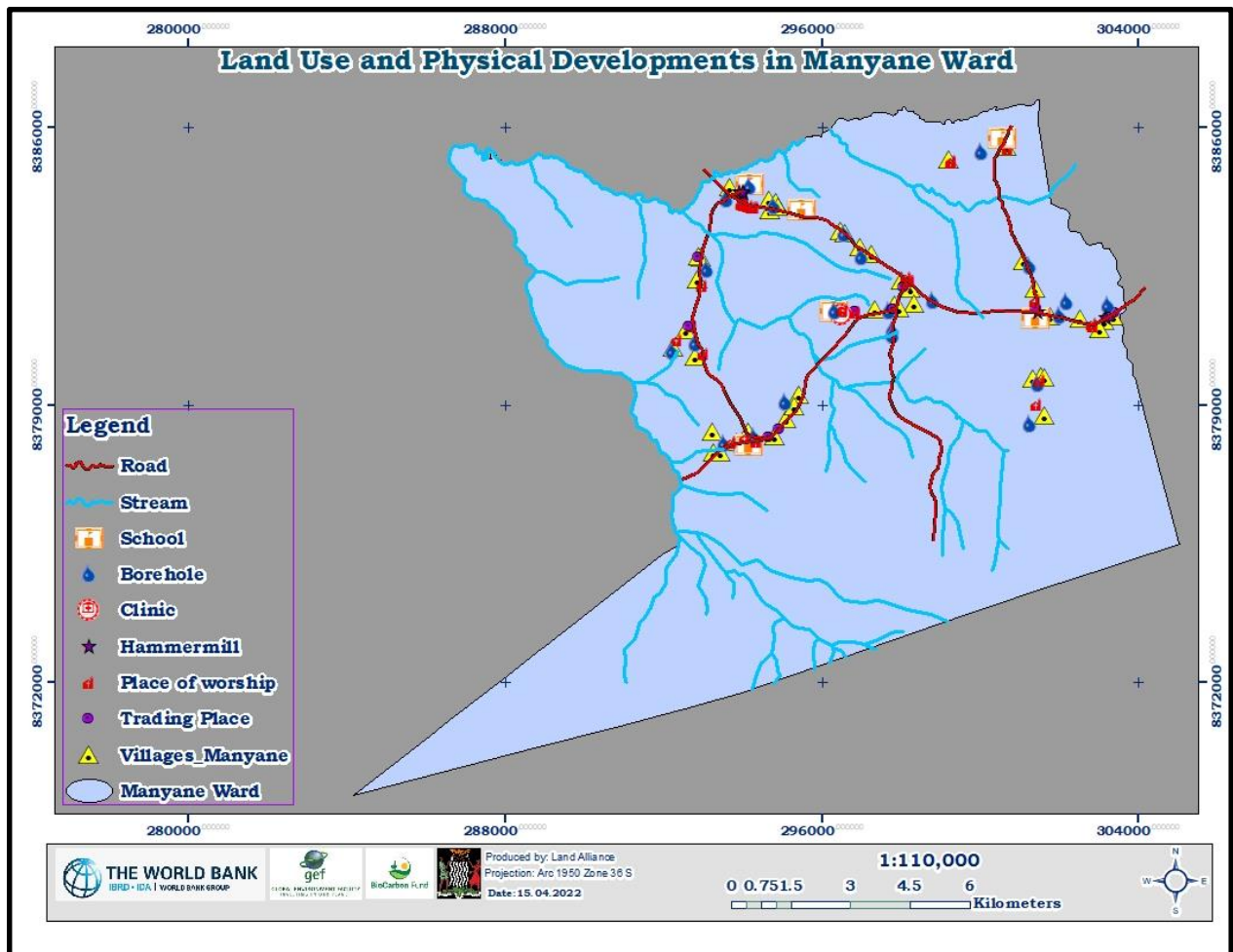


Figure 13: Land Use and Physical Development

5. COMMUNITY PARTICIPATION

5.1 Community Engagement Process

Before the commencement of community engagement meetings, the DMTs were oriented in Participatory Land Use Planning with a lens of SBIA. The PLUP training workshop was conducted for five days, facilitated by officers from the Physical Planning Unit, Provincial Administration and officers from Land Alliance, a Technical Service Provider engaged to facilitate Participatory Land Use Planning in Eastern province. DMT staff from Petauke/Lusangazi were trained in facilitation of PLUP. At the end of the training, the DMT was guided to prepare an action plan and budget to be used for facilitating PLUP activities in Petauke District.

In the initial stages of PLUP activities in Manyane, Chieftainess Mwanjawanthu was identified to be the custodian of land in Manyane Ward. The team went to the Chieftainess to explain and solicit support for implementation of PLUP in the Ward falling in her Chiefdom. The chief expressed happiness and promised to offer support during the whole process of PLUP. She provided responsible Indunas to work with.

Community engagement and participation is cardinal to the success of every community project, as it inculcates project ownership and sustainability. PLUP in Manyane Ward was embarked on through a series of community engagement meetings which involved meetings with the Chief, Indunas, Headpersons and eventually the community at large in sharing the PLUP concept so that Free Prior Informed Consent (**FPIC**) could be adhered to.

Since Manyane ward has villages which are far stretched apart, community engagement meetings were held at **four (4)** designated villages. This was done to ensure that many members of each village community attended for the purpose of getting acquainted with the PLUP concept and getting first-hand information for better and uniform decision making processes in each respective community stretching across the whole Ward.

Community engagement meetings were held in three phases as follows:

First Phase: Consisted of the first village meetings. During the first village meetings, community members were exposed to the concept of PLUP which involved community identification of shared resources, identification of problems affecting the management of resources, sketch mapping of these resources and other spatial features. Participants were guided in drawing sketch maps that depicted resources in their area. To enhance participation, participants were put in three separate groups of youths, women and men. This allowed peer-to-peer interaction among participants during the exercise. After drawing the sketch maps one representative from each group was asked to present the maps before the meeting.

The maps revealed a number of resources, natural and man-made, that were in Manyane Ward. These resources included streams, forests, hills, dambos, fields, schools, health facilities, roads

etc. After the exercise, facilitators captured images of the maps and original copies were left with the communities. The pictures below demonstrate the steps during this phase:



Second Phase: Consisted of rapid village assessments where village coordinate points were captured by the enumerators in the company of Indunas so that Shared Resource Maps can be digitised and produced. Below is a picture showing the product of this stage in the process:

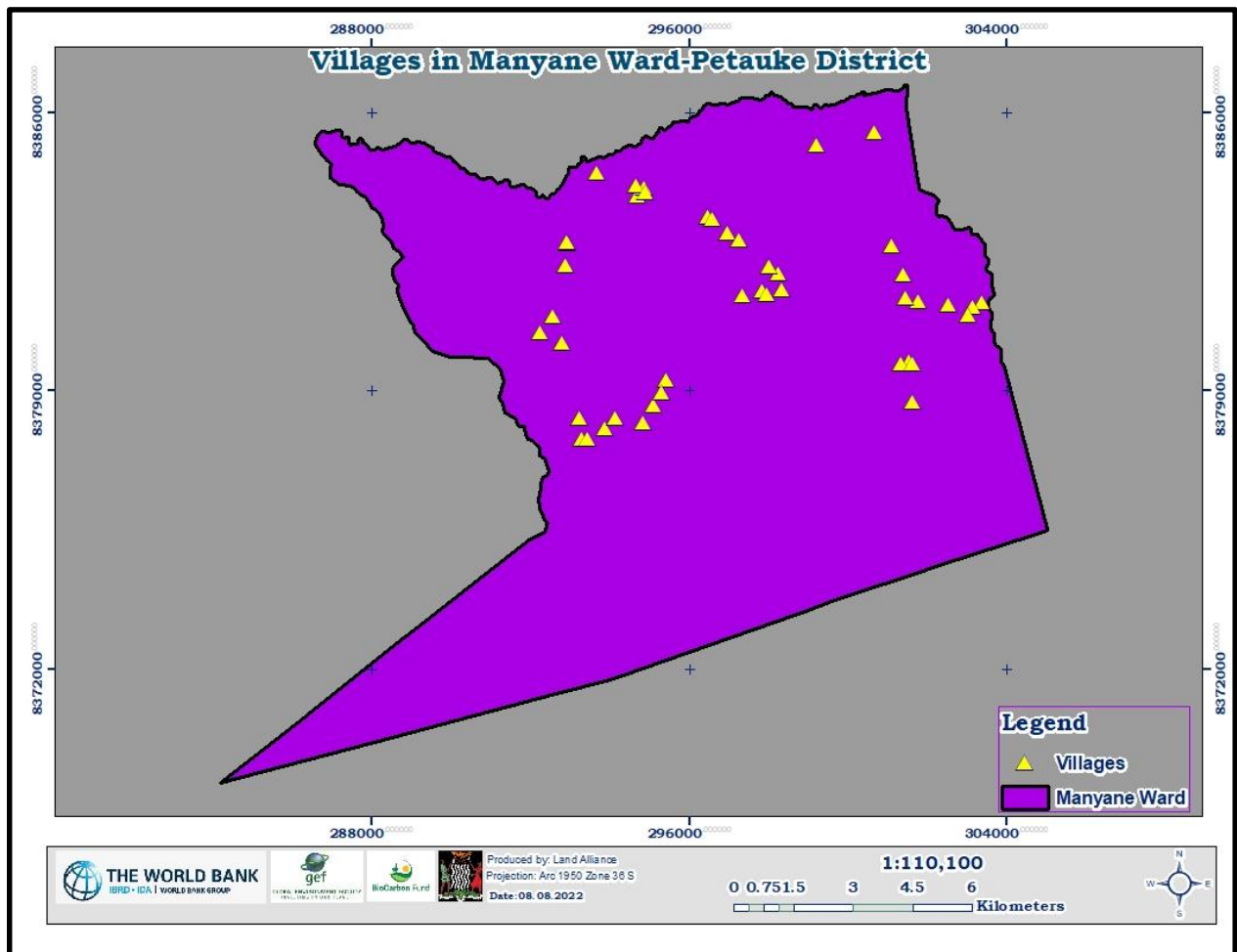


Figure 14: Sample output of Rapid Village Assessment Activity

Third Phase: In this phase community engagement meetings were also conducted for the verification of the produced Shared Resource Maps in all the villages. This presented an opportunity for the community members to make objections, corrections and additions on the earlier submitted shared resource information. Community engagement meetings also involved zoning activities in all the village areas for future land uses. Members of the community were involved in the mapping of the proposed future land use areas. It was during the third phase of community engagement that Resource Governance Rules were also formulated for approval by HRH Chieftainess Mwanjawanthu. Below are pictures showing communities validating the mapped resources and proposing areas of conservation:



The attendance registers for each meeting have been attached in Annex 2.

5.2 Agreed Local Rules for Land Use and Resource Management

Prudent management of natural resources where the residents derive much of their livelihood in the rural communities is a daunting task in the absence of agreed upon local rules for land use and resource management. The formulated by-laws for Manyane Ward aimed at facilitating the prudent use of local resources are attached as Annex 1.

5.3 Problem Identification

There are several challenges that rural communities face and Manyane residents are no exception. The most prominent challenges are:

- Unsustainable agriculture practices.
- Lack of tenure security due to undocumented tenure rights.
- Marginalisation of the vulnerable groups such as women and youths.

Issues affecting land use in Manyane Ward were captured during the clustered community meetings which were conducted. The problems, causes and suggested solutions to the problems faced by residents of Manyane Ward are as outlined in the table below:

Problem	Causes	Possible Solutions
<ul style="list-style-type: none"> • Inadequate safe water sources • Drying of streams • Delayed rains • Loss of soil fertility • Reduced crop yield • Shortage of land for agriculture • Poor roads • Deforestation • Inadequate communication facilities • Inadequate Dams 	<ul style="list-style-type: none"> • Lack of safe water facilities • Poverty and ignorance • Seasonal streams and late onset of rains • Land degradation • Unsustainable agricultural practices • Lack of alternative livelihood sources • Lack of by-laws • Inadequate communication towers • Siltation 	<ul style="list-style-type: none"> • Drilling of boreholes and Dam construction • Adopting conservation farming practices • Adopting climate smart agriculture practices • Rehabilitation/construction of roads and related infrastructure • Skills in mushroom conservation and bee keeping • Installation of Communication Towers.

Table 6: Problems Identified

6. CORE ISSUES AFFECTING LAND USE AND THE ENVIRONMENT

At the four clustered community meetings held at Mankhungwe, Sanjama, Chizanda and Matonje, members across villages in Manyane Ward identified various problems affecting them. During this session, participants were guided on how to prioritise the identified problems. This was done through pair-wise ranking, which involved participants comparing a particular problem against each of the other identified problems. This was done to help communities to identify and rank problems in order of importance and gravity so that core problems could be identified for intervention. This activity revealed the actual core problems to be addressed, as the others identified as problems were simply the results of the core problems. The main core problems identified at these meetings are listed in table 6 above.

The quest to increase crop production often leads to expansion of agricultural fields and consequently encroachment into forests as is currently the case in Manyane.

The high levels of poverty in the Ward make communities heavily dependent on fuelwood and charcoal. The identified alternative sources of energy such as gas stoves and cook stoves are unaffordable and extensively unavailable.

Land tenure regarding forests and other communal/shared resources is often misunderstood because community members claim that forests and trees in the wild in general do not belong to anyone. In addition, forest fires were identified as a key driver to deforestation and forest degradation. There is a general belief held among communities that bush fires, being a long-term part of their land and forest management system and historical part of their culture, do not significantly affect forests in a negative way.

Participants were further guided to identify the causes of such problems. This was done to make them realise that there was a human activity element related to the problems. Facilitators summed up the activity by explaining that some of the problems identified, especially those related to the environment, were as a result of lack of Land Use Planning.

6.1 Lack of Safe Water Sources

Residents of Manyane Ward mainly depend on boreholes and water wells for water, although most of the boreholes are limited to areas around schools and health facilities. As a result, those living far from such facilities have challenges in accessing water, especially that all the streams in the Ward are seasonal. The map below shows the distribution of water points in Manyane:

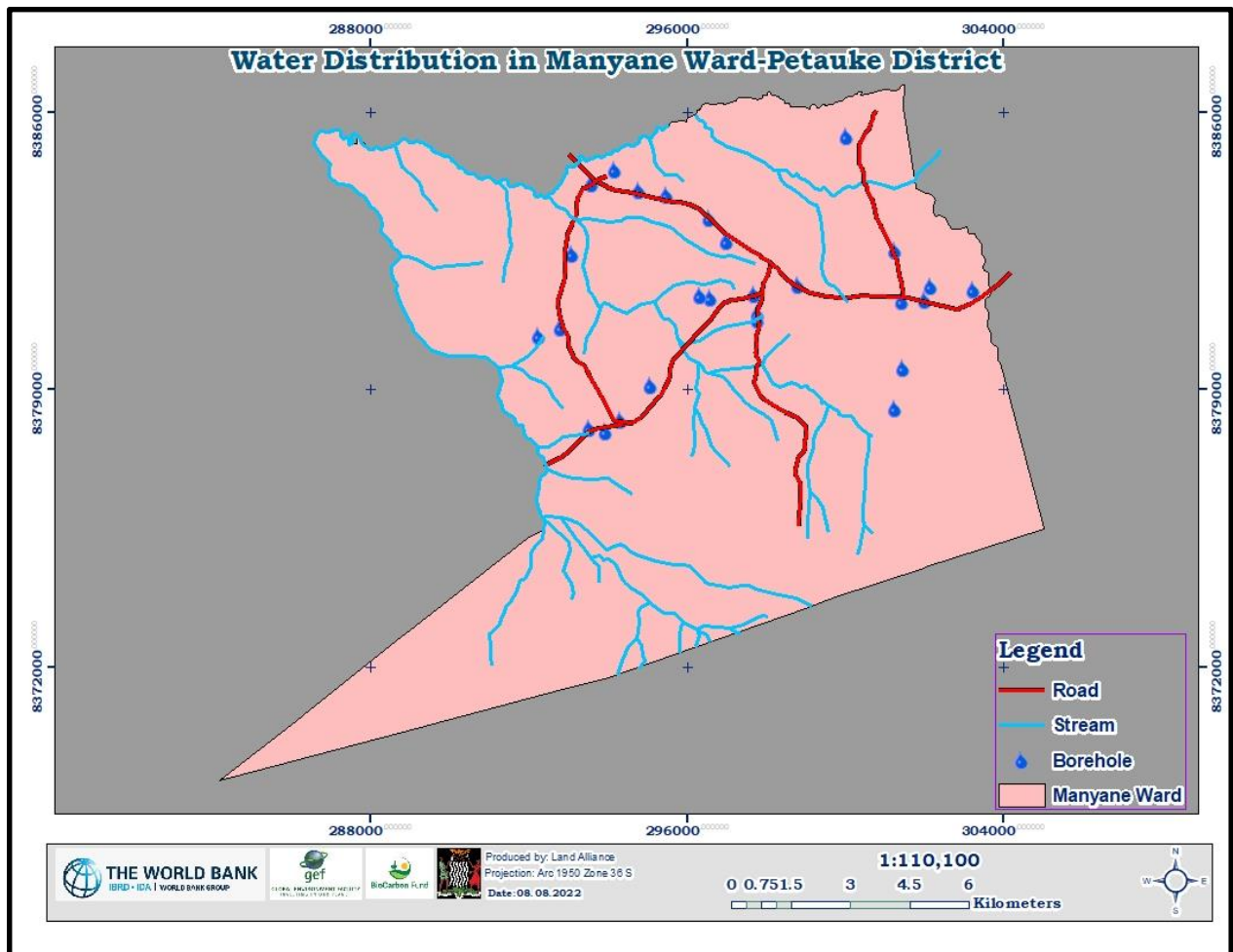


Figure 15: Distribution of Water Sources

6.2 Soil Degradation

This problem is mainly as a result of encroachment into forest areas and protected areas, unsustainable agricultural practices, bush fires and cutting down of trees for either charcoal production, field expansion or by poorly managed animal grazing. This has, in turn, affected land productivity, leading to food insecurity and livelihood challenges. Thus, adoption of Climate Smart Agriculture and formulation of by-laws prohibiting unsustainable land resource use can help avert the problem of soil degradation.

6.3 Poor State of Roads and Related Infrastructure

Inadequate transport system and lack of proper road network hampers development in Manyane Ward because the movement of goods and services (required for such development) depends on transportation. The Ward also lacks other road-related infrastructure such as bridges/culverts, making certain areas inaccessible, especially during the rainy season. This makes access to essential services such as health facilities and schools very difficult for residents, especially those in far away places.

6.4 Long Distances to Schools

The entire Manyane Ward has a total of **five (6)** primary schools and **one (1)** secondary school. These schools enable children within the Ward to receive adequate primary education, but the presence of only one (1) secondary school in the Ward means children cover long distances to access secondary school education.

With reference to the Ministry of Education standards of population of having access to school facilities within 5 kilometres distance, the analysis on Manyane Ward shows that:

- Only **24** of the **45** villages in the Ward fall within the recommended 5km radius of the only Secondary School (Ng'ombe Nimatole Matonge Day School) in the Ward. The remaining **21** fall outside this recommended Service Radius.
- **All** villages in the ward fall within the recommended 5km radius of one or more of the 5 primary schools in Manyane Ward.

That being the case, secondary education levels are generally low in Manyane Ward. This is mainly attributed to the lack of adequate secondary education facilities due to the presence of only one (1) secondary school in the Ward. The figures below show the education facility service radius for primary and secondary education:

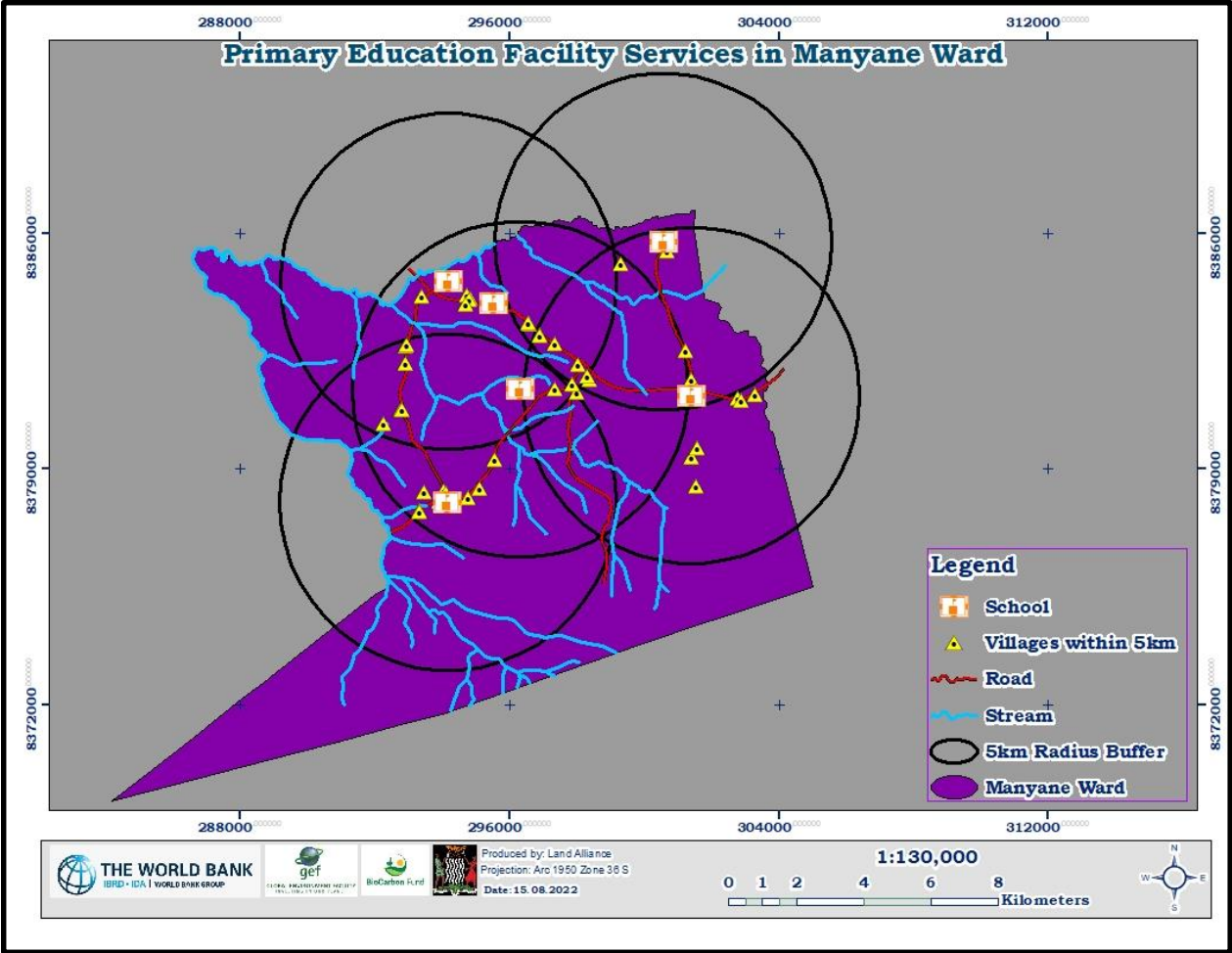


Figure 16: Primary Education Facility Service

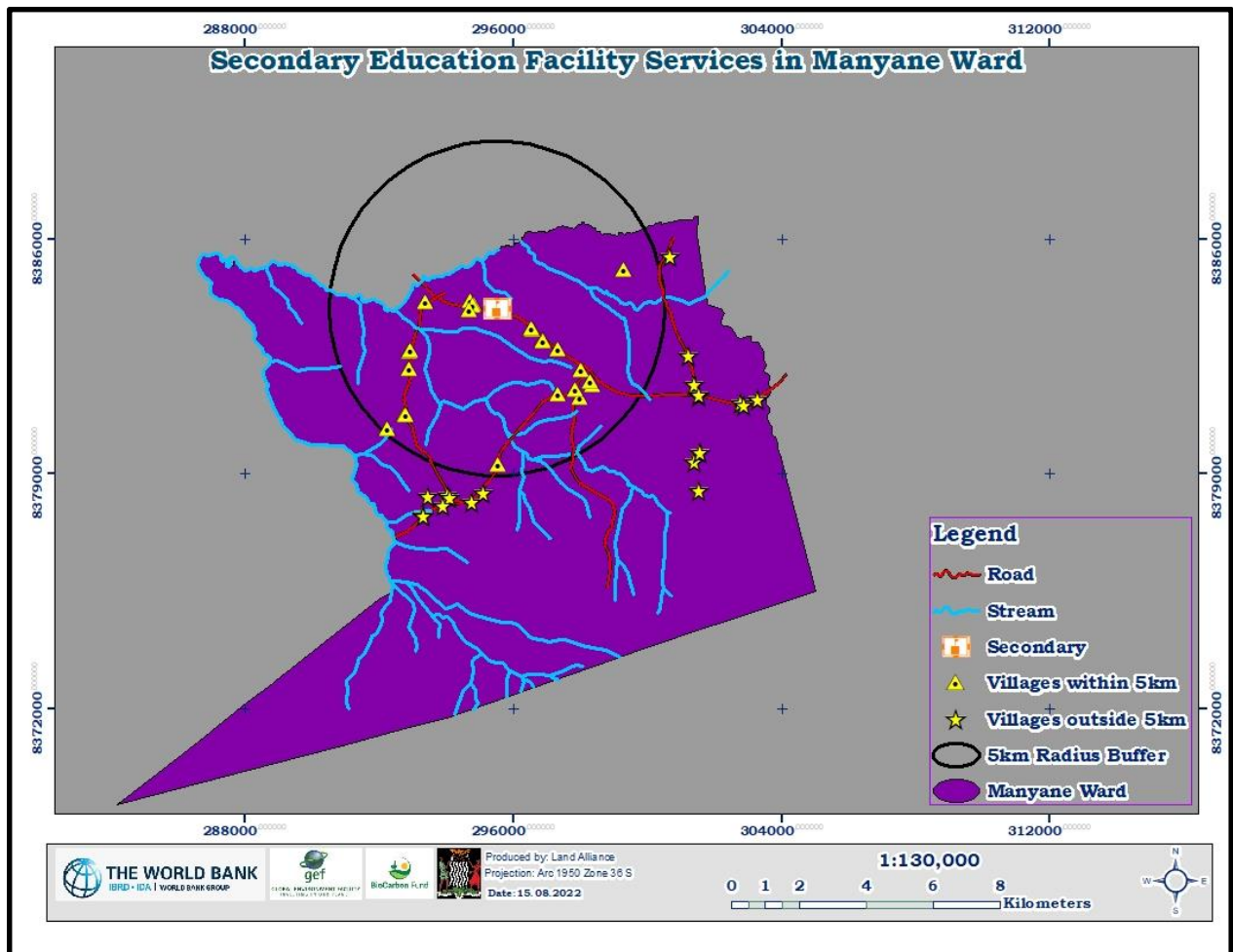


Figure 17: Secondary Education Facility Service

6.5 Inadequate Health Facilities

There are currently **one (1)** health facilities in Manyane Ward (**Mankhungwe Health Post** and another unnamed Health facility) servicing residents of Manyane and other surrounding areas.

With reference to the government standards of population of having access to health facilities within a 5 km distance, the analysis on Manyane Ward shows that:

- **33** villages out of the **45** villages found in Manyane Ward fall within the recommended 5 km radius of at least one health facility. The remaining **11** villages in Manyane Ward fall outside this recommended service radius.

Thus, it suffices to mention that any future plans by the community should take care of the demand for primary health care, which will increase in Manyane Ward and surrounding areas due to people migrating from other parts of the district. The current health services will need to be expanded in order to improve the quality of health care. More health personnel will be required to ensure that the current high health worker to patient ratio is reduced. The figure below shows the service radius for health facilities in Manyane Ward:

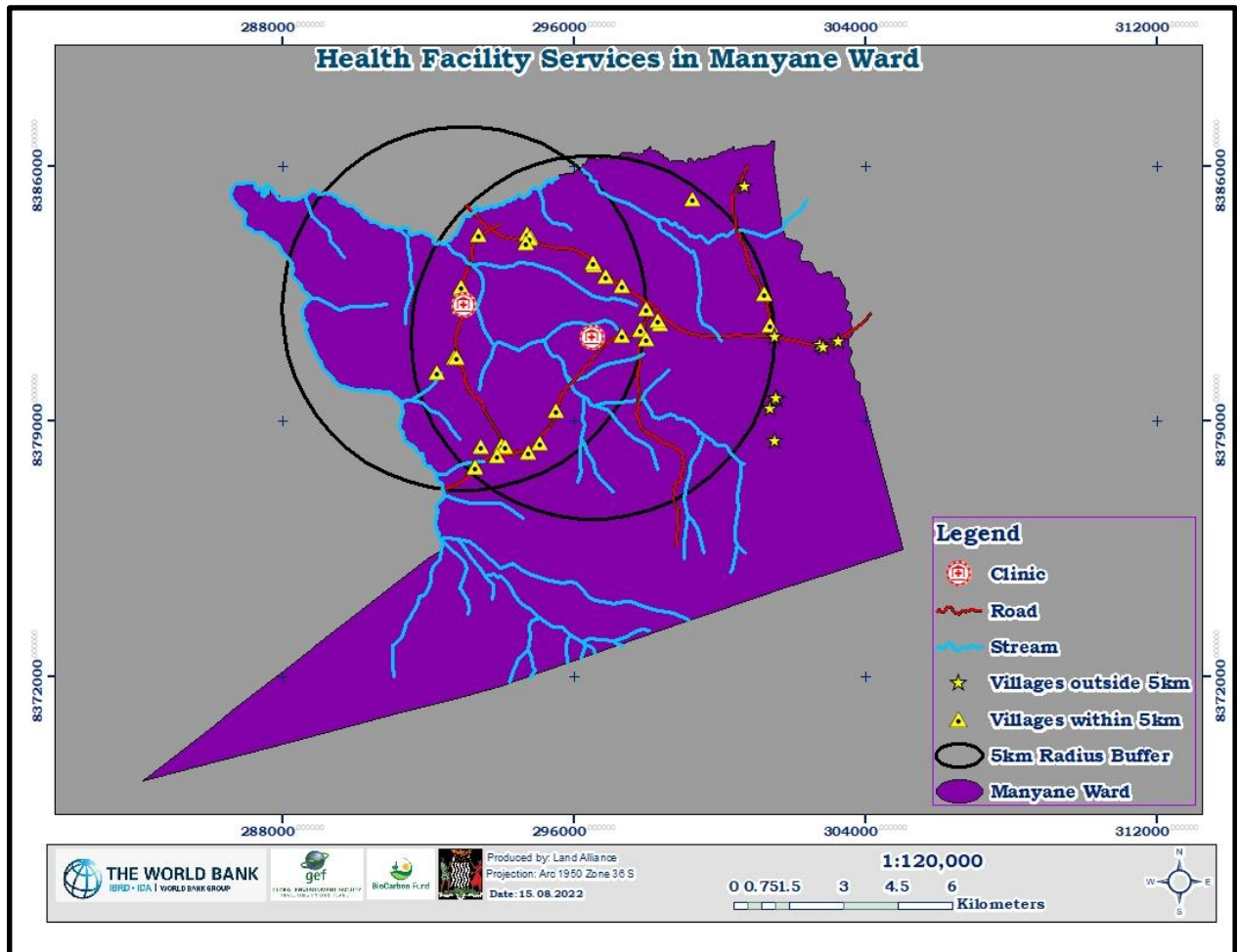


Figure 18: Health Facility Service Radius

6.6 Inadequate Telecommunication Facilities

The community in Manyane Ward identified telecommunication as a major challenge affecting the Ward. The data analysis in the area shows a deficiency of this service, with no network tower installed in the Ward. The telecommunication network tower installations facilitate the ease of

access to diverse forms of information within the shortest possible time. Having telecommunication towers installed in the Ward would enable the residents of Manyane Ward and surrounding areas to interact through phone-calls, messaging, internet etc. With the development of the 4G internet speed, citizens are able to surf the internet with less difficulty. Mobile money platforms have also made money transactions easier. In order to make this possible, several service providers ZAMTEL (Zambia Telecommunications Network), MTN (Mobile Telecommunications Network) and AIRTEL have established themselves in Petauke District, through the installation of network towers which enable transmission of signals containing information from the sender to the recipient, and vice versa, and capturing of satellite signals.

The advent of the Covid-19 pandemic, which led to the closure of all learning institutions in the country in 2020 and 2021, forced most institutions to conduct lessons using e-learning platforms, especially for students and pupils in examination classes. Manyane Ward was no exception to this, and the lack of telecommunication towers presented challenges in internet access for residents of the Ward and most pupils in Manyane Ward were affected by this. This highlights the need for adequate telecommunication facilities to be installed within the ward.

7. LAND USE PLANNING – ZONING, VALIDATION AND GOVERNANCE RULES

This activity was meant for communities to object, correct and confirm that all the mapped resources were captured on the maps and propose areas to be protected. Communities agreed on the by-laws that will help them manage their resources and other areas of development in a sustainable manner. Four (4) clustered meetings were held in Manyane Ward at Mankhungwe, Sanjama, Chizanda and Matonje. Printed shared resource maps on A1 were presented to the communities to confirm if the shared resources shown on the maps were a true reflection of their input. This was done in a consultative manner to make sure that the communities take responsibility for the process and the product, which is the PLUP. Community members selected the resources to be protected and zoned the areas and proposed other areas for developmental activities such as trading areas, clinics, schools and any other facilities that would support the improvement of their livelihood. Shared resources in the Ward overlap between sections/areas, especially that these sections/areas have imaginary boundaries. Thus, for the purpose of clearly presenting the proposed land uses, the meetings were clustered into four (4) areas with total attendance of 235 disaggregated as 91 males and 144 females as shown in table 7 below:

Community Area	Female	Male	Total No. of participants
Mankhungwe	80	27	107
Sanjama	18	19	37
Chizanda	17	16	33
Matonje	29	29	58

Table 7: Attendance Statistics

7.1 Mankhungwe Community Meeting

The first validation meeting was held at Mankhungwe primary school with a representation of 11 villages (**Nyanthalo, Abram, Nyamilongo, Kapinde, Mpwal, Mankhungwe, Julius, Nthambalika, Mulinda, Mkonya and Kamono**). The total number of participants in this meeting was **107** (27 Male, 80 Female). The community proposed Mankhungwe as a forest and Chmyangulu and Chikanula as woodlots. They also proposed the construction of a dam at Bvumbwe stream, and fish ponds also at Nyansato stream and upgrading of Mankhungwe health post into a full-fledged clinic.

The rationale for the proposed developments was built on the problems that were identified during the first village meetings conducted in the area as a measure of mitigating the effects of climate change and improving their welfare by identifying alternative sources of livelihoods. For example, if a dam can be constructed, it would provide an opportunity for smallholder farmers to venture into fish farming and irrigation farming. Meanwhile, the same dam would provide water for their animals and in the long run, the dependence on Charcoal production as a means of survival would reduce. The forest would provide an opportunity for beekeeping and mushroom harvesting. Investments would be attracted, which would result in the upgrading and servicing of roads. The table below shows the proposed areas of development and the land coverages:

S/N	Proposed Development	Area (Ha)
1	Dam (Mvumbwe Stream)	18.79
2	Fish Ponds (Mvumbwe)	10.72
3	Fish Ponds (Nyasanto)	6.44
4	Forest (Mathungwa)	12.56
5	Forest (Chinyangulu)	20.95
6	Forest (Chikanula)	25.27
7	Clinic (Upgrading of Mankhungwe Health Post into a Clinic)	3.63

Table 8: Land Reservations for Mankhungwe Community Meeting

The map below shows the proposed developments and future land uses for villages that were represented at the meeting held at Mankhungwe:

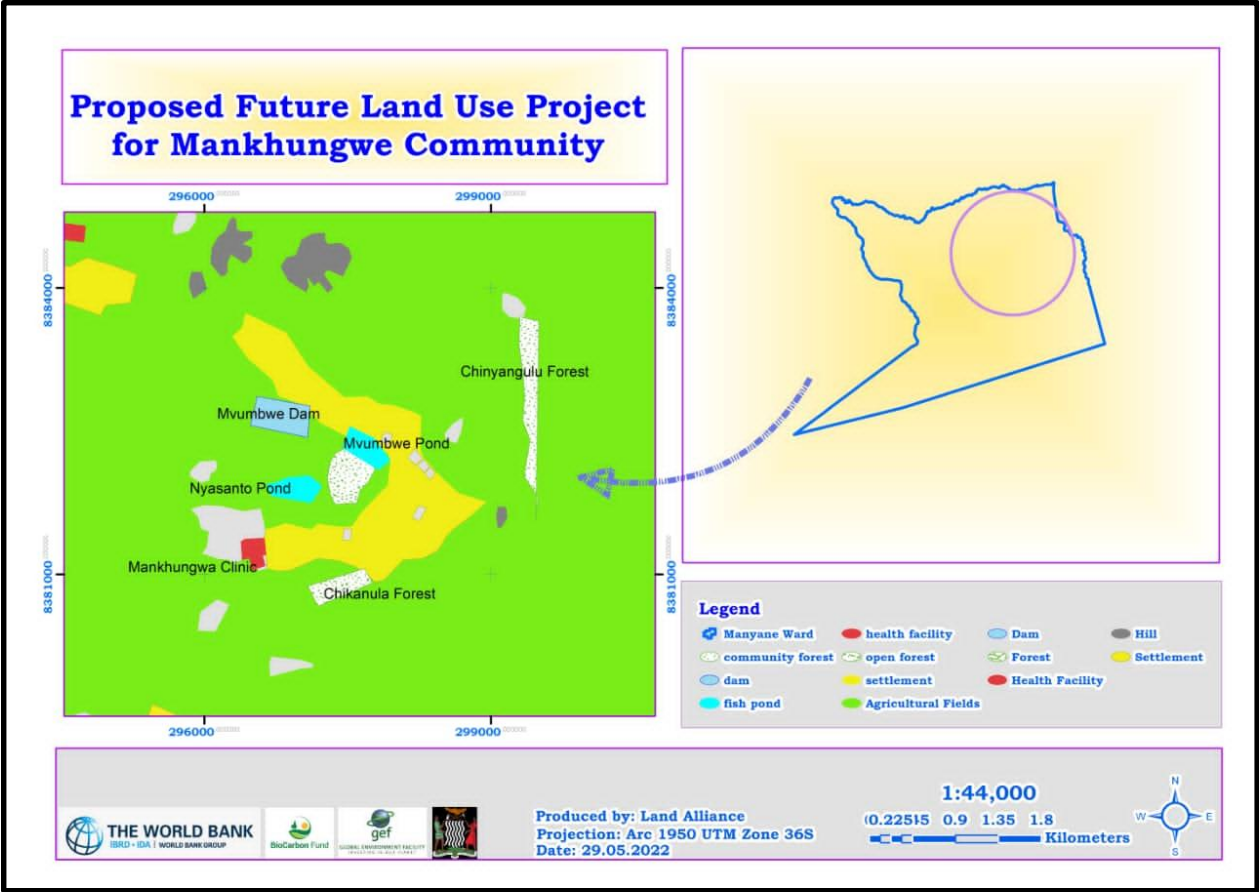


Figure 19: Future Land Use Map for Mankhungwe Community Meeting

7.2 Sanjama Community Meeting

The second validation and zoning meeting was held at Sanjama Primary School with a representation of four (4) villages (**Malima, Monga, Kabanika and Makoza**). The total number of participants was **37** (19 Male, 18 Female). The community proposed a site for forest, and proposed the construction of fish ponds, a dam and a clinic. The justification for the proposed developments was built on the problems that were identified during the first village meetings conducted in the area as a measure of mitigating the effects of climate change and improving their welfare by identifying alternative sources of livelihood. The table below shows the proposed areas of development and the land coverages:

S/N	Proposed Development	Area (Ha)
1	Forest (1 Site)	21.75
2	Clinic (1 Site)	-
3	Fish Ponds	6.44
4	Dam (1 Site)	24.72

Table 9: Land Reservation for Sanjama Community Meeting

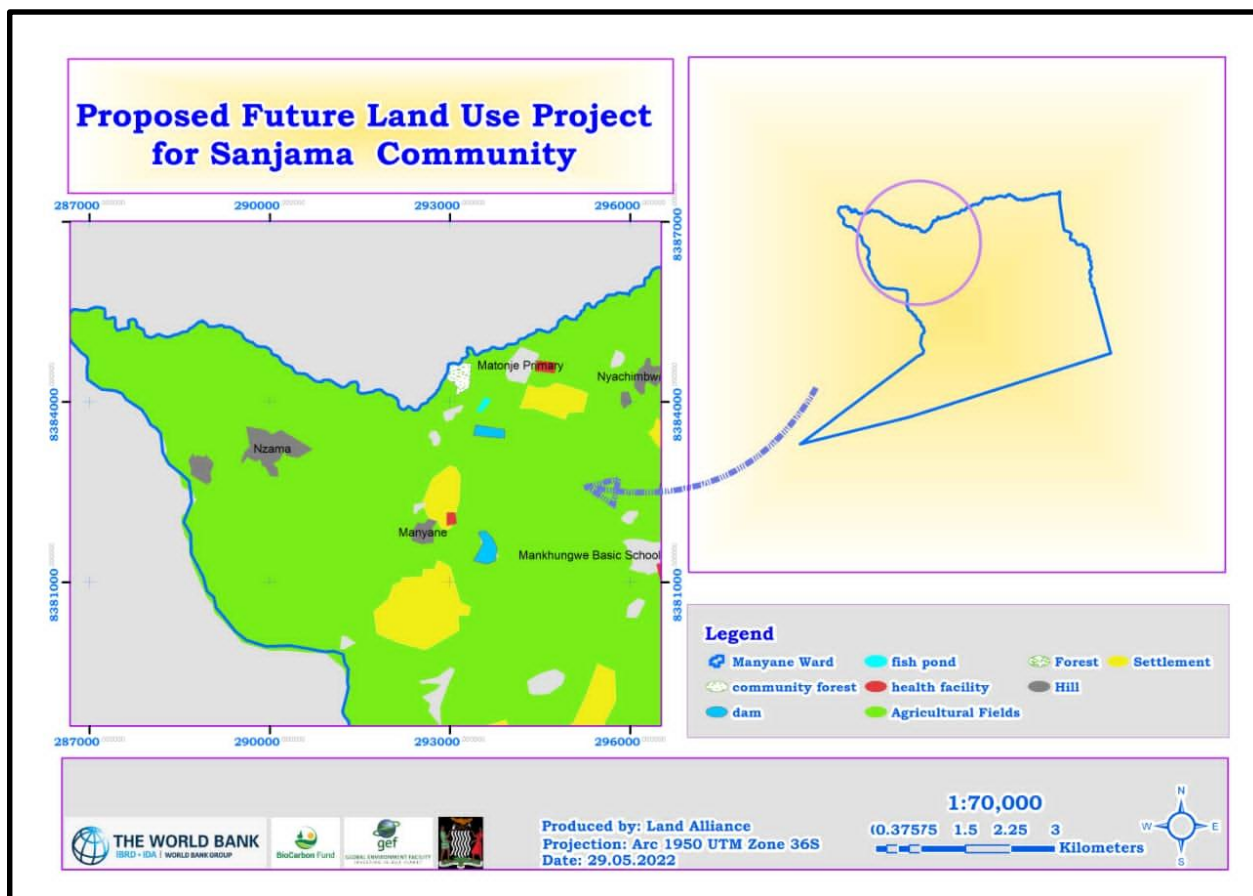


Figure 20: Future Land Use Map for Sanjama Community

7.3 Chizanda Community Meeting

The third validation and zoning meeting was held at Chizanda with a representation of **8** villages (**Zumani, Nyanoka, Chimtenje, Gandisani, Nyakumwa, Naniwe, Nzipula** and **Gideon**). The total number of participants was **33** (16 Male, 17 Female). The community proposed community forest, construction of a dam at Tambombwe stream and a market. The rationale for the proposed development was built on the problems that were identified during the first village meetings conducted in the area as a means of mitigating the effects of climate change and

improving their welfare by identifying alternative sources of livelihood. The table below shows the proposed areas of development and the land coverages:

S/N	Proposed Development	Area (Ha)
1	Forest (Chipungu Hill)	10.16
2	Dam	14.34
3	Market	8.96

Table 10: Land Reservation for Chizanda Community Meeting

The map below shows the proposed developments for the community represented at the Chizanda Community Meeting:

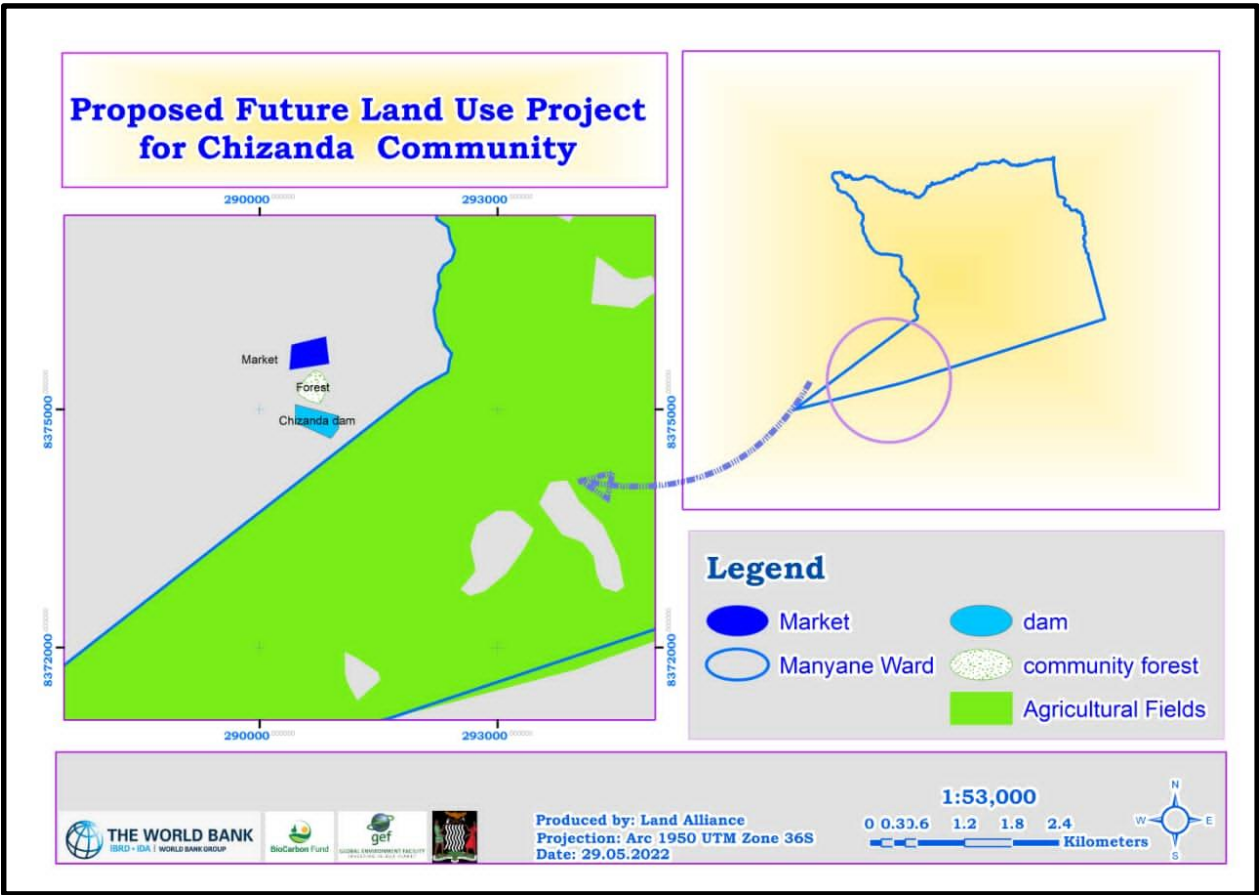


Figure 21: Future Land Use Map for Chizanda Community

7.4 Matonje Community Meeting

The fourth validation and zoning meeting was held at Matonje school with a representation of 8 villages (**Nyankawa, Chibale, Matonje, Nyamwai, Julius Kamphende, Jombo Nsalavu, Nyanza and Kasongo A and B**). The total number of participants was **58** (representing 29 women and 29 men). The community proposed Nyantungwa hill for community forest, proposed the construction of dam at Bvumbwe stream and fish ponds at Chamyumbu and boreholes (Nyamwai and Kasongo villages), Construction of police post at Kasongo village, boarding school and dip tank at Matonje village. A network tower was also proposed at Nyachimbi hills. The rationale on proposed development was built on the problems that were identified during the first village meetings conducted in the area as a means of mitigating the climate change as well as improving their welfare by identifying alternative sources of livelihood. The table below shows the proposed areas of development and the land coverages:

S/N	Proposed Development	Area (Ha)
1	Forest (Nyatungwa)	15.04
2	Dam	8.12
3	Fish Ponds	1.92
4	Police Post	0.88
5	Dip tank	0.48
6	Boarding School	7.76

Table 11: Land Reservation for Matonje Community Meeting

The map below shows the proposed developments for the community represented at the Matonje Community Meeting:

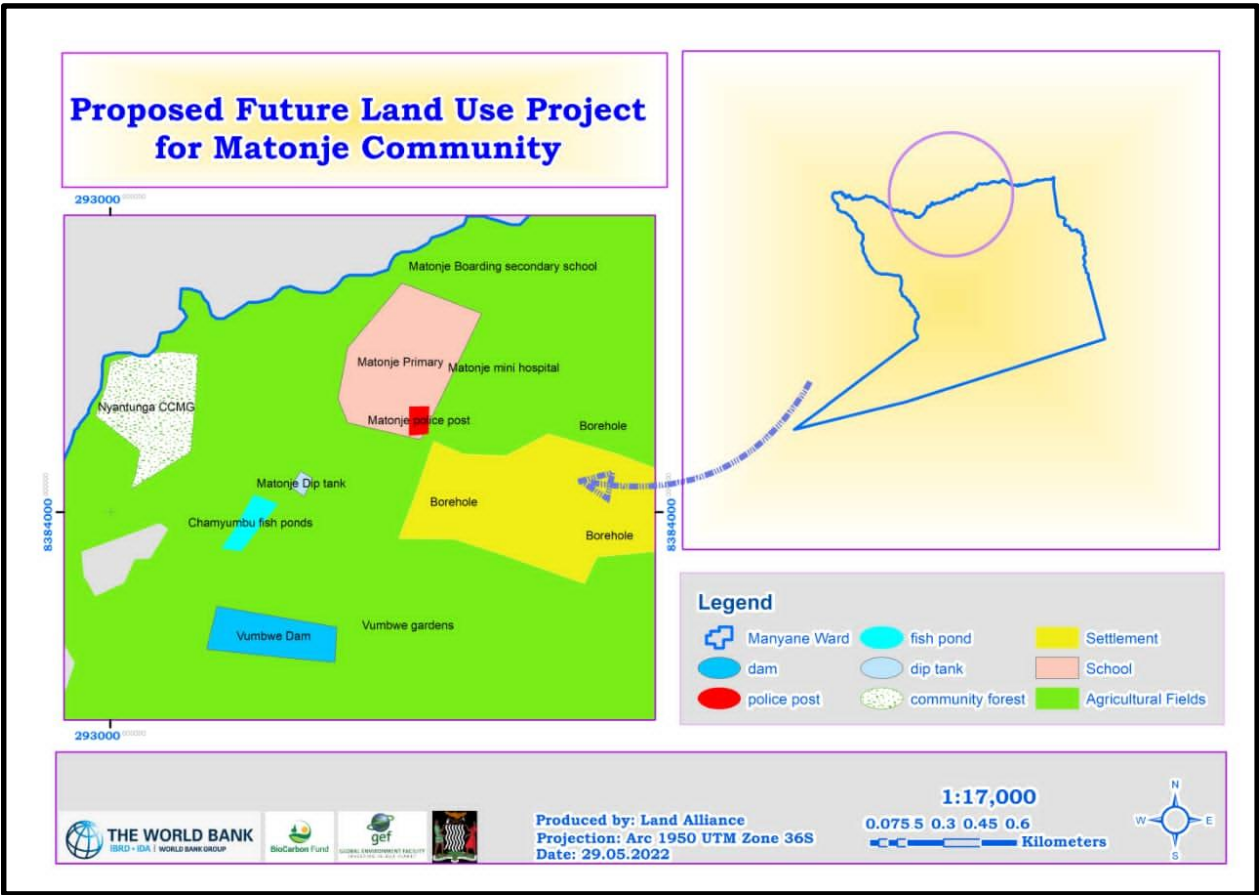


Figure 22: Future Land Use Map for Matonje Community Meeting

8. FRAMEWORK OF THE PLUP AND ENVIRONMENTAL MANAGEMENT PLAN

The environmental assessment of Manyane Ward highlighted the immediate development trends and environmental requirements of the area. Based on that, the PLUP Environmental Management Framework was compiled with the aim of guiding future developmental planning and decision-making processes. However, the potential environmental and social impacts of the PLUP activity are numerous, but mainly positive. Much of the negative impacts may be experienced during implementation of the identified sub-projects (based on the identified core issues within the ward) aiming to provide alternative livelihood sources and helping in mitigating unsustainable natural resource use and management. The specific impacts will be evaluated and distinguished during the preparation of the specific Environmental Management Plans (EMP) based on the identified sub-project investments. Therefore, this PLUP Environmental Management Plan was made with guidance originating from the current land uses and the proposed future land use analysis.

S/N	Aspect	Description	Impact	Mitigation Measure
1	Soil Erosion and Degradation	By the year 2030, the population of both Petauke and Lusangazi will increase to over 410,702 people. Currently the people of Petauke (including Nsimbo ward) are dependent on crops and wood fuel which will increase drastically. That will mean more pollution and more carbon for the forests to deal with, and by 2030 these forests being currently cut down will no longer be there to process the carbon dioxide.	Clearing land for agricultural expansion, settlements, etc. increases the soil erosion potential. Crop cultivation methods have an impact on the soil quantity and quality leading to soil degradation.	<ul style="list-style-type: none"> Strengthen local community participation and commitments, and private sector involvement at both communal and individual farmer level; Adopting and investments in green energy such as the use of energy saving stoves, utilization of solar and wind energy, biogas production from the locally available materials. Controlled bush fires, use of natural pesticides.

2	Habitat Destruction	Clearing of land for agricultural use around water bodies, which leads to drying of streams. Cutting of trees for charcoal production.	Clearing of land for agricultural use around water bodies leads to drying up of streams.	Support tree planting around hills and discourage cultivation along river banks Avoid unnecessary exposure. Restrict indiscriminate cutting down of trees.	
	3	Loss of Fauna	Loss of biodiversity and siltation in the rivers	Destruction of wild fauna habitat due to unsustainable resource management. Potential investments are likely to break ecosystems, isolate species and cut off movements. For example, dams may block the upstream and downstream passage of migrating aquatic animals.	Enhance community sensitization aimed at discouraging communities from cultivating along river banks
					regulate cutting down of trees especially along river banks Undertake forest conservation activities such as community forest management. Encourage communities to come up with water schemes.
4	Air Pollution	Decreased Air Quality	Dust is anticipated during the construction phase of the identified investments as well as from vehicle movements and vehicle emissions are likely to cause air pollution.	Revegetate bare areas Regulate vehicle movements and speed. Monitor and enforce environment management mitigation measures.	

5	Resource Use Conflicts	Sabotage to investments and lack of ownership	Dam construction investments may cause conflict between those with different water needs such as farmers and pastoralists, fishery, household use, etc.	<p>Formulation of by-laws</p> <p>Identify and manage range lands</p> <p>Enforcement of by-laws regulating various investments</p> <p>PLUP development</p> <p>Land use decisions must be inclusive of all users and groups, including women, youths and differently abled people in the area.</p>
6	Loss of Land	Displacement of communities or households and reduced grazing land which can cause conflict	There may be loss of farm and grazing land among others by the local communities owning land to investments projects and forest conservation.	<p>Communities must identify project areas in consultation with their leaders.</p> <hr/> <p>Communities must use Free Prior Informed Consent (FPIC)</p>

Table 12: Environmental Management Plan

9. IMPLEMENTATION STRATEGY

The table below outlines the PLUP Implementation Strategy

Problem	Objectives	Strategy	Output	Indicator
Shortage of Water for Animals and Irrigation	To Improve Access to Water Supply for animals and irrigation	Dam Construction at identified sites	At least 4 dams constructed at Bvumbwe, Sanjama, Chizanda and Matonje	Number of dams constructed.
Inadequate Trading Areas	To promote investment and access to goods and services	Construction of market at identified sites	At least one (1) market constructed at Chizanda	Number of markets constructed
Inadequate Telecommunications Towers	To create connectivity between the rural and urban communities for easy dissemination of information such as COVID prevention and other pandemics	Installation of communication towers by Telecommunication Companies	At least each Telecommunication Company should put up a tower (MTN, Zamtel and Airtel).	Number of communication towers installed
Soil Degradation and Deforestation	To Promote Environmental Protection and Conservation of Natural Resources	Tree planting exercise and promote natural vegetation growth	Plant at least 10,000 trees	Number of trees planted
		Establishment of Community Forests at identified sites	Establish at least 6 Community Forests at Manthungwa, Chimyangulu, Chikanula, Sanjama, Chipungu Hill and Nyanthungwa	Number of Community Forests Established

Poor Agricultural Practices	To promote agricultural productivity.	Adoption of Climate smart Agriculture	At least 75% of local farmers adopt the CSA technique	Percentage adoption of CSA
		Deployment of extension workers	At least 1 extension worker deployed	Number of extension workers deployed
Poor State of Roads and Related Infrastructure	To promote spatial growth and improve transport system	Rehabilitation of roads	Rehabilitate all roads	Number and length (KM) of roads rehabilitated
		Construction of culverts and bridges	Construct culverts and bridges across all streams	Number of culverts and bridges constructed
Inadequate Health Facilities	To increase the number of health facilities	Construction of health facilities at identified sites	Construction of at least two (2) health facilities in Sanjama and Mankhungwe	Number of health facilities constructed
		Construction of health staff houses	At least 6 staff houses (3 per health facility)	Number of staff houses constructed
Long Distances to Schools	To attain a high quality education standard by increasing the number of schools and reducing the teacher to pupil ratio in all schools within the ward	Construction of new classroom blocks	Construct at least 12 classroom blocks in the ward (2 per school)	Number of classroom blocks constructed
		Construction of schools at identified sites	Construct at least 1 school in Matonje	Number of schools constructed
		Construction of teacher and staff houses	Construct at least 12 teacher and staff houses	Number of staff houses constructed

Lack of Alternative Livelihood Sources	To enhance human development through skills training and empowerment programs	Establishment of a skills training centre	At least 1 skills centre established	Number of skills centres established
		Train farmers in fish farming, bee keeping and mushroom conservation Techniques	Train as many people as possible	Number of people trained
		Construction of Fish Ponds at identified sites	At least 4 fish ponds constructed at Matonje, Sanjama, Bvumbwe and Nyansato	Number of Fish ponds constructed
		Establishment of value addition plants	At Least 2 value addition plants established in the ward	Number of value addition plants established

Table 13: PLUP Implementation Plan

9.1 Capital Investment Projects

Priority Projects	Quantity	Unit Cost (K)	Total Cost (K)
Dam Construction	4	TBA	TBA
Construction of health Post	2	500,000	1,000,000
Construction of a school	1	500,000	500,000
Construction of Staff Houses	18	200,000	3,600,000
Roads Rehabilitation	5	TBA	TBA
Construction of classroom blocks	12	450,000	5,400,000

Table 14: Capital Projects Identified

10. INSTITUTIONAL ARRANGEMENT FOR PLAN IMPLEMENTATION

The Local Authorities will play a critical role in supporting the implementation of PLUP in line with the guidelines and provisions of the URP Act No.3 of 2015. The Forestry Department, Department of National Parks and Wildlife and Ministry of Agriculture will be the main implementers of the PLUP while the Ministry of Health, Ministry of Education and other line ministries will be monitoring adherence to the zoning of the land use plan with regards to schools, health facilities and other developmental and social land reserves.

Manyane Ward PLUP is envisaged to be implemented in line with the Petauke/Lusangazi JIDP which is running for a period of 10-years from 2021-2030. Being a local plan, the Traditional Authority will work hand in hand with the DMT team in the implementation process since the plan is part of the Integrated Development Planning framework. The plan also provides an opportunity for the traditional leaders to lobby for support from the government through local authorities e.g. from the Constituency Development Funds (CDF).

At chiefdom level, the traditional authority with guidance from the DMT team will choose community representatives who will be overseeing and executing PLUP activities and will intermittently rehearse with both the DMT and the Chiefs on the implementation process.

The mandate to carry out minor (pilot) measures may in some cases need to be transferred to the civil society (i.e. self-help groups, cooperatives, farmers' organisations or local NGOs). It is also possible that private sector companies or individual consultants take over this part so that

the Government, through DMT, only concentrates on the supervision and monitoring of the process.

11. CONCLUSION

The PLUP for Manyane Ward was developed through a consultative and participatory process, and technically analysed by the Land Alliance Consortium - the TSP hired by ZIFL Project - in consultation with the Petauke/Lusangazi DMT team. Additionally, the PLUP analysed the current situation in Manyane Ward, issues pertaining to Land Use Planning were identified, with lack of alternative sources of livelihood being one of the key drivers of unsustainable natural resources management. At the same time there has been haphazard and unsustainable use of land and other natural resources by residents of Manyane Ward and those residing in surrounding areas largely due to lack of documented rules and regulations governing the use of resources. Therefore, it is hoped that this PLUP will be used for the purpose for which it was developed.

12. GLOSSARY

12.1 Natural Resources

One of the essential and prerequisite activities when embarking on participatory land use planning is understanding the quality and quantity of the land resources. Besides, participatory land use planning forms a basis for obtaining optimum level of production and also helps in introducing appropriate land management practices for better and/or improved livelihoods (Schwedes and Werne, 2010). Therefore, natural resources must be understood as conditions and elements of the land that can be exploited, developed or managed without causing negative impacts that risk the fragile environmental relationships (Negash. 2012). The following are some of the natural resources:

12.1.1 Vegetation

In the context of PLUP, vegetation refers to all plant species that are unsustainably managed and used by communities for any of their land uses. The vegetation is used to mainly fulfil community needs such as gathering firewood, fruits, medicine, poles and also serves as habitats for wild animals. On the other hand, vegetation provides cover for the soil, allows the rainwater to percolate into the ground, and protects the soil from erosion.

12.1.2 Soils

This is one of the key elements across the globe that determines what land can be used for, taking into consideration the physical and chemical properties (FAO, 2006). The soils exert influence in determining the feasibility of land uses and composition of natural communities such as plants, animals, etc of an area. Thus, land use planning may demand a study on physical and chemical conditions, composition, and overall characteristics of soils (GIZ, 2012; Negash, 2012). This is due to the fact that knowing the soil characteristics helps in understanding the past and present land uses and helps in predicting future land use potentials.

12.1.3 Water

This is an essential resource which is required for use by human beings and Wildlife. It is also used for irrigation and navigation by people and by plants to perpetuate, grow and produce

(Mitchell et al, 2004). Besides, the quantity of available water determines the type of land use options and land utilisation types. Thus, the availability and accessibility of water resources in an area determine sustainability and the types of land uses that can be implemented (GIZ, 2012).

12.2 Climate

Climate is one of the factors that affects land use as it is the major agent that determines water balance and dictates the nature and type of natural vegetation in a specific area (Malcolm et al, 2006). Interactions among climate, relief and soils are important in determining socially acceptable, economically viable and environmentally sound land use types (FAO, 1993). The main climatic elements which directly govern land use types to be considered for a certain area are the rainfall amount and distribution and the air temperature level (Negash. 2012). Thus, data on these elements is so important for sustainable local level land use planning processes. The following climatic elements are important factors in determining the land use options of a certain locality or planning area.

12.2.1 Rainfall

The term precipitation includes rainfall, snow and dew. The availability of water through precipitation or rather the lack of it is often the most limiting physical factor in crop and livestock production in areas where water for irrigation is scarce. It's of great importance to know the rainfall patterns of a given area when undertaking any level of land use planning. Besides, the seasonal distribution of rains governs the choice of major land uses, crops and the optimal planting time, harvesting and other farming operations such as land preparation, weeding and threshing (Negash. 2012).

12.3 Land Use Planning

According to Liversage and Mangiafico (2014), land-use planning is the systematic assessment of land and water potential, alternatives for land use and economic and social conditions in order to select and adopt the best land-use options. It's a process of decision making on the use of the resources of a certain unit of land for options of more productivity, environmentally sound and sustainable economic uses (JICA, 2011). However, Negash (2012) argued that decisions on land

use options are based on the analysis of potentials and constraints of the land resources as guided by the competing needs of the communities.

12.4 Participatory Land Use Planning

This is an interactive process in which local communities could discuss and determine how to manage the land and other natural resources in their locality (JICA, 2011). It is based on dialogue among all stakeholders with an aim of making sustainable land use decisions through negotiation (GIZ, 2012). The intention is to form comprehensive land use options based on the quality and quantity of the resources and the needs of the community (PLUP Manual, 2019). The land use plan aims at improving the livelihoods of the existing community and meeting the resource development and administration needs of the future generation (Negash. 2012).

12.5 Livelihood

This can be defined as means and ways of making a living. It encompasses people's capabilities, assets, income and activities required to secure the necessities of life (Mutea et al, 2019). According to Kassa (2018) livelihood is said to be sustainable if it enables people to cope with and recover from shocks and stresses (such as natural disasters and economic or social upheavals) and enhance their well-being and that of future generations without undermining the natural environment or resource base.

Presently, natural resources are overexploited, exceeding the rate at which they are replenished due to the increase in the demands because of high population increase and unsustainable usage (Abu and Soom, 2016). Hence, land use planning is the tool that can well be utilised in order to improve and maximise the usage and management of resources in order to better improve the livelihoods of people. This is because LUP bases its processes on the quantity and quality of resources available that can improve livelihoods and the environment (GIZ, 2012). Thus, decisions are made based on the knowledge of resources by all stakeholders.

13. REFERENCES

1. Petauke/Lusangazi District Joint Integrated Development Plan (JIDP) 2021.
2. JICA 2011. Participatory Land Use Planning: Community Based Natural Resource Management. Available:
<https://www.jica.go.jp/project/english/easttimor/003/index.html>
3. Food and Agriculture Organization (FAO). 1993. Guidelines for Land-Use Planning. Rome, Italy.
4. Liversage, H and Mangiafico, M.E. 2014. How to do Participatory land-use planning: Land tenure toolkit.
5. GIZ. 2012. Land Use Planning: Concept, Tools and Applications. Federal Ministry for Economic Cooperation and Development (BMZ): Eschborn, Germany. p. 268.
6. Ayantoye K, Amao J. O. and Fanifosi G. E. 2017. Determinants of livelihood diversification among rural households in Kwara State, Nigeria.
7. Malcolm, J. R., Liu, C., Neilson, R. P., Hansen, L. & Hannah, L. 2006. Global Warming and Extinctions of Endemic Species from Biodiversity Hotspots.
8. Kassa W.A. 2018. Determinants and challenges of rural livelihood diversification in Ethiopia: Qualitative review. Journal of Agricultural Extension and Rural Development.
9. Mitchell D, Buxton M and Budge T. 2004. Assessing the Role of Land Use Planning in Natural Resource Management. Spatial Planning for Sustainable Development.
10. Schwedes, S and Werne, W. 2010. Ministry of Lands and Resettlement and German Technical Cooperation in the context of the Modelling Land Use Planning Project.
11. Negash, M. 2012. Local Level Participatory Land Use Planning Manual: Concepts and steps in LLPLUP. Ministry of Agriculture Rural Land Administration and Use Directorate.
12. Mutea. E, Bottazzi. P, Jacobi. J, Kiteme. B, Speranza. C.I and Rist. S. 2019. Livelihoods and Food Security Among Rural Households in the North-Western Mount Kenya Region
13. Abu, G. A., and Soom, A. (2016). Analysis of factors affecting food security in rural and urban farming households of Benue State, Nigeria.

14. Shitumbanuma. V, Simfukwe. P, Kalala. D, Kaninga. B, Gondwe. B, Nambala. M, Kabwe. S, Siulemba. G, Kapulu. N, Lungu. O and Mutegi. J. 2014. Integrated Soil Fertility Management in Zambia.
15. FAO (2006). Food security. Policy Brief 2, 1–4.

ANNEXES

Annex 1: Manyane Ward by- Laws on Land Use and Natural Resource Management

Preamble

Having resources identified and zoned is not a guarantee that there will be proper management, hence establishing rules is key to sustainable management of all natural resources. The communities of Manyane ward did not want just to leave things at zoning level but they also formulated by-laws pertaining the use and protection of natural resources that were identified in their community. Traditionally, no one is allowed to give a penalty to the offenders except the chief as he is the custodian of natural resources in the chiefdom.

GOVERNANCE RULES FOR MANYANE WARD

Resource/Development	Rules	Penalty to Offenders
Water Resources	No farming activities around the dam and other water bodies, the buffer zone of 50m shall be applied.	Direct report to HRH Mwanjwanthu. Face the punishment.
	No illegal fishing on the dam.	
	No depositing of poisonous chemicals in the dam.	
	No cutting down of trees around the dam.	
	All gardening activities to be done on one side of the dam to allow animals to have access to water.	
No farming activity to be done around the buffer zone of the dams and streams.		
Forest	No cutting down trees in forest are allowed	Face punishment from HRH Manjwanthu
	No charcoal burning in the forest	
	No cattle grazing in the forest	
	No farming activities in the forest area	
	No fire burning in the forest	
	No fetching of firewood in the forest without permission	

Trading Area	No building of a house in the trading area	The land rights will be revoked by HRH Mwanjawanthu.
	Only the development committee recognised by the chief has the right to allocate plots.	Report to the chief.
	No farming activities are allowed in the trading area.	
Expansion of Agricultural Area	Anyone wishing to expand the field should get consent from the chief.	Any offender shall be reported to the chief for further action.
Hunting	No hunting is allowed in the chieftom.	Any offender shall be reported to the chief for further action.
Telecommunication Towers	No vandalism of Telecommunication Towers.	Inform the chief and report to the police.

Table 15: Offences and Penalties

Annex 2: Meeting Attendance Registers

First Village Meetings

PETAUKE DISTRICT
ATTENDANCE LIST FOR THE PLUP
COMMUNITY MEETING

VENUE: SANJAMA DATE: 21st APRIL 2022

SNO.	NAME	GENDER (M/F)	VILLAGE/DESIGNATION	DISTRICT	CONTACT NO.	EMAIL ADDRESS	SIGNATURE
1	TIKU MUMBA	F	Kaulo	PETAUKE			T. Mumba
2	MARISI SARAZA	F	Kaulo	"			M. Saraza
3	NRAMOSE LUNGU	F	Kaulo	"			N. Ramose
4	DINNER ZULU	F	"	"			D. Dinner
5	ISIXEJALI TEMBO	F	MANJIMBA	"			I. Tembo
6	FLORENCE TEMBO	F	"	"			F. Tembo
7	ELINA MUMBA	F	Kaulo	"			E. Mumba
8	ELIZABETH PHIRI	F	MALIPA	"	0996316052		E. Phiri
9	MARISAT DAKA	F	CHEWZYA	"			M. Daka
10	MARISAT TEMBO	F	Kaulo	"	0967468961		M. Tembo
11	EMELISI PHIRI	F	MALIPA	"	0952 860236		E. Phiri
12	SARA ZULU	F	CHEWZYA	"			S. Zulu
13	THOMAS PHIRI	F	CHEWZYA	"			T. Phiri
14	MARISAT ZULU	F	KABANIKA	"			M. Zulu
15	ALICE ZULU	F	NYAMABENDE	"			A. Zulu
16	MARISAT PHIRI	F	"	"			M. Phiri
17	ELIZABETH ZULU	F	"	"			E. Zulu
18	EMELISI TEMBO	F	"	"			E. Tembo
19	MARISAT ZULU	F	"	"			M. Zulu
20	ALICE LUNGU	F	"	"			A. Lungu
21	AFAZED TEMBO	F	CHEWZYA	"			A. Tembo

PETAUKE DISTRICT
ATTENDANCE LIST FOR THE PLUP
COMMUNITY MEETING

VENUE: Sanjama (School) 2022 DATE: 21/04/2022

SNO.	NAME	GENDER (M/F)	VILLAGE/DESIGNATION	DISTRICT	CONTACT NO.	EMAIL ADDRESS	SIGNATURE
1	ELIDA TEMBO	F	KABANIKA	PETAUKE	0952869903		E. Tembo
2	CATHERINE PHIRI	F	KABANIKA	"	0922096663		C. Phiri
3	REBECCA ZULU	F	MALIPA	"	0953215110		R. Zulu
4	CATHERINE BANJA	F	MANJIMBA	"	0977821117		C. Banja
5	WENDY GUYE	M	SANJAMA School	"	095333957		W. Guye
6	WENDY DAKA	M	Kaulo	"			W. Daka
7	EMELISI DAKA	M	KABANIKA	"	0965 105976		E. Daka
8	THOMAS TEMBO	F	P.T.C	PETAUKE	0952869903		T. Tembo
9	SIEGEB MUMBA	M	T.S.P	PETAUKE	0977821117		S. Mumba
10	MARISAT PHIRI	M	PETAUKE Town Council	PETAUKE	0977821117		M. Phiri
11	Kamboko Saml	F	FORESTRI	PETAUKE	0977821117		K. Saml
12	EMELISI MUMBA	F	PETAUKE town Council	PETAUKE	0977821117		E. Mumba
13	WILSON PHIRI	M	LUSANGAZI Town Council	LUSANGAZI	092213663		W. Phiri
14	NGAMBI BERNARD	M					N. Bernard

PETAUKE DISTRICT
ATTENDANCE LIST FOR THE PLUP
COMMUNITY MEETING

VENUE: SANJAMA DATE: 21/04/22

SNO.	NAME	GENDER (M/F)	VILLAGE/DESIGNATION	DISTRICT	CONTACT NO.	EMAIL ADDRESS	SIGNATURE
1	MILYAMA KUMWETA	F	CHENZYA	PETAUKE			
2	ELINA Zulu	F	"	"			
3	MIMERO PHIRI	F	"	"			
4	MAGRET LUNGU	F	"	"			
5	IKULILEKUNI PHIRI	F	NYAURE	"			
6	CHARITY Zulu	F	MALIMA	"			
7	BENADITA TEMBO	F	NYAURE	"			
8	CHRISTINA TEMBO	F	MANIHIMBI	"			
9	AILELASSI LUNGU	F	"	"			
10	LISA Zulu	F	MBAKALUNGU	"			
11	*YASI DAKA	F	NYAMANHIMBI	"			
12	AILEL PHIRI	F	NYAURE	"			
13	FLORENCE PHIRI	F	MBAKALUNGU	"			
14	LIDIA ISANDA	F	MALIMA	"	0978 977338		
15	RLESINGI PHIRI	F	MALIMA	"	09710115273		
16	RESINA MWANZA	F	KAULO	"			
17	CHARITY TEMBO	F	MBAKALUNGU	"			
18	MUSA Zulu	F	MALIMA	"			
19	OZIRA DAKA	F	MANIHIMBI	"	2979055035		
20	MUSI SAKALA	F	KAULO	"	0953 676360		
21	ESTER DAKA	F	CHENKWE	"	0957 640985		

PETAUKE DISTRICT
ATTENDANCE LIST FOR THE PLUP
COMMUNITY MEETING

VENUE: SANJAMA DATE: 21st APRIL 2022

SNO.	NAME	GENDER (M/F)	VILLAGE/DESIGNATION	DISTRICT	CONTACT NO.	EMAIL ADDRESS	SIGNATURE
1	IRRON PHIRI	M	MALIMA	PETAUKE			
2	IRISA LUNGU	M	MALIMA	PETAUKE	0965 401353		
3	HARRISON TEMBO	M	KAULO	"	0966 257888		
4	IRRON SAKALA	M	"	"			
5	ABRAHAM LUNGU	M	KAULO	PETAUKE	0956 6443301		
6	ENOCK LUNGU	M	KAULO	PETAUKE	0978218000		
7	JOSEPH PHIRI	M	KAULO	PETAUKE	0957506728		
8	CHARIS Zulu	M	KARANIKA	"	0973 627021		
9	SAMSON TEMBO	M	"	"			
11	KANSINGI SAKALA	M	KAULO	"	0954 610565		
12	KLEC PHIRI	F	MALIMA	"			
13	FRANZILA DAKA	F	"	"			
14	ESTER MUMBA	F	MALIMA	"			
15	AFFINA CHIRWA	F	KAULO	"			
16	FLORENCE LUNGU	F	KAULO	"			
17	ELENI SAKALA	F	KAULO	"			
18	IREEN X DAKA	F	NYAMANHIMBI	"			
19	PATRICIA TEMBO	F	"	"			
20	NELYA DAKA	F	KAULO	"			
21	AYELINA LUNGU	F	KAULO	"			
22	JUDITH MWANZA	F	NYAMANHIMBI	"			

PETAUKE DISTRICT
ATTENDANCE LIST FOR THE PLUP
COMMUNITY MEETING

VENUE: SANJAMA DATE: 21st APRIL 2022

SNO.	NAME	GENDER (M/F)	VILLAGE/DESIGNATION	DISTRICT	CONTACT NO.	EMAIL ADDRESS	SIGNATURE
1	FANUEL ZULU	m	MALIMA				
2	THOMAS TEMBO	m	KABANIKA	PETAUKE			
3	BREK TEMBO	m	MAKORA	PETAUKE	097738391		F ZULU
4	WILSON PHIRI	m	MALIMA	PETAUKE	095327627		T. Tembo
5	LYON PHIRI	m	MANIHIMBA	"	753 345732		E. Tembo
6	LEMERANI PHIRI	m	NYAMASENDE	"			PHIRI
7	AVALATI TEMBO	m	NYAMASENDE	"			
8	AZELE MUMBA	m	NYAMAMIMBIH	"			
9	ERSON LUNGU	m	CHENKWE	"			
10	STEPHEN PHIRI	m	MBAKALUNGU	"			A. Zamba
11	HANDREW TEMBO	m	MAKORA	"	0990 652183		
12	CHARLES TEMBO	m	MANIHIMBA	"	0958 805084		
13	DOMINYANO ZULU	m	CHENKWE	"	0957 213533		A. Tembo
14	JOSEPH SAKALA	m	NYAMASENDE	"			Tembo
15	MAUNDAY LUNGU	m	KAULO	"			
16	ASAT LUNGU	m	CHENKWE	"			
17	LOVEMORE LUNGU	m	CHENKWE	"	0970 595615		M. Zamba
18	LUNGISAN ZULU	m	NYAURE	"	0977 432763		Lungu
19	MASIER PHIRI	m	CHANGA	"			
20	SHADRECK MUMBA	m	MALIMA	"			M. P. Tembo
21	EDWIN MUSENDA	m	MALIMA	"			S. Mumba

PETAUKE DISTRICT
ATTENDANCE LIST FOR THE PLUP
COMMUNITY MEETING

VENUE: SANJAMA DATE: 21st APRIL 2022

SNO.	NAME	GENDER (M/F)	VILLAGE/DESIGNATION	DISTRICT	CONTACT NO.	EMAIL ADDRESS	SIGNATURE
1	HARRISON Tembo	m	P.D.L-A	Petauke	0971142401		
2	DAVIDSON DAKA	m	MANIHIMBA	PETAUKE			
3	JACKSON TEMBO	m	"	"	0979 848440		
4	GEOPERS BANDA	m	NYAURE	PETAUKE	0977296026		
5	THEODAS MBEULO	m	KAULO	PETAUKE	0976473720		
6	INDIA PHIRI	m	MANIHIMBA	"			
7	NAD BANDA	m	MALIMA	"	0974493649		
8	LAURENT TEMBO	m	MALIMA	"			
9	EDWIN TEMBO	m	NYAURE	"	0979542674		
10	MWOLWA PHIRI	m	KASAMUKA	"	0974905407		
11	WILSON PHIRI	m	MALIMA	"	0974 777431		
12	YESAYA LUNGU	m	MONGA	"			
13	APION MWANZA	m	KABANIKA	"			
14	SABDO MUMBA	m	MALIMA	"			
15	JOSEPH PHIRI	m	MALIMA	"			S. Mumba
16	HARISON LUNGU	m	MALIMA	"			
17	MARTIN ZULU	m	MALIMA	"			
18	JOSIPA TEMBO	m	MBAKALUNGU	"			
19	KEYSON ZULU	m	MAKORA	"			
20	KICHANIL KAPEL	m	Mabeja	"	09711789004		
21	PETER LUNGU	m	KAULO	"	0772039930		

PETAUKE DISTRICT
ATTENDANCE LIST FOR THE PLUP
COMMUNITY MEETING

VENUE: MANKHUNGWE DATE: 11/04/2022

SNO.	NAME	GENDER (M/F)	VILLAGE/DESIGNATION	DISTRICT	CONTACT NO.	EMAIL ADDRESS	SIGNATURE
107	Kaluba mwanza	F	Jubus	Petauke	0955240059		R. W.
108	Cecilia Zulu	F	mankhungwe	Petauke	0772090662		C. Z.
109	Christina Inyanga	F	nyantalo	Petauke	-		C. Iny.
110	Avanda mwanza	F	malinda	Petauke	-		A. Iny.
111	Ennice phiri	F	nyantalo	Petauke	-		E. Iny.
112	Aleti phiri	F	nyantalo	Petauke	-		A. Iny.
113	Cecilia phiri	F	mankhungwe	Petauke	-		C. Iny.
114	Irywalemi Zulu	F	mankhungwe	Petauke	-		I. Zulu
115	Gradice dala	F	Jubus	Petauke	-		G. dala
116	Elinah tembo	F	mankhungwe	Petauke	0772090376		E. Iny.
117	Alness saxala	F	mankhungwe	Petauke	-		A. Iny.
118	Legmah tembo	F	mankhungwe	Petauke	-		L. Iny.
119	Snya tembo	F	Jubus	Petauke	-		S. Iny.
120	Alice Saxala	F	mankhungwe	Petauke	-		A. Iny.
121	Felistus dala	F	malinda	Petauke	-		F. Iny.
122	Mary tembo	F	mankhungwe	Petauke	-		M. Iny.
123	Mwanta saxala	F	malinda	Petauke	-		M. Iny.
124	Oliver mwanza	F	nyantalo	Petauke	-		O. Iny.
125	Mary Saxala	F	nyantalo	Petauke	-		M. Iny.
126	Kondiasa mwanza	F	mpwalo	Petauke	-		K. Iny.
127	Clituba mumba	F	mankhungwe	Petauke	-		C. Iny.

PETAUKE DISTRICT
ATTENDANCE LIST FOR THE PLUP
COMMUNITY MEETING

VENUE: MANKHUNGWE DATE: 11/04/2022

SNO.	NAME	GENDER (M/F)	VILLAGE/DESIGNATION	DISTRICT	CONTACT NO.	EMAIL ADDRESS	SIGNATURE
128	Magdalena mumba	F	mankhungwe	Petauke	-		M. Iny.
129	Atelesi saxala	F	mankhungwe	Petauke	-		A. Iny.
130	Joyce tembo	F	mankhungwe	Petauke	-		J. Iny.
131	Naomi Inyanga	F	mankhungwe	Petauke	-		N. Iny.
132	Cathleen saxala	F	mankhungwe	Petauke	-		C. Iny.
133	Alice tembo	F	mankhungwe	Petauke	-		A. Iny.
134	Grace phiri	F	mankhungwe	Petauke	-		G. Iny.
135	Zeliza tembo	F	mankhungwe	Petauke	-		Z. Iny.
136	Rosemary phiri	F	malinda	Petauke	-		R. Iny.
137	Chiteya mumba	F	mankhungwe	Petauke	-		C. Iny.
138	Lanzi mwanza	F	mankhungwe	Petauke	-		L. Iny.
139	Mary tembo	F	mankhungwe	Petauke	0973861561		M. Iny.
140	Yulu mumba	M	mankhungwe	Petauke	0979640394		Y. Iny.
141	Bicly Inyanga	M	Jubus	Petauke	0971433941		B. Iny.
142	Alick phiri	M	mankhungwe	Petauke	-		A. Iny.
143	Rodrick tembo	M	Jubus	Petauke	096415597		R. Iny.
144	Benson tembo	M	Jubus	Petauke	0974193953		B. Iny.
145	Julius mumba	M	Jubus	Petauke	0975214109		J. Iny.
146	Mwanza Gaston	M	Jubus	Petauke	0964094078		M. Iny.
147	Knox phumbela	M	mankhungwe	Petauke	0977173632		K. Iny.
148	Paul phiri	M	mankhungwe	Petauke	-		P. Iny.

PETAUKE DISTRICT
ATTENDANCE LIST FOR THE PLUP
COMMUNITY MEETING

VENUE: Manklungwe DATE: 11/04/2022

SNO.	NAME	GENDER (M/F)	VILLAGE/DESIGNATION	DISTRICT	CONTACT NO.	EMAIL ADDRESS	SIGNATURE
86	Keshas daka	M	mpwalo	petanke	0971085655		R. daka
87	Istom daka	M	manklungwe	petanke	-		I. daka
88	Andlex phiri	M	manklungwe	petanke	-		A. phiri
89	Stephen phiri	M	manklungwe	petanke	097600930		S. phiri
90	Chipanya Daka	M	manklungwe	petanke	-		C. daka
91	Tembo Santos	M	manklungwe	petanke	097054250		S. Santos
92	Tembo Daliso	M	manklungwe	petanke	097743341		D. daliso
93	Emelina daka	F	manklungwe	petanke	-		E. daka
94	Libiana mumba	F	manklungwe	petanke	-		L. mumba
95	Rabbecc mumba	F	manklungwe	petanke	-		R. mumba
96	Judith phiri	F	manklungwe	petanke	-		J. phiri
97	Grace saxala	F	manklungwe	petanke	-		G. saxala
98	Patricia banda	F	manklungwe	petanke	-		P. banda
99	Edina mumba	F	manklungwe	petanke	-		E. mumba
100	mebo kamanga	F	manklungwe	petanke	-		M. kamanga
101	Yelonica mwanza	F	manklungwe	petanke	-		Y. mwanza
102	Ailini mwale	F	manklungwe	petanke	-		A. mwale
103	Ansia tembo	F	manklungwe	petanke	-		A. tembo
104	Eliza daka	F	manklungwe	petanke	-		E. daka
105	Fsther tembo	F	Juhus	petanke	-		F. tembo
106	Nyawa mwanza	F	Juhus	petanke	-		N. mwanza

PETAUKE DISTRICT
ATTENDANCE LIST FOR THE PLUP
COMMUNITY MEETING

VENUE: DATE:

SNO.	NAME	GENDER (M/F)	VILLAGE/DESIGNATION	DISTRICT	CONTACT NO.	EMAIL ADDRESS	SIGNATURE
65	Patricia mwanza	F	Juhus	petanke	-		P. mwanza
66	Emelia saxala	F	Juhus	petanke	-		E. saxala
67	philimon banda	M	manklungwe	petanke	0953070602		P. banda
68	Fabran mwanza	M	ntambalika	petanke	09777584070		F. mwanza
69	Pieren tembo	M	Juhus	petanke	0776169602		P. tembo
70	Allan saxala	M	mpwalo	petanke	0979973899		A. saxala
71	Mabvuto mbewe	M	nyamitongo	petanke	0770345958		M. mbewe
72	Samson ngulube	M	Juhus	petanke	0770756076		S. ngulube
73	Abraham saxala	M	mpwalo	petanke	0957641636		A. saxala
74	Nsangu banda	M	manklungwe	petanke	0961551179		N. banda
75	Joseph saxala	M	manklungwe	petanke	0954632216		J. saxala
76	Weluzani phiri	M	mpwalo	petanke	0955843590		W. phiri
77	Morris Zulu	M	nyantalo	petanke	-		M. Zulu
78	John moyo	M	nyantalo	petanke	-		J. moyo
79	Vilipo banda	M	mpwalo	petanke	-		V. banda
80	Frank saxala	M	manklungwe	petanke	096768937		F. saxala
81	Josias mwanza	M	manklungwe	petanke	-		J. mwanza
82	Oscar yambuto	M	manklungwe	petanke	0953124499		O. yambuto
83	Landiani daka	M	manklungwe	petanke	0953071860		L. daka
84	Musa tembo	M	manklungwe	petanke	-		M. tembo
85	Invensio Zulu	M	manklungwe	petanke	-		I. Zulu

PETAUKE DISTRICT
ATTENDANCE LIST FOR THE PLUP
COMMUNITY MEETING

VENUE: DATE:

SNO.	NAME	GENDER (M/F)	VILLAGE/DESIGNATION	DISTRICT	CONTACT NO.	EMAIL ADDRESS	SIGNATURE
44	Kaluba Tembo	F	manxhugwe	petauke	-		Kabu
45	Sabina Tembo	F	ntambalika	petauke	-		A. Tembo
46	Jenipher Saxala	F	Julus	petauke	-		J. Saxala
47	Ennice Inga	F	manxhugwe	petauke	-		Ennice
48	Annale Mumba	F	manxhugwe	petauke	-		Annale
49	Cathreen Mumba	F	manxhugwe	petauke	-		Cathreen
50	Diness Inga	F	manxhugwe	petauke	-		Diness
51	Mwape Inga	F	manxhugwe	petauke	0966664477		Mwape
52	Matildah Tembo	F	manxhugwe	petauke	-		Matildah
53	Istah Banda	F	manxhugwe	petauke	0962596306		Istah
54	Christina Mumba	F	manxhugwe	petauke	-		Christina
55	Agness Tembo	F	manxhugwe	petauke	-		Agness
56	Juhana Phiri	F	manxhugwe	petauke	-		Juhana
57	Edah Saxala	F	manxhugwe	petauke	-		Edah
58	Nkhumbwi Daka	F	manxhugwe	petauke	-		Nkhumbwi
59	Ngoza Mumba	F	manxhugwe	petauke	-		Ngoza
60	Christyne Tembo	F	manxhugwe	petauke	-		Christyne
61	Tomandah Tembo	F	manxhugwe	petauke	-		Tomandah
62	Jemisher Mwanza	F	manxhugwe	petauke	0955546718		Jemisher
63	Judith Mwanza	F	Julus	petauke	-		Judith
64	Esther Daka	F	Julus	petauke	-		Esther

PETAUKE DISTRICT
ATTENDANCE LIST FOR THE PLUP
COMMUNITY MEETING

VENUE: DATE:

SNO.	NAME	GENDER (M/F)	VILLAGE/DESIGNATION	DISTRICT	CONTACT NO.	EMAIL ADDRESS	SIGNATURE
22	Jephtah Phiri	M	manxhugwe	petauke	-		J.P
23	Agness Daka	F	manxhugwe	petauke	-		A. Daka
24	Hellen Tembo	F	mulinda	petauke	-		H. Tembo
25	Josphat Phiri	M	Julus	petauke	0953249816		J. Phiri
26	Chande Zulu	M	nyamlongo	petauke	0955625509		C. Zulu
27	Michael Phiri	M	nyantalo	petauke	0954648000		M. Phiri
28	Kephas Mwanza	M	ntambalika	petauke	-		K. Mwanza
29	Besam Mumba	M	Julus	petauke	-		B. Mumba
30	Ailack Zulu	M	Julus	petauke	-		A. Zulu
31	Adam Banda	M	mulinda	petauke	-		A. Banda
32	Viness Mwanza	F	Julus	petauke	-		V. Mwanza
33	Esther Saxala	F	Julus	petauke	-		E. Saxala
34	Lia Banda	F	Julus	petauke	-		L. Banda
35	Aliness Mwanza	F	Julus	petauke	-		A. Mwanza
36	Nyawa Mwanza	F	Julus	petauke	-		N. Mwanza
37	Nyawa Mwanza	F	Julus	petauke	-		N. Mwanza
38	Esneya Inga	F	mulinda	petauke	-		E. Inga
39	Lenasia Tembo	F	manxhugwe	petauke	-		L. Tembo
40	Alice Phiri	F	mulinda	petauke	-		A. Phiri
41	Esther Mwanza	F	mulinda	petauke	-		E. Mwanza
42	Justina Mwanza	F	mulinda	petauke	0955949505		J. Mwanza
43	Mervis Inga	F	ntambalika	petauke	-		Mervis

PETAUKE DISTRICT
ATTENDANCE LIST FOR THE PLUP
COMMUNITY MEETING

VENUE: MANKHUNGWE DATE: 11.04.2022

SNO.	NAME	GENDER (M/F)	VILLAGE/DESIGNATION	DISTRICT	CONTACT NO.	EMAIL ADDRESS	SIGNATURE
1	SHADRECK Zulu	M	mankhungwe	Petauke	0973861561		Zulu
2	Edson Inyanga	M	mankhungwe	Petauke	0970622322		E. Lunga
3	Simon DAKA	M	mankhungwe	Petauke	096101634		Daka
4	Rabson BANDA	M	ntambalika	Petauke	0950029597		Rabson
5	Gibson Sakala	M	mankhungwe	Petauke	0953735667		Gibson
6	menyani Inyanga	M	Inyanga	Petauke	0973959402		Inyanga
7	Lemekani mwanza	M	mankhungwe	Petauke	096245674		Lemekani
8	Michael Tembo	M	Inyanga	Petauke	097245674		P. Daka
9	patrick DAKA	M	mankhungwe	Petauke	097577394		M. phiri
10	Morgan phiri	M	Kapindo	Petauke	0956		P. Zulu
11	Primala Zulu	M	Kapindo	Petauke	0953502916		J. mumba
12	Joseph mumba	M	Abram	Petauke	-		A. mumba
13	ACKLUS mwanza	M	Kamono	Petauke	-		K. ngulube
14	Kampata ngulube	M	mankhungwe	Petauke	0954602759		S. phiri
15	Shadreck phiri	M	mpwalo	Petauke	-		P. DAKA
16	patrick DAKA	M	mankhungwe	Petauke	-		S. Inyanga
17	Christina Inyanga	F	mulinda	Petauke	-		C. Sakala
18	Charity Sakala	F	mankhungwe	Petauke	-		R. DAKA
19	Rosemary DAKA	F	Nyamibongo	Petauke	-		P. Inyanga
20	paul Inyanga	M	mankhungwe	Petauke	-		A. Inyanga
21	ACKINA Inyanga	F	Kamono K	Petauke	-		

PETAUKE DISTRICT
ATTENDANCE LIST FOR THE PLUP
COMMUNITY MEETING

VENUE: DATE:

SNO.	NAME	GENDER (M/F)	VILLAGE/DESIGNATION	DISTRICT	CONTACT NO.	EMAIL ADDRESS	SIGNATURE
149	Iackson Inyanga	M	mankhungwe	Petauke	-		I. Inyanga
150	Kamwavi Tembalo	M	Inyanga	Petauke	097273022		R. Inyanga
151	Kennedy Inyanga	M	mankhungwe	Petauke	-		K. Inyanga
152	Ingasio mwalu	M	mulinda	Petauke	0975018259		J. Inyanga
153	Sarali Tembalo	M	mankhungwe	Petauke	-		S. Tembalo
154	Inyanga Gibson	M	ntambalika	Petauke	095133772		Inyanga
155	Moffat Tembalo	M	ntambalika	Petauke	0956224-		M. Tembalo
156	Fadalese Inyanga	F	mankhungwe	Petauke	-		F. Tembalo
157	Felesia mumba	F	mankhungwe	Petauke	-		A. Inyanga
158	Ailini Inyanga	F	mankhungwe	Petauke	-		S. S.
159	Sebo Sakala	F	ntambalika	Petauke	-		M. Inyanga
160	ngawa Inyanga	F	ntambalika	Petauke	-		M. Daka
161	Margret DAKA	F	ntambalika	Petauke	-		E. Zulu
162	Elizabeth Zulu	F	ntambalika	Petauke	-		H. Tembalo
163	Alness Tembalo	F	mankhungwe	Petauke	-		C. Tembalo
164	Cecilia Tembalo	F	mankhungwe	Petauke	-		H. phiri
165	Agness phiri	F	mankhungwe	Petauke	-		H. Inyanga
166	Aifosi Inyanga	M	Inyanga	Petauke	-		N. Zulu
167	Nelia Zulu	F	ntambalika	Petauke	-		B. mumba
168	Brenda mumba	F	mulinda	Petauke	0970652799		M. mumba
169	Margret mwanza	F	Inyanga	Petauke	-		

170 Inbela tembo m ntambalika
 (171) mwaba tembo m mankhungwe
 172 Nereis tembo m mankhungwe
 173 phiri Clitele m ntambalika
 174 Tembo levison m ntambalika
 175 Blackson tembo m mpwalo
 176 Florence tembo F mpwalo
 177 Pium saxala F Julius
 178 Precious mwanza F ntambalika
 179 Grace mwanza F ntambalika
 180 Phaides hnyu F Julius
 181 Rosemary hnyu F Julius
 182 Godfrey mumba m Julius
 183 Acklas mwanza m Julius
 184 Peter saxala m ntambalika
 185 Peter phiri m mankhungwe
 186 Given tembo F mankhungwe
 187 Selina banda F mankhungwe
 188 nyangu mumba F mankhungwe
 189 Alinesa saxala F mankhungwe
 200 Kambohe Saul M Petauke Town Council

PETAUKE DISTRICT

**ATTENDANCE LIST FOR THE PLUP
 COMMUNITY MEETING**

VENUE: CHIRANDA DATE: 12/04/22

SNO.	NAME	GENDER (M/F)	VILLAGE/DESIGNATION	DISTRICT	CONTACT NO.	EMAIL ADDRESS	SIGNATURE
1	ANGISHEFI PHIRI	M	CHIMIENJE	PETAUKE	0970737003	—	A. Phiri
2	STACKSON MWANZA	M	GIDION	PETAUKE	0977658795	—	S. mwanza
3	LUNGISA SAKALA	M	NYAKUMKA	PETAUKE	—	—	L. Sakala
4	MAUNDU ZULU	M	NANIKWE	PETAUKE	0761942090	—	M. Zulu
5	JACKSON ZULU	M	GIDION	PETAUKE	0975232574	—	T. Zulu
6	PENGESANI TEMBO	M	CHIMIENJE	PETAUKE	—	—	P. Tembo
7	SULVSTER ZULU	M	CHIMIENJE	PETAUKE	—	—	S. Zulu
8	KAMAXGA MWANZA	M	ZUMANI	PETAUKE	—	—	K. mwanza
9	SIZA PHIRI	M	ZUMANI	PETAUKE	—	—	S. phiri
10	AARON PHIRI	M	GADISAN	PETAUKE	0950520575	—	A. Phiri
11	LAMECK MUMBA	M	NANIKWE	PETAUKE	—	—	L. Mumba
12	PETROS LAMBA	M	NYAKUMKA	PETAUKE	0954616091	—	P. Lamba
13	SHUPA TEMBO	M	GIDION	PETAUKE	—	—	S. Tembo
14	ASTON MWANZA	M	NANIKWE	PETAUKE	—	—	A. Mwanza
15	TEMBO TETAKANI	M	GIDION	PETAUKE	0970544296	—	T. Tembo
16	ZULU AZELE	M	GAMBISAN	PETAUKE	—	—	Z. Zulu
17	IMWELL NJOBVA	M	MZIPALA	PETAUKE	0950553019	—	I. Njobva
18	PAYANI NJOBVA	M	NYAKUMKA	PETAUKE	09550806539	—	P. Njobva
17	PONSIANO BABA	M	CHIMIENJE	PETAUKE	095303025	—	P. Baba
20	KONDWELAN PHIRI	M	GIDION	PETAUKE	0953518057	—	K. Phiri
21	SIAPBORT MUMBA	M	GIDION	PETAUKE	0953104982	—	S. Mumba

PETAUKE DISTRICT
ATTENDANCE LIST FOR THE PLUP
COMMUNITY MEETING

VENUE: CHIZAIDA DATE: 12/04/22

SNO.	NAME	GENDER (M/F)	VILLAGE/DESIGNATION	DISTRICT	CONTACT NO.	EMAIL ADDRESS	SIGNATURE
22	MABUYO ZULU	M	GIBION	PETAUKE	0953336182	-	M Zulu
23	MAZI ZUKA ZULU	M	CHIMTENJE	PETAUKE	-	-	M Zulu
24	LEMEKANI BAWBA	M	MZIPULA	PETAUKE	-	-	L BAWBA
25	PLAYSON ZULU	M	CHIMTENJE	PETAUKE	-	-	P. Zulu
26	MAMBO PHIRI	M	GANDISANI	PETAUKE	-	-	M PHIRI
27	ISAAC DAKA	M	GANDISANI	PETAUKE	0955969205	-	I - DAKA
28	AVALATI MWANZA	M	NAXIWE	PETAUKE	-	-	A. MWANZA
29	IBACK SAKALA	M	GIBION	PETAUKE	-	-	I. SAKALA
30	FACKSONI TEMBO	M	GANDISANI	PETAUKE	-	-	F TEMBO
31	HANSON MWANZA	M	GANDISANI	PETAUKE	-	-	H. MWANZA
32	MOFATI MWANZA	M	CHIMTENJE	PETAUKE	0929231423	-	M. MWANZA
33	JAMES PHIRI	M	GIBION	PETAUKE	-	-	J PHIRI
34	HANDLEX LUNGU	M	GANDISANI	PETAUKE	-	-	H LUNGU
35	ACKIM ZULU	M	GIBION	PETAUKE	-	-	A. Zulu
36	JAMES PHIRI	M	GIBION	PETAUKE	-	-	J. PHIRI
37	IAIAS TEMBO	M	GANDISANI	PETAUKE	-	-	I TEMBO
38	MOSES PHIRI	M	GIBION	PETAUKE	-	-	M PHIRI
39	EDISON SAKALA	M	NAXIWE	PETAUKE	-	-	E. SAKALA
40	PETER MUMBA	M	CHIMTENJE	PETAUKE	-	-	P Mumba
41	BUSA DAKA	M	MZIPULA	PETAUKE	-	-	B. DAKA
42	PETER PHIRI	M	MZIPULA	PETAUKE	-	-	P. Phiri

PETAUKE DISTRICT
ATTENDANCE LIST FOR THE PLUP
COMMUNITY MEETING

VENUE: CHIZAIDA DATE: 12/04/22

SNO.	NAME	GENDER (M/F)	VILLAGE/DESIGNATION	DISTRICT	CONTACT NO.	EMAIL ADDRESS	SIGNATURE
43	MWANZA DENESI	M	CHIMTENJE	PETAUKE	0956968287	-	D. Mwanza
44	KEPHACE PHIRI	M	ZUMANI	PETAUKE	0954106999	-	K. Phiri
45	MOSES SAKALA	M	NYAKUMWA	PETAUKE	0966324819	-	M. SAKALA
46	ANDASON TEMBO	M	CHIMTENJE	PETAUKE	-	-	A. TEMBO
47	RABSON PHIRI	M	GIBION	PETAUKE	095748809	-	R. Phiri
48	IBAN LUNGU	M	CHIMTENJE	PETAUKE	-	-	I. Lungu
49	BRACKSON TEMBO	M	GANDISANI	PETAUKE	0956341333	-	B. TEMBO
50	GEORGEY PHIRI	M	CHIMTENJE	PETAUKE	0955552513	-	G. Phiri
51	BLASKO SAKALA	M	NYANOKA	PETAUKE	0954552534	-	B. SAKALA
52	KEPHACE ZULU	M	GIBION	PETAUKE	0974562392	-	K. Zulu
53	PETER PHIRI	M	ZUMANI	PETAUKE	0973057563	-	P. Phiri
54	BLADON ZULU	M	GIBION	PETAUKE	-	-	B. Zulu
55	ZULU GOBWALE	M	GIBION	PETAUKE	-	-	Z. Zulu
56	MABUYO SAKALA	M	MZIPULA	PETAUKE	-	-	M. SAKALA
57	LAMECK ZULU	M	GIBION	PETAUKE	0955682143	-	L. Zulu
58	ADSONI MWANZA	M	CHIMTENJE	PETAUKE	-	-	A. MWANZA
59	SPESHA PHIRI	M	CHIMTENJE	PETAUKE	-	-	S. Phiri
60	ALICK SAKALA	M	GANDISANI	PETAUKE	-	-	A. SAKALA
61	LOCK TEMBO	M	NYANEMA	PETAUKE	-	-	L. TEMBO
62	DIYELG DAKA	M	CHIMTENJE	PETAUKE	-	-	D. DAKA
63	ANDFORB LUNGU	M	NYAKUMWA	PETAUKE	-	-	A. Lungu

PETAUKE DISTRICT
ATTENDANCE LIST FOR THE PLUP
COMMUNITY MEETING

VENUE: CHIZANOVA DATE: 12/04/22

SNO.	NAME	GENDER (M/F)	VILLAGE/DESIGNATION	DISTRICT	CONTACT NO.	EMAIL ADDRESS	SIGNATURE
64	JACKSON PHIRI	M	GANDISANI	PETAUKE	097869239	-	[Signature]
65	ADAM BANDA	M	INYUTA	PETAUKE		-	[Signature]
66	ISAAC ZULU	M	NYAKUMWA	PETAUKE	0979707050	-	I. Zulu
67	Alback K Teub Headman	M	Gandisani	PETAUKE	0966038450	-	[Signature]
68	SHUTASI Zulu	M	NYANOKA	PETAUKE	0972831877	-	[Signature]
69	ACKSON Zulu	M	ZUMANI	PETAUKE	0970545612	-	A. Zulu
70	ALFRED MURIBA	M	GIDION	PETAUKE	0975700535	-	[Signature]
71	MAJOR MWANZA	M	GIDION	PETAUKE	0953305811	-	[Signature]
72	PREBY Zulu	M	CHITENJE	PETAUKE	0953078284	-	P. Zulu
73	LAI FORD Zulu	M	GANDISANI	PETAUKE	09722914736	-	[Signature]
74	KALENGO BANDA	M	CHITENJE	PETAUKE	0953217895	-	K. Banda
75	TEMBO MOYO	M	GIDION	PETAUKE	0957029459	-	T. Moyo
76	INOCK Zulu	M	GIDION	PETAUKE		-	I. Zulu
77	TEMBO MZIPULA	M	MZIPULA	PETAUKE		-	M. Tembo
78	LUNGU ACKSAD	M	NYAKUMWA	PETAUKE	0957643557	-	A. Lungu
77	KANDIGO SAKALA	M	GANDISANI	PETAUKE	0970984355	-	K. Sakala
80	TENSON Zulu	M	GIDION	PETAUKE		-	[Signature]
81	STANDI WEL PHIRI	M	MZIPULA	PETAUKE	0953529082	-	[Signature]
82	LAI FORD MWANZA	M	GIDION	PETAUKE		-	[Signature]
83	AKLEN PHIRI	M	NYANOKA	PETAUKE	0978636129	-	[Signature]
84	LUNGU KAUXOE	M	NYANOKA	PETAUKE	0974756752	-	[Signature]

PETAUKE DISTRICT
ATTENDANCE LIST FOR THE PLUP
COMMUNITY MEETING

VENUE: DATE:

SNO.	NAME	GENDER (M/F)	VILLAGE/DESIGNATION	DISTRICT	CONTACT NO.	EMAIL ADDRESS	SIGNATURE
85	DOREEN Zulu	F	GIDION	PETAUKE			
86	KEBUNI SAKALA	F	GIDION	PETAUKE			
87	JUDITH SAKALA	F	GIDION	PETAUKE			
88	MADALENA PHIRI	F	GIDION	PETAUKE			
89	TAVYALILE PHIRI	F	CHITENJE	PETAUKE			
90	EDA MWANZA	F	INYUTA	PETAUKE			
91	NANIGMI MWANZA	F	INYUTA	PETAUKE			
92	ESNANT MUMBA	F	NYAKUMWA	PETAUKE			
93	MARIA TEMBO	F	NYAKUMWA	PETAUKE			
94	ESTA TEMBO	F	CHITENJE	PETAUKE			
95	MAGLET DAKA	F	CHITENJE	PETAUKE			
96	ELINA DAKA	F	GANDISANI	PETAUKE			
97	MALILA MWAZA	F	INYUTA	PETAUKE			
98							
99							
100							

PETAUKE DISTRICT
ATTENDANCE LIST FOR THE PLUP
COMMUNITY MEETING

VENUE: DATE:

SNO.	NAME	GENDER (M/F)	VILLAGE/DESIGNATION	DISTRICT	CONTACT NO.	EMAIL ADDRESS	SIGNATURE
101	FALES JOBVU	F	ZIPULA	PETAUKE			
102	ENES MUMBA	F	ZIPULA	PETAUKE			
103	CHARRET SAKALA	F	ZIPULA	PETAUKE			
104	AFALED DAKA	F	GANDISAN	PETAUKE			
105	CHOKHILISINA MWANZA	F	INUTA	PETAUKE			
106	ACKLINA ZULU	F	GANDISAN	PETAUKE			
107	LEKESIN TEMBO	F	NYANEMA	PETAUKE			
108	MALINET MWANZA	F	INUTA	PETAUKE			
109	ALISI TEMBO	F	INUTA	PETAUKE			
110	AJETINA MWANZA	F	CHITENSE	PETAUKE			
112	ASINELI ZULU	F	CHITENSE	PETAUKE			
113	MUNYADE ZULU	F	CHITENSE	PETAUKE			
114	GLESU PHIRI	F	NYANEMA	PETAUKE			
115	KESILIN PHIRI	F	NYANOK	PETAUKE			
116	MAGLET TEMBO	F	ZUMAN	PETAUKE			
117	TISALE TEMBO	F	NYANEMA	PETAUKE			
118	CHELINA ZULU	F	CHITENSE	PETAUKE			
119	CHILUBA ZULU	F	CHITENSE	PETAUKE			
120	LOICE TEMBO	F	ZIPULA	PETAUKE			
121	MAGLET MWANZA	F	ZIPULA	PETAUKE			
122	AYELINA ZULU	F	NYANEMA	PETAUKE			

PETAUKE DISTRICT
ATTENDANCE LIST FOR THE PLUP
COMMUNITY MEETING

VENUE: DATE:

SNO.	NAME	GENDER (M/F)	VILLAGE/DESIGNATION	DISTRICT	CONTACT NO.	EMAIL ADDRESS	SIGNATURE
	ZULU MELI	F	INUTA	PETAUKE			
	LAVINES PHIRI	F	INUTA	PETAUKE			
	SOFIA MUMBA	F	CHITENSE	PETAUKE			
	MWANIDA ZULU	F	GANDISAN	PETAUKE			
	JOICE MUMBA	F	GANDISAN	PETAUKE			
	AINELI PHIRI	F	GINDI	PETAUKE			
	JOICE TEMBO	F	INUTA	PETAUKE			
	LECHO ZULU	F	ZIPULA	PETAUKE			
	CHIKALABA ZULU	F	INUTA	PETAUKE			
	FELIDA TEMBO	F	INUTA	PETAUKE			
	AYELINA MWANZA	F	INUTA	PETAUKE			
	ACKLINA TEMBO	F	ZIPULA	PETAUKE			
	JOICE PHIRI	F	CHITENSE	PETAUKE			
	EMELIA PHIRI	F	CHITENSE	PETAUKE			
	NAWOMI TEMBO	F	NYAKUMWA	PETAUKE			
	LAYZI DAKA	F	GANDISAN	PETAUKE			
	BESINAI ZULU	F	GANDISAN	PETAUKE			
	ALENIA MWANZA	F	GANDISAN	PETAUKE			
	TASILA PHIRI	F	NYAKUMWA	PETAUKE			
	JUDITH PHIRI ZULU	F	ZUMAN	PETAUKE			
	PULICA MUMBA	F	ZUMAN	PETAUKE			

PETAUKE DISTRICT
ATTENDANCE LIST FOR THE PLUP
COMMUNITY MEETING

VENUE: DATE:

SNO.	NAME	GENDER (M/F)	VILLAGE/DESIGNATION	DISTRICT	CONTACT NO.	EMAIL ADDRESS	SIGNATURE
	GLECE TEMBO	F	CHITENJE	PETAUKE			
	AILES BANDA	F	CHITENJE	PETAUKE			
	JENIPHA LUNGU	F	GANDISAN	PETAUKE			
	MELI MWANZA	F	GANDISAN	PETAUKE			
	FALES LUNGU	F	GINDI	PETAUKE			
	DOLA MWANZA	F	NYAKUMWA	PETAUKE			
	A TELEDI MWANZA	F	ZUMAN	PETAUKE			
	TIKABE TEMBO	F	ZUMAN	PETAUKE			
	AFELIDA MUMBA	F	GINDI	PETAUKE			
	ATINEL MUMBA	F	ZUMAN	PETAUKE			
	VAILET BANDA	F	GANDISAN	PETAUKE			
	ETINALA TEMBO	F	NYANOKA	PETAUKE			
	EATINES MWANZA	F	CHITENJE	PETAUKE			
	AILIN DAKA	F	CHITENJE	PETAUKE			
	TJAMENJI MWANZA	F	ZIPULA	PETAUKE			
	MALIGO ZULU	F	GANDISAN	PETAUKE			
	MUSALEPO LUNGU	F	ZIPULA	PETAUKE			
	LUTE ZULU	F	IVUTA	PETAUKE			
	ALADA ZULU	F	IVUTA	PETAUKE			
	ADALA MUMBA	F	IVUTA	PETAUKE			
	JUDITH ZULU	F	IVUTA	PETAUKE			

PETAUKE DISTRICT
ATTENDANCE LIST FOR THE PLUP
COMMUNITY MEETING

VENUE: DATE:

SNO.	NAME	GENDER (M/F)	VILLAGE/DESIGNATION	DISTRICT	CONTACT NO.	EMAIL ADDRESS	SIGNATURE
	MALISA MWANZA	F	IVUTA	PETAUKE			
	ZELIDA PHIRI	F	CHITENJE	PETAUKE			
	JUDITH TEMBO	F	GANDISAN	PETAUKE			
	SITELIA ZULU	F	IVUTA	PETAUKE			
	JENIPHA ZULU	F	IVUTA	PETAUKE			
	NGOZA MUMBA	F	IVUTA	PETAUKE			
	MWADABWA ZULU	F	IVUTA	PETAUKE			
	KES MWANZA	F	CHITENJE	PETAUKE			
	AIDA DAKA	F	NYAKUMWA	PETAUKE			
	JOICE PHIRI	F	ZIPULA	PETAUKE			
	MADALES SAKALA	F	CHITENJE	PETAUKE			
	BESNANT ZULU	F	NYANEMA	PETAUKE			
	LAVUNES TEMBO	F	NYANOKA	PETAUKE			
	AGINES DAKA	F	GINDIYONI	PETAUKE			
	MELI TEMBO	F	ZIPULU	PETAUKE			
	AFALIA MUMBA	F	ZIPULU	PETAUKE			
	MWAZIONA LUNGU	F	ZUMAN	PETAUKE			
	TINYA TEMBO	F	CHITENJE	PETAUKE			
	Catherine LUNGU	F	IVUTA	PETAUKE			
	GRACE SAKALA	F	GANDISAN	PETAUKE			
	FAIDESI SAKALA	F	GINDIYONI	PETAUKE			

**PETAUKE DISTRICT
ATTENDANCE LIST FOR THE PLUP
COMMUNITY MEETING**

VENUE: MATONJE DATE: 13/04/2022

SNO.	NAME	GENDER (M/F)	VILLAGE/DESIGNATION	DISTRICT	CONTACT NO.	EMAIL ADDRESS	SIGNATURE
1	Edina Phiri	F	Matonje	Petauke		Matonje	<i>[Signature]</i>
2	Felada Lungu	F	Nyanakuba	Petauke		Nyanakuba	
3	Tafwite Banda	F	Nyanza	Petauke		Nyanza	
4	Fainela Daka	F	Nyanakuba	Petauke		Nyanakuba	
5	Aivanda Banda	F	Nyanakuba	Petauke		Nyanakuba	
6	Lekesira Phiri	F	Kasongo	Petauke		Kasongo	
7	Falesi Kausa	F	Nyanakuba	Petauke		Kasongo	
8	Esneya Mumba	F	Kasongo	Petauke		Matonje	
9	Tisimbani Daka	F	Matonje	Petauke	097210555	Matonje	Banda
10	Evelosa Mumba	F	Matonje	Petauke		Nyanakuba	E. ZULU
11	Zalwa Banda	F	Nyanakuba	Petauke		Matonje	FRASANZA
12	Evelina Zulu	F	Matonje	Petauke		Matonje	
13	Evelasi Kasongo	F	Matonje	Petauke		Matonje	
14	Malesi Tembo	F	Matonje	Petauke		Matonje	
15	Getrudu Phiri	F	Matonje	Petauke		Matonje	F Banda
16	Judrey Tembo	F	Matonje	Petauke		Nyanza	
17	Florence Banda	F	Nyanza	Petauke		Nyanakuba	
18	Tione Zulu	F	Nyanakuba	Petauke		Nyanakuba	
19	Seneta Tembo	F	Nyanakuba	Petauke		Nyanza	
20	Charity Mumba	F	Nyanza	Petauke			
21	Nsamwa Tembo	F					

**PETAUKE DISTRICT
ATTENDANCE LIST FOR THE PLUP
COMMUNITY MEETING**

VENUE: MATONJE DATE: 13/04/2022

SNO.	NAME	GENDER (M/F)	VILLAGE/DESIGNATION	DISTRICT	CONTACT NO.	EMAIL ADDRESS	SIGNATURE
22	Alick Zulu	M	NYANKUBA	PETAUKE	097073191	NYANKUBA	Alick
23	FUNWULANI MWALE	M	MATONJE	PETAUKE	-	MATONJE	F Mumba
24	JOHN NGULUBE	M	NYANZA	PETAUKE	-	NYANZA	
25	NYANISIKU PHIRI	M	NYAMWAI	PETAUKE	0955925055	NYAMWAI	N Phiri
26	MICHAEL LUNLU	M	NYANKUBA	PETAUKE	-	NYANKUBA	
27	GEORGE MWAPE	M	NYAMWAI	PETAUKE	-	NYAMWAI	<i>[Signature]</i>
28	MUMBA MWANZA	M	MATONJE	PETAUKE	-	MATONJE	
29	MAMBO MUMBA	M	NYANZA	PETAUKE	0977185747	MATONJE	<i>[Signature]</i>
30	PETER TEMBO	M	MATONJE	PETAUKE	-	MATONJE	P. Tembo
31	ALICK MUMBA	M	NYANKUBA	PETAUKE	-	NYANKUBA	A Mumba
32	BRADON PHIRI	M	MATONJE	PETAUKE	0770607050	MATONJE	<i>[Signature]</i>
33	DAVID PHIRI	M	MATONJE	PETAUKE	0972284643	MATONJE	<i>[Signature]</i>
34	ELVIS TEMBO	M	MATONJE	PETAUKE	0762669450	MATONJE	<i>[Signature]</i>
35	IRACKSON TEMBO	M	KASONGO	PETAUKE	-	KASONGO	<i>[Signature]</i>
36	ANDWEL DAKA	M	NYAMWAI	PETAUKE	-	NYAMWAI	
37	FACKSON ZULU	M	MATONJE	PETAUKE	-	MATONJE	
38	DAVID PHIRI	M	NYAMWAI	PETAUKE	0976950854	NYAMWAI	D. Phiri
39	ABEL TEMBO	M	MATONJE	PETAUKE	095349539	MATONJE	<i>[Signature]</i>
40	NICOLA PAPER	M	KASONGO	PETAUKE	0974299011	KASONGO	<i>[Signature]</i>
41	KHEYSON TEMBO	M	MATONJE	PETAUKE	-	MATONJE	<i>[Signature]</i>
42	IWELL LUNLU	M	MATONJE	PETAUKE	0976980214	MATONJE	<i>[Signature]</i>

PETAUKE DISTRICT
ATTENDANCE LIST FOR THE PLUP
COMMUNITY MEETING

VENUE: MATONJE DATE: 13/04/2022

SNO.	NAME	GENDER (M/F)	VILLAGE/DESIGNATION	DISTRICT	CONTACT NO.	EMAIL ADDRESS	SIGNATURE
43	YOBE MUMBA	M	JULIUS KAMPENDE	PETAUKE	-	JULIUS K	<i>D. Mumba</i>
44	ALIFORD PHIRI	M	KASONGO	PETAUKE	-	KASONGO	<i>A. Phiri</i>
45	LIMBIKANI LUNGU	M	MATONJE	PETAUKE	-	MATONJE	<i>L. Lungu</i>
46	EMMANUEL TEMBO	M	NYANKUNWA	PETAUKE	-	NYANKUNWA	
47	MWANZA LUNGU	M	NYANKUNWA	PETAUKE	-	NYANKUNWA	
48	YOBE BANDA	M	MATONJE	PETAUKE	-	MATONJE	
49	RECHARD LUNGU	M	NYAMWAI	PETAUKE	-	NYAMWAI	<i>Lungu</i>
50	LEVISON TEMBO	M	NYANZA	PETAUKE	0976923066	NYANZA	<i>L. Tembo</i>
61	IWELL PHIRI	M	MATONJE	PETAUKE	0977481564	MATONJE	<i>I. Phiri</i>
62	LACTO PHIRI	M	MATONJE	PETAUKE	097406968	MATONJE	<i>L. Phiri</i>
63	GREVARYO TEMBO	M	MATONJE	PETAUKE	-	MATONJE	<i>G. MBO</i>
64	ZACHARIAH TEMBO	M	MATONJE	PETAUKE	0766671850	MATONJE	<i>M. Tembo</i>
65	MWANZA TEMBO	M	MATONJE	PETAUKE	077725506	MATONJE	<i>M. Tembo</i>
66	JOSEPH PHIRI	M	MATONJE	PETAUKE	077253361	MATONJE	<i>J. Phiri</i>
67	MSAHOPE PHIRI	M	MATONJE	PETAUKE	0974142879	MATONJE	<i>M. Phiri</i>
68	EAPHAS LUNGU	M	MATONJE	PETAUKE	076802940	MATONJE	<i>E. Lungu</i>
69	PETER PHIRI	M	MATONJE	PETAUKE	-	MATONJE	<i>P. Phiri</i>
70	ALICK NJOBVU	M	MATONJE	PETAUKE	-	MATONJE	<i>A. Njobvu</i>
71	YELEISANI BANDA	M	MATONJE	PETAUKE	0777137406	MATONJE	<i>Y. Banda</i>
72	BITWEL ALICK NJOBVU	M	MATONJE	PETAUKE	0979875168	MATONJE	<i>B. Njobvu</i>
73	SHEDA ZUKU	M	MATONJE	PETAUKE	-	MATONJE	

PETAUKE DISTRICT
ATTENDANCE LIST FOR THE PLUP
COMMUNITY MEETING

VENUE: MATONJE DATE: 13th APRIL 2022

SNO.	NAME	GENDER (M/F)	VILLAGE/DESIGNATION	DISTRICT	CONTACT NO.	EMAIL ADDRESS	SIGNATURE
74	TEMBO ALARGE	M	M'NYANZA	PETAUKE	0962275272	M'NYANZA	<i>M. Tembo</i>
75	Napulube James	M	JULIUS	PETAUKE	0954597532	JULIUS	<i>N. James</i>
76	AFRICA TEMBO	M	NYANKUNWA	PETAUKE	-	NYANKUNWA	
77	GEORGE LUNGU	M	KASONGO	PETAUKE	095596900	KASONGO	<i>G. Lungu</i>
78	BENSON BANDA	M	MATONJE	PETAUKE	-	MATONJE	<i>B. Banda</i>
79	AWARD MUMBA	M	NYANKUNWA	PETAUKE	-	NYANKUNWA	<i>A. Mumba</i>
80	BLACKSON TEMBO	M	NYANKUNWA	PETAUKE	-	NYANKUNWA	<i>B. Tembo</i>
81	FELLOW DAKA	M	NYANKUNWA	PETAUKE	-	NYANKUNWA	<i>F. Daka</i>
82	CHARLES S. SAKALA	M	JULIUS KAMPENDE	PETAUKE	-	J. KAMPENDE	<i>C. Sakala</i>
83	DOCTOR TEMBO	M	NYANKUNWA	PETAUKE	-	NYANKUNWA	<i>D. Tembo</i>
84	PETER PHIRI	M	KASANGA	PETAUKE	-	KASANGA	
85	PETER PHIRI	M	KASANGA	PETAUKE	-	KASANGA	
86	CHITAYE MUMBA	M	MATONJE	PETAUKE	-	MATONJE	<i>C. Mumba</i>
87	SAUKANI MWANZA	M	JOMBO NSALABVULI	PETAUKE	0965813444	JOMBO N	<i>S. Mwanza</i>
88	JASON TEMBO	M	KASANGA	PETAUKE	-	KASANGA	
89	MASALISO SAKALA	M	MATONJE	PETAUKE	0973625243	MATONJE	<i>M. Sakala</i>
89	LENGUEZANI PHIRI	M	MATONJE	PETAUKE	0764461759	MATONJE	<i>L. Phiri</i>
90	OBBY BANDA	M	KASONGO	PETAUKE	076864845	KASONGO	<i>O. Banda</i>
91	ISAAC CHIPANDA	M	MATONJE	PETAUKE	0970556505	MATONJE	<i>I. Chipanda</i>
92	JAILOS BANDA	M	MATONJE	PETAUKE	0978572809	MATONJE	<i>J. Banda</i>
93	YOTAM LUNGU	M	MATONJE	PETAUKE	076646363	MATONJE	<i>Y. Lungu</i>
94	JOHN PHIRI	M	MATONJE	PETAUKE	-	MATONJE	

**PETAUKE DISTRICT
ATTENDANCE LIST FOR THE PLUP
COMMUNITY MEETING**

VENUE: MATONJE DATE: 12-04-2022

SNO.	NAME	GENDER (M/F)	VILLAGE/DESIGNATION	DISTRICT	CONTACT NO.	EMAIL ADDRESS	SIGNATURE
			Matonje	Petauke		Matonje	
95	Helen Mwanza	F	Matonje	Petauke		Matonje	
96	Tamata Lungu	F	Matonje	Petauke		Matonje	
97	Miriam Mbwazi	F	Matonje	Petauke		Matonje	
98	Grace Lungu	F	Nyanza	Petauke		Nyanza	
99	Florence Tembo	F	Matonje	Petauke		Matonje	
100	Agness Lungu	F	Nyanzuba	Petauke		Nyanzuba	
101	Stella Sakala	F	Jombo Misatavuli	Petauke		Jombo Misatavuli	
102	Alice Phiri	F	Nyanza	Petauke		Nyanza	
103	Lebetina Tembo	F	Nyanza	Petauke		Nyanzuba	
104	Marianka Dalica	F	Nyanzuba	Petauke		Nyanzuba	
105	Kaluba Banda	F	Nyanza	Petauke		Nyanzuba	
106	Cathleen Mwanza	F	Nyanzuba	Petauke		Nyanzuba	
107	Cathleen Phiri	F	Nyanzuba	Petauke		Nyanzuba	
108	Agness Tembo	F	Nyanzuba	Petauke		Nyanzuba	
109	Agness Tembo	F	Nyanzuba	Petauke		Nyanzuba	
110	Eneles Phiri	F	Nyanza	Petauke		Matonje	
111	Violet Banda	F	Matonje	Petauke		Matonje	
112	Lizzy Phiri	F	Matonje	Petauke		Matonje	
113	Lidiab Mwanza	F	Matonje	Petauke		Nyanzuba	
114	Stella Zulu	F	Nyanzuba	Petauke			
115	Donalia Lungu	F					

**PETAUKE DISTRICT
ATTENDANCE LIST FOR THE PLUP
COMMUNITY MEETING**

VENUE: MATONJE DATE: 12/04/2022

SNO.	NAME	GENDER (M/F)	VILLAGE/DESIGNATION	DISTRICT	CONTACT NO.	EMAIL ADDRESS	SIGNATURE
			Matonje	Petauke		Matonje	
116	Selina Tembo	F	Matonje	Petauke		Matonje	
117	Balita Mwanza	F	Matonje	Petauke		Matonje	
118	Baty Mwanza	F	Matonje	Petauke		Matonje	
119	Margret Mwanza	F	Matonje	Petauke		Matonje	
120	Beatrice Phiri	F	Matonje	Petauke		Matonje	
121	Maria Tembo	F	Matonje	Petauke		Matonje	
122	Nsamwa Tembo	F	Matonje	Petauke		Matonje	
123	Ester Lungu	F	Matonje	Petauke		Matonje	
124	Kaluba Phiri	F	Matonje	Petauke		Matonje	
125	Chiona Lungu	F	Matonje	Petauke		Matonje	
126	Faneli Tembo	F	Matonje	Petauke		Matonje	
127	Charity Phiri	F	Matonje	Petauke		Matonje	
128	Fales Mwanza	F	Matonje	Petauke		Matonje	
129	Rebecca Phiri	F	Matonje	Petauke		Matonje	
130	Phelby Sakala	F	Matonje	Petauke		Matonje	
131	Maketa Nyanzuba	F	Matonje	Petauke		Kasongo	
132	Faneli Tembo	F	Kasongo	Petauke		Kasongo	
133	Silvia Nyanzuba	F	Kasongo	Petauke		Kasongo	
134	Evinya Tembo	F	Kasongo	Petauke			
135	Laximary Phiri	F					

**PETAUKE DISTRICT
ATTENDANCE LIST FOR THE PLUP
COMMUNITY MEETING**

VENUE: MATONJE DATE: 13/04/2022

SNO.	NAME	GENDER (M/F)	VILLAGE/DESIGNATION	DISTRICT	CONTACT NO.	EMAIL ADDRESS	SIGNATURE
135	At+Lodi Mumbwa	F	Nyanakuba	Petauke		Nyanakuba	
137	Susan Yuku	F	Nyanakuba	Petauke		Nyanakuba	
138	Mary Tembo	F	Nyanakuba	Petauke		Nyanakuba	
139	Mary Sallala	F	Nyanakuba	Petauke		Nyanakuba	
140	Mary Tembo	F	Nyanza	Petauke		Nyanza	
141	Ester Phiri	F	Nyanza	Petauke		Nyanza	
142	Doroth Phiri	F	Matonse	Petauke		Matonse	
143	Edina Tembo	F	Matonse	Petauke		Matonse	
144	Morine Tembo	F	Matonse	Petauke		Matonse	
145	Enala Tembo	F	Matonse	Petauke		Matonse	
146	Viola Phiri	F	Matonse	Petauke		Matonse	
147	Emelia Tembo	F	Nyamwai	Petauke		Nyamwai	
148	Blessings Phiri	F	Nyanakuba	Petauke		Nyanakuba	
149	Sabata Lungu	F	Matonse	Petauke		Nyamwai	
150	Grace Phiri	F	Nyamwai	Petauke		Matonse	
151	Mable Tembo	F	Matonse	Petauke		Matonse	
152	Sustina Tembo	F	Matonse	Petauke		Matonse	
153	Ferdous Phiri	F	Matonse	Petauke		Matonse	
154	Mwape Phiri	F	Matonse	Petauke		Matonse	
155	Agness Muzanda	F	Matonse	Petauke		Matonse	
156	Miriam Muzanda	F	Matonse	Petauke		Matonse	

**PETAUKE DISTRICT
ATTENDANCE LIST FOR THE PLUP
COMMUNITY MEETING**

VENUE: DATE:

SNO.	NAME	GENDER (M/F)	VILLAGE/DESIGNATION	DISTRICT	CONTACT NO.	EMAIL ADDRESS	SIGNATURE
157	JEDASON PHIRI	M	MATONJE	PETAUKE	-	MATONJE	
158	JOHN TEMBO Z	M	MATONJE	PETAUKE	097237944	MATONJE	PZ
159	RECHARD TEMBO	M	MATONJE	PETAUKE	097235072	MATONJE	Tembo
160	IRACK PHIRI	M	MATONJE	PETAUKE	-	MATONJE	
161	SMART TEMBO	M	MATONJE NYAMWAI	PETAUKE	-	NYAMWAI	
162	JULIUS MBEWE	M	NYANKUNYA	PETAUKE	-	NYANKUNYA	
163	CHRISPWE TEMBO	M	NYANKUNYA	PETAUKE	-	NYANKUNYA	
64							

Validation Meetings

PETAUKE DISTRICT
ATTENDANCE LIST FOR THE PLUP
COMMUNITY MEETING

VENUE: MASHAWIC DATE: 20/6/2022

SNO.	NAME	GENDER (M/F)	POSITION - VILLAGE	WARD	CONTACT NO.	EMAIL ADDRESS	SIGNATURE
43	Richard Daka	M	Mankungwe	Mankungwe			
44	Leleti Lutho	M	Mankungwe	"			
45	Fackson Temb	M	Mankungwe	"			
46	Thato Mumba	M	Mankungwe	"			
47	Lawrence Daka	M	Mankungwe	"	0955230454		
48	Leon Gony Maseusa	M	Mankungwe	"	0950196285		
49	Doronic MBEWE	M	Mankungwe	"	0766691716		
50	Jesus Mwanza	M	Mankungwe	"	0982167987		
51	Richard Mwanza	"	"	"			
52	Santos Temb	"	"	"			
53	Mato Temb	"	"	"			
54	Mulisa Banda	"	"	"			
55	FRANCIS MBEWE	"	"	"			
56	Thomas phiri	"	"	"			
57	Richard Daka	"	"	"			T phiri
58	Blackson Temb	"	"	"			
59	Jabul Banda	"	"	"			
60	CARLOS Temb	"	"	"	0956245521		J.G. Mankungwe
61	Thabizwa Temb	"	"	"			
62	TELEPHIA Temb	"	"	"			
63	WELAZAN Temb	"	"	"	077675075		T Temb

PETAUKE DISTRICT
ATTENDANCE LIST FOR THE PLUP
COMMUNITY MEETING

VENUE: MASHAWIC DATE: 20/6/2022

SNO.	NAME	GENDER (M/F)	POSITION - VILLAGE	WARD	CONTACT NO.	EMAIL ADDRESS	SIGNATURE
1	Rosi Mumba	F	Mankungwe	Mankungwe			
2	Gibson Sakala	M	Mankungwe	Mankungwe			
3	Anita Banda	F	Mankungwe	Mankungwe			
4	Grace Mwanza	F	Mankungwe	Mankungwe			
5	Grace phiri	F	Mankungwe	Mankungwe			
6	Eliza Sakala	F	Mankungwe	Mankungwe			
7	Chiluba Mwanza	F	Mankungwe	Mankungwe			
8	Jivhaleyi Daka	F	Mankungwe	Mankungwe			
9	Alice Sakala	F	Mankungwe	Mankungwe			
10	Charity Daka	F	Mankungwe	Mankungwe			
11	Judith phiri	F	Mankungwe	Mankungwe			
12	Fales phiri	F	Mankungwe	Mankungwe			
13	Aines Sakala	F	Mankungwe	Mankungwe			
14	Magnet Temb	F	Mankungwe	Mankungwe			
15	Zedra Sakala	F	Mankungwe	Mankungwe			
16	Esingwa Daka	F	Mankungwe	Mankungwe			
17	Mavis Temb	F	Mankungwe	Mankungwe			
18	Nast Daka	F	Mankungwe	Mankungwe			
19	Velesige Mumba	F	Mankungwe	Mankungwe			
20	Esther Daka	F	Mankungwe	Mankungwe			
21	Esther Mwanza	F	Mankungwe	Mankungwe			

PETAUKE DISTRICT
ATTENDANCE LIST FOR THE PLUP
COMMUNITY MEETING

VENUE: Mankungwe

DATE: 20/06/2022

SNO.	NAME	GENDER (M/F)	POSITION	WARD	CONTACT NO.	EMAIL ADDRESS	SIGNATURE
64	Selicia phiri	F	Mankungwe	Mankungwe			
65	Julia Mwanza	F	Julias	Mankungwe			
66	Faith Tembo	F	Mankungwe	Mankungwe			
67	Agness Tembo	F	Mankungwe	Mankungwe	09722753		
68	Esther ngulube	F	Julias	Mankungwe	096360111		
69	Chisheche ngulube	F	Julias	Mankungwe			
70	Lucy kungu	F	Mankungwe	Mankungwe			
71	Margret Saka	F	Mankungwe	Mankungwe			
72	Grace tembo	F	Mankungwe	Mankungwe			
73	Elizabeth Tembo	F	Mankungwe	Mankungwe			
74	Eliza mwanza	F	Julias	Mankungwe			
75	Teresa Tembo	F	Mankungwe	Mankungwe			
76	Esther baka	F	Mankungwe	Mankungwe			
77	Chiluba mumba	F	Mankungwe	Mankungwe			
78	Libiana Tembo	F	Mankungwe	Mankungwe			
79	Margaret mumba	F	Mankungwe	Mankungwe			
80	Akiline Saka	F	Mankungwe	Mankungwe			
81	Esther mumba	F	Mankungwe	Mankungwe			
82	Catherine mumba	F	Mankungwe	Mankungwe			
83	Ngoni phiri	F	Mankungwe	Mankungwe			
84	Esther Tembo	F	Mankungwe	Mankungwe			

PETAUKE DISTRICT
ATTENDANCE LIST FOR THE PLUP
COMMUNITY MEETING

VENUE: Mankungwe

DATE: 20/06/22

SNO.	NAME	GENDER (M/F)	POSITION	WARD	CONTACT NO.	EMAIL ADDRESS	SIGNATURE
86	Phelista Dika	F	Mankungwe	Mankungwe	095518183		
87	Konjwase Mwanza	F	Mankungwe	Mankungwe			
88	Sofia Tembo	F	Mankungwe	Mankungwe	095624436		
89	Elizabeth phiri	F	Mankungwe	Mankungwe			
90	Memory Mwanza	F	Mankungwe	Mankungwe			
91	Victoria phiri	F	Mankungwe	Mankungwe			
92	Uwulanyi Xulu	F	Mankungwe	Mankungwe			
93	Christy Saka	F	Mankungwe	Mankungwe			
94	Veronica Mwanza	F	Julias	Mankungwe			
95	Harriet Mwanza	F	Mankungwe	Mankungwe			
96	Martina Mumba	F	Mankungwe	Mankungwe	0933800995		
97	Ames Saka	F	Mankungwe	Mankungwe			
98	Esther Tembo	F	Julias	Mankungwe			

PETAUKE DISTRICT
ATTENDANCE LIST FOR THE PLUP
COMMUNITY MEETING

VENUE: Mantungwe

DATE: 20/05/22

SNO.	NAME	GENDER (M/F)	POSITION	WARD	CONTACT NO.	EMAIL ADDRESS	SIGNATURE
22	Samicha Mwanza	F	JULIUS	Mantungwe			
23	Mari Mumba	F	Mantungwe	Mantungwe	0972604487		
24	Edigwira Mumba	F	JULIUS	Mantungwe			
25	Mavis Lungu	F	Mantungwe	Mantungwe	0933495015		
26	Mary SAKALA	F	Mantungwe	Mantungwe			
27	Esther SAKALA	F	Mantungwe	Mantungwe			
28	Esther SAKALA	F	Mantungwe	Mantungwe			
29	Agnes DALO	F	Mantungwe	Mantungwe			
30	Miriam DALO	F	Mantungwe	Mantungwe			
31	Joseph Mwanza	F	Mantungwe	Mantungwe			
32	Christina DALO	F	Mantungwe	Mantungwe			
33	Xyora Mumba	F	Mantungwe	Mantungwe			
34	Xyora DALO	F	Mantungwe	Mantungwe	0966604278		
35	Magazie Lungu	F	Mantungwe	Mantungwe			
36	Felice Lungu	F	JULIA	Mantungwe			
37	Rute Tembo	F	Mantungwe	Mantungwe			
38	Magret SAKALA	F	Mantungwe	Mantungwe			
39	Mwata Lungu	F	Mantungwe	Mantungwe	0956339446		
40	Sasa SAKALA	F	Mantungwe	Mantungwe			
41	Arico phiri	F	JULIA	Mantungwe			
42	Tasira Mumba	F	Mantungwe	Mantungwe			

PETAUKE DISTRICT
ATTENDANCE LIST FOR THE PLUP
COMMUNITY MEETING

VENUE: Mantungwe

DATE: 20/05/22

SNO.	NAME	GENDER (M/F)	POSITION	WARD	CONTACT NO.	EMAIL ADDRESS	SIGNATURE
99	Dalo AFALE	F	KALINDE	Mantungwe			
100	Tisauke Tembo	"	AGULAM	"			
101	Yolanda Mwanza	"	JULIUS	"			
102	SABINE Tembo	"	Mantungwe	"			
103	Tole Lungu	M	Mantungwe	"	0955552288		
104	Dela Usiku	M	"	"			
105	STEVEN TEMBO	M	JULIUS	"	0953357437		
106	KAMPALO SAKALA	M	Mantungwe	"	0770562316		
107	TEMBO ELWE	F	"	"			

PETAUKE DISTRICT
ATTENDANCE LIST FOR THE PLUP
COMMUNITY MEETING

VENUE: SANJANA (MATHA VILLAGE) DATE: 21/06/2022

SNO.	NAME	GENDER (M/F)	VILLAGE / POSITION	WARD	CONTACT NO.	EMAIL ADDRESS	SIGNATURE
1	SEKELANI LUNGU	MA	MAALONA	MANYANE			
2	MASILE LUNGU	MA	MAALONA	MANYANE	07746791	07746791	
3	WILSON PHIRI	MA	MALIMA	MANYANE	077555017		
4	PAIRICK TEMBO	MA	MALIMA	MANYANE	098839307		
5	MASONJA MAZOWE	M	MALIMA	MANYANE	097773470		
6	MWELWA NGULUBO	MA	MAALONA	MANYANE	077730008		
7	MANKON MAMAZA	MA	MAALONA	MANYANE	0977912009		
8	MOMBE MAMAZA	MA	MAALONA	MANYANE	0977773211		
9	MAMAZA R. PHIRI	MA	MAALONA	MANYANE			
10	SHADROCK SAKAHA	MA	MAALONA	MANYANE	097723216		
11	STEPHEN MAMAZA	MA	MAALONA	MANYANE	077730072		
12	AZOLE LUNGU	M	MAALONA	MANYANE			
13	JAMES PHIRI	MA	MAALONA	MANYANE	077759164		
14	STEPHEN PHIRI	MA	MAALONA	MANYANE	0774207652		
15	EDWIN MAMAZA	MA	MAALONA	MANYANE			
16	LOVENMORE LUNGU	MA	MAALONA	MANYANE	0972565444		
17	ANGRONI MAMAZA	M	MAALONA	MANYANE	0977909407		
18	MWELWA NGULUBO	M	MAALONA	MANYANE			

PETAUKE DISTRICT
ATTENDANCE LIST FOR THE PLUP
COMMUNITY MEETING

VENUE: CHIZANDA DATE: 21/06/2022

SNO.	NAME	GENDER (M/F)	VILLAGE / POSITION	WARD	CONTACT NO.	EMAIL ADDRESS	SIGNATURE
18	CAPHAS PHIRI	MA	ZUMANI	MANYANI	0974415700		
19	ACKSON ZULU	MA	ZUMANI	MANYANI	0970845013		
20	SHUTAS ZULU	MA	ZUMANI	MANYANI	0977833877		
21	IBACK TEMBO	MA	NYAROKA	MANYANI	0966033480		
22	SYVOSTER ZULU	MA	CHANDISANI	LI			
23	WOSTON LUNGU	MA	CHANDISANI	LI	0977231355	0972301350	
24	BLACKWELL TEMBO	MA	CHANDISANI	LI			
25	LOROWUTH PHIRI	MA	CHANDISANI	LI			
26	ADDISON MAMAZA	MA	CHANDISANI	LI			
27	BASTEN SAKAHA	MA	CHANDISANI	LI	0950456011		
28	RICHARD ZULU	MA	ZUMANI	LI			
29	ITUS TEMBO	MA	MAMAZA	LI			
30	FRED ZULU	MA	CHANDISANI	LI	0952678284		
31	MAMAZA MAMAZA	MA	CHANDISANI	LI			
32	GABIZANI TEMBO	MA	ZUMANI	LI	0979282881		
33	MAMAZA TEMBO	MA	ZUMANI	LI	0961528719		

PETAUKE DISTRICT
ATTENDANCE LIST FOR THE PLUP
COMMUNITY MEETING

VENUE: Chirawa DATE: 21/06/22

SNO.	NAME	GENDER (M/F)	VILLAGE / POSITION	WARD	CONTACT NO.	EMAIL ADDRESS	SIGNATURE
1	Itobaredi Phiri	F	Gideoni	Manyane			
2	Magrabe Daka	F	Chintende	Manyane			
3	Grace Mumba	F	Chintende	Manyane			
4	Mary Mumba	F	Chintende	Manyane			
5	Fahness Mumba	F	Chintende	Manyane			
6	Fanas Mumba	F	Chintende	Manyane			
7	Ateledi Sakala	F	Zumani	Manyane			
8	Arlesi Banda	F	Zumani	Manyane			
9	Enalesi Mumba	F	Chintende	Manyane	0950390401		
10	Monica Phiri	F	Chintende	Manyane			E. Mumba
11	Leyase Daka	F	Chintende	Manyane			M Phiri
12	Takwe Daka	F	Chintende	Manyane			Z Daka
13	Idath Daka	F	Muzungu	Manyane	0955230908		
14	Idadi Temb	F	Nyikumwa	Manyane			I Temb
15	Annali Mumba	F	Chintende	Manyane	0953352953		
16	Ngawa Daka	F	Zumani	Manyane			
17	Eling Daka	F	Ivuta	Manyane			
			Gandisani	Manyane	0953808477		

2
Manyane Ward

PETAUKE DISTRICT
ATTENDANCE LIST FOR THE PLUP
COMMUNITY MEETING

Validation and
Joining

VENUE: SANJAMA DATE: 21/06/2022

SNO.	NAME	GENDER (M/F)	VILLAGE / POSITION	WARD	CONTACT NO.	EMAIL ADDRESS	SIGNATURE
19	Forence Mumba	F	Malinga	Manyane	0957639160		
20	Fahness Mumba	F	Malinga	Manyane			
21	Anna Mumba	F	Monga	Manyane	0779528799		
22	Faisala Daka	F	Mutha	Manyane			
23	Zeliza Daka	F	Kabani, Kg	Manyane			
24	Avelina Temb	F	Malinga	Manyane			
25	Bernat Daka	F	Malinga	Manyane			
26	Anastacia Temb	F	Malinga	Manyane	0770764438		
27	Misoti Sakala	F	Monga	Manyane			
28	Anastacia Temb	F	Malinga	Manyane	077048827		
29	Rosmary Temb	F	Malinga	Manyane			
30	Ruth Mumba	F	Malinga	Manyane			
31	Edith Phiri	F	Malinga	Manyane	0976797945		E Phiri
32	Ester Sakala	F	Malinga	Manyane			
33	Adalesi Phiri	F	Monga	Manyane	0974657009		
34	Ileria Lungu	F	Malinga	Manyane	0970713469	F. Lungu	T. Lungu
35	Ineneresi Phiri	F	Malinga	Manyane			
36	Falesi Mumba	F	Malinga	Manyane			
37	Monga Mamba Zulu	M	Headman / Monga	Manyane	0770886995		

PETAUKE DISTRICT
ATTENDANCE LIST FOR THE PLUP
COMMUNITY MEETING

Validation and
Joining

Manoyane Ward

VENUE: Matonje DATE:

SNO.	NAME	GENDER (M/F)	VILLAGE / POSITION	WARD	CONTACT NO.	EMAIL ADDRESS	SIGNATURE
50	SHADRACK ZULU	M	NYAKULWA	MANYANE	0979875168		S. ZULU
51	WILSON BANJA	M	MATONJE	MANYANE	0974366889		W.C.
52	CHRIS YAMBANI	M	MATONJE	MANYANE	0977923573		Chris
53	SUKANI MURALE	M	MATONJE/INDUNA	"	-		S. M
54	AGGON LUKU	M	IBUNDO ASALA KULI	"	-		A. L
55	MALDENI DAKA	M	JULIUS	"	0971860092		M. D
56	BEST K PHIRI	M	MATONJE	"	0979455534		B. P
57	LEONARD PHIRI	M	"	"	0976505076		L. P
58	CHRISTOPHER BANDA	M	CHIKHOKHOKHE	"	-		C. B

PETAUKE DISTRICT
ATTENDANCE LIST FOR THE PLUP
COMMUNITY MEETING

Validation & Joining

Manoyane Ward

VENUE: MANOYE COMMUNITY DATE:

SNO.	NAME	GENDER (M/F)	VILLAGE / POSITION	WARD	CONTACT NO.	EMAIL ADDRESS	SIGNATURE
29	FACKSON ZULU	M	MATONJE	MANYANE			F. ZULU
30	CATHY BANS PHIRI	F	NYANANAYE	MANYANE	0950387182		C. P
31	FELEW DAKA	M	NYANKULWA	MANYANE			F. DAKA
32	LINDIKANI LUKU	M	MATONJE	MANYANE			L. LUKU
33	PAPUR NGOMU	M	CHIBALE	MANYANE	0974399111		P. N
34	ASTAK PHIRI	M	MATONJE	MANYANE			A. P
35	ROSEFARE LUKU	M	MATONJE	MANYANE	0975323246		R. L
36	LENGIZANI PHIRI	M	MATONJE	MANYANE	0973625243		L. P
37	ABEL TEMBO	M	MATONJE	MANYANE	0953249939		A. T
38	ISAAC NGOMU	M	KASONGO B	MANYANE	0977178114		I. N
39	SAMSON BANDA	M	MATONJE B	MANYANE	0976478050		S. B
40	BRASHO TONDO	M	MATONJE	"	0971501149		B. T
41	ELIASANI DAKA	M	MATONJE	"	"		E. D
42	PETER TONDO	M	MATONJE	"	0960214649		P. T
43	MWAKOPE PHIRI	M	MATONJE	"	0974142874		M. P
44	MAYFORD TEMBO	M	JULIUS	"	"		M. T
45	NSANGU LUKU	M	MATONJE	MANYANE	0974455659		N. L
46	THOMAS M. AMANDA	M	NYANZA	MANYANE	0973185367		T. A
47	JAYDI TEMBO	M	IBUNDO	MANYANE	0973653578		J. T
48	DICKINSON TEMBO	M	MATONJE	MANYANE	-		D. T
49	PACKSON BANDA	M	NYANZA	MANYANE	09972174665		P. B

Mangane Ward

PETAUKE DISTRICT
ATTENDANCE LIST FOR THE PLUP
COMMUNITY MEETING

Validation and
Signing

VENUE: MATONJE

DATE: 21/06/2022

SNO.	NAME	GENDER (M/F)	VILLAGE / POSITION	WARD	CONTACT NO.	EMAIL ADDRESS	SIGNATURE
22	Magrate Zulu	F	Kalanga	Mangane	-	-	-
23	Helen Mwanza	F	Kalanga	Mangane	0965599808	-	-
24	Grace Makoma	F	Matonje	Mangane	-	-	-
25	Grace Lungu	F	Matonje	Mangane	-	-	-
26	Mary Lungu	F	Matonje	Mangane	-	-	-
27	Adina Temb	F	Matonje	Mangane	0953390568	-	-
28	Emelis Mwanza	F	Matonje	Mangane	-	-	Ephiri

3

Mangane Ward

PETAUKE DISTRICT
ATTENDANCE LIST FOR THE PLUP
COMMUNITY MEETING

Validation and
Signing

VENUE: MATONJE

DATE: 21/06/2022

SNO.	NAME	GENDER (M/F)	VILLAGE / POSITION	WARD	CONTACT NO.	EMAIL ADDRESS	SIGNATURE
1	Mazana Mabwe	F	Matonje	Mangane	-	-	-
2	Fada Bada	F	Matonje	Mangane	-	-	M. Njorwe
3	Chiona Mwanza	F	Matonje	Mangane	-	-	-
4	Elizabeth Phiri	F	Matonje	Mangane	-	-	-
5	Catherine Chiswa	F	Matonje	Mangane	-	-	-
6	Falesi Kausa	F	Kasungu	Mangane	-	-	-
7	Amusalepa Temb	F	Chisale	Mangane	-	-	-
8	Anna Temb	F	Matonje	Mangane	-	-	-
9	Etheloni Mumba	F	Matonje	Mangane	-	-	-
10	Ernest Lungu	F	Matonje	Mangane	-	-	-
11	Loveress Daka	F	Matonje	Mangane	-	-	-
12	Cecilia Temb	F	Julius Kampanjo	Mangane	0976289140	-	-
13	Lucia Temb	F	Kalanga	Mangane	-	-	C. Temb
14	Actinia Mumba	F	Kalanga	Mangane	-	-	-
15	Feday Sakala	F	Matonje	Mangane	-	-	-
16	Justina Temb	F	Julius Kampanjo	Mangane	-	-	-
17	Rosemary Phiri	F	Kasungu	Mangane	-	-	-
18	Rosta Phiri	F	Matonje	Mangane	-	-	-
19	Mary Phiri	F	Matonje	Mangane	-	-	-
20	Manath Mabwe	F	Jombo Salgwali	Mangane	-	-	-
21	Fada Phiri	F	Matonje	Mangane	-	-	-